



KEPUTUSAN
MENTERI KELAUTAN DAN PERIKANAN REPUBLIK INDONESIA
NOMOR 79/KEPMEN-KP/2020
TENTANG
KAWASAN KONSERVASI PESISIR DAN PULAU-PULAU KECIL TELUK BERAU
DAN TELUK NUSALASI-VAN DEN BOSCH DI PROVINSI PAPUA BARAT

DENGAN RAHMAT TUHAN YANG MAHA ESA

MENTERI KELAUTAN DAN PERIKANAN REPUBLIK INDONESIA,

- Menimbang : a. bahwa dalam rangka melindungi, melestarikan, dan memanfaatkan wilayah pesisir dan pulau-pulau kecil Teluk Berau dan Teluk Nusalasi-Van Den Bosch di Provinsi Papua Barat yang memiliki potensi perikanan dan adanya habitat penting seperti terumbu karang, lamun, mangrove, tempat pemijahan/peneluran penyu dan ikan terbang, spesies dilindungi seperti pari manta, hiu, serta keanekaragaman jenis ikan karang, maka perlu dilakukan perlindungan terhadap pesisir dan pulau-pulau kecil Teluk Berau dan Teluk Nusalasi-Van Den Bosch di Provinsi Papua Barat;
- b. bahwa pesisir dan pulau-pulau kecil Teluk Berau dan Teluk Nusalasi-Van Den Bosch di Provinsi Papua Barat memiliki keunikan fenomena alam dan/atau keunikan budaya lokal yang alami dan berdaya tarik tinggi serta berpeluang besar untuk menunjang pengembangan

wisata pesisir dan pulau-pulau kecil yang berkelanjutan;

- c. bahwa berdasarkan pertimbangan sebagaimana dimaksud dalam huruf a dan huruf b, serta dalam rangka melaksanakan ketentuan Pasal 28 ayat (2) Undang-Undang Nomor 27 Tahun 2007 tentang Pengelolaan Wilayah Pesisir dan Pulau-Pulau Kecil, sebagaimana telah diubah dengan Undang-Undang Nomor 1 Tahun 2014 tentang Perubahan atas Undang-Undang Nomor 27 Tahun 2007 tentang Pengelolaan Wilayah Pesisir dan Pulau-Pulau Kecil, perlu menetapkan Keputusan Menteri Kelautan dan Perikanan tentang Kawasan Konservasi Pesisir dan Pulau-Pulau Kecil Teluk Berau dan Teluk Nusalasi-Van Den Bosch di Provinsi Papua Barat;

- Mengingat :
1. Undang-Undang Nomor 27 Tahun 2007 tentang Pengelolaan Wilayah Pesisir dan Pulau-Pulau Kecil (Lembaran Negara Republik Indonesia Tahun 2007 Nomor 84, Tambahan Lembaran Negara Republik Indonesia Nomor 4739), sebagaimana telah diubah dengan Undang-Undang Nomor 1 Tahun 2014 tentang Perubahan atas Undang-Undang Nomor 27 Tahun 2007 tentang Pengelolaan Wilayah Pesisir dan Pulau-Pulau Kecil (Lembaran Negara Republik Indonesia Tahun 2014 Nomor 2, Tambahan Lembaran Negara Republik Indonesia Nomor 5490);
 2. Peraturan Presiden Nomor 63 Tahun 2015 tentang Kementerian Kelautan dan Perikanan (Lembaran Negara Republik Indonesia Tahun 2015 Nomor 111), sebagaimana telah diubah dengan Peraturan Presiden Nomor 2 Tahun 2017 tentang Perubahan atas Peraturan Presiden Nomor 63 Tahun 2015 tentang Kementerian Kelautan dan Perikanan (Lembaran Negara Republik Indonesia Tahun 2017 Nomor 5);

3. Peraturan Presiden Nomor 68 Tahun 2019 tentang Organisasi Kementerian Negara (Lembaran Negara Republik Indonesia Tahun 2019 Nomor 203);
4. Peraturan Menteri Kelautan dan Perikanan Nomor PER.17/MEN/2008 tentang Kawasan Konservasi di Wilayah Pesisir dan Pulau-Pulau Kecil;
5. Peraturan Menteri Kelautan dan Perikanan Nomor 6/PERMEN-KP/2017 tentang Organisasi dan Tata Kerja Kementerian Kelautan dan Perikanan (Berita Negara Republik Indonesia Tahun 2017 Nomor 220), sebagaimana telah diubah dengan Peraturan Menteri Kelautan dan Perikanan Nomor 7/PERMEN-KP/2018 tentang Perubahan atas Peraturan Menteri Kelautan dan Perikanan Nomor 6/PERMEN-KP/2017 tentang Organisasi dan Tata Kerja Kementerian Kelautan dan Perikanan (Berita Negara Republik Indonesia Tahun 2018 Nomor 317);

MEMUTUSKAN:

- Menetapkan : KEPUTUSAN MENTERI KELAUTAN DAN PERIKANAN TENTANG KAWASAN KONSERVASI PESISIR DAN PULAU-PULAU KECIL TELUK BERAU DAN TELUK NUSALASI-VAN DEN BOSCH DI PROVINSI PAPUA BARAT.
- KESATU : Menetapkan pesisir dan pulau-pulau kecil Teluk Berau dan Teluk Nusalasi-Van Den Bosch sebagai Kawasan Konservasi Pesisir dan Pulau-Pulau Kecil Teluk Berau dan Teluk Nusalasi-Van Den Bosch di Provinsi Papua Barat.
- KEDUA : Kawasan Konservasi Pesisir dan Pulau-Pulau Kecil Teluk Berau dan Teluk Nusalasi-Van Den Bosch di Provinsi Papua Barat sebagaimana dimaksud diktum KESATU dikelola sebagai Taman Pesisir Teluk Berau dan Teluk Nusalasi-Van Den Bosch di Provinsi Papua Barat.
- KETIGA : Taman Pesisir Teluk Berau dan Teluk Nusalasi-Van Den Bosch di Provinsi Papua Barat sebagaimana dimaksud diktum KEDUA dengan luas keseluruhan 346.807,87 (tiga

ratus empat puluh enam ribu delapan ratus tujuh koma delapan tujuh) Hektare yang meliputi:

a. Area I

Teluk Berau dengan luas 7.804,43 (tujuh ribu delapan ratus empat koma empat tiga) Hektare, yang meliputi:

1. zona inti dengan luas 322,27 (tiga ratus dua puluh dua koma dua tujuh) Hektare;
2. zona pemanfaatan terbatas dengan luas 7.482,16 (tujuh ribu empat ratus delapan puluh dua koma satu enam) Hektare, yang meliputi:
 - a) subzona perikanan tradisional dengan luas 7.265,79 (tujuh ribu dua ratus enam puluh lima koma tujuh sembilan) Hektare;
 - b) subzona perlindungan danau air asin dengan luas 22,94 (dua puluh dua koma sembilan empat) Hektare; dan
 - c) subzona perlindungan pulau kecil dengan luas 193,43 (seratus sembilan puluh tiga koma empat tiga) Hektare.

b. Area II

Teluk Berau dengan luas 74.050,86 (tujuh puluh empat ribu lima puluh koma delapan enam) Hektare, yang meliputi:

1. zona inti dengan luas 27,87 (dua puluh tujuh koma delapan tujuh) Hektare;
2. zona pemanfaatan terbatas dengan luas 71.841,42 (tujuh puluh satu ribu delapan ratus empat puluh satu koma empat dua) Hektare, yang meliputi:
 - a) subzona wisata dengan luas 8.104,20 (delapan ribu seratus empat koma dua nol) Hektare;
 - b) subzona perikanan tradisional dengan luas 63.489,53 (enam puluh tiga ribu empat ratus delapan puluh sembilan koma lima tiga) Hektare;
 - c) subzona perlindungan danau air asin dengan luas 0,51 (nol koma lima satu) Hektare;

d) subzona perlindungan pulau kecil dengan luas 247,18 (dua ratus empat puluh tujuh koma satu delapan) Hektare; dan

3. zona lainnya berupa subzona kerakera dengan luas 2.181,57 (dua ribu seratus delapan puluh satu koma lima tujuh) Hektare.

c. Area III

Teluk Berau berupa zona pemanfaatan terbatas dengan luas 17.088,51 (tujuh belas ribu delapan puluh delapan koma lima satu) Hektare, yang meliputi:

1. subzona wisata dengan luas 1.516,41 (seribu lima ratus enam belas koma empat satu) Hektare; dan

2. subzona perikanan tradisional dengan luas 15.561,36 (lima belas ribu lima ratus enam puluh satu koma tiga enam) Hektare.

3. subzona perlindungan danau air asin dengan luas 2,49 (dua koma empat sembilan) Hektare; dan

4. subzona perlindungan pulau kecil dengan luas 8,25 (delapan koma dua lima) Hektare.

d. Area IV

Teluk Nusalasi-Van Den Bosh dengan luas 247.864,07 (dua ratus empat puluh tujuh ribu delapan ratus enam puluh empat koma nol tujuh) Hektare, yang meliputi:

1. zona inti dengan luas 29.679,77 (dua puluh sembilan ribu enam ratus tujuh puluh sembilan koma tujuh tujuh) Hektare;

2. zona pemanfaatan terbatas dengan luas 208.329,40 (dua ratus delapan ribu tiga ratus dua puluh sembilan koma empat nol) Hektare, yang meliputi:

a) subzona wisata dengan luas 29.994,50 (dua puluh sembilan ribu sembilan ratus sembilan puluh empat koma lima nol) Hektare;

b) subzona perikanan tradisional dengan luas 178.098,46 (seratus tujuh puluh delapan ribu sembilan puluh delapan koma empat enam) Hektare;

- c) subzona perlindungan danau air asin 32,26 (tiga puluh dua koma dua enam) Hektare;
 - d) subzona perlindungan pulau kecil 204,18 (dua ratus empat koma satu delapan) Hektare; dan
3. zona lainnya berupa subzona kerakera dengan luas 9.854,90 (sembilan ribu delapan ratus lima puluh empat koma sembilan nol) Hektare.

- KEEMPAT : Taman Pesisir Teluk Berau dan Teluk Nusalasi-Van Den Bosch di Provinsi Papua Barat sebagaimana dimaksud diktum KETIGA dengan batas koordinat dan peta tercantum dalam Lampiran I dan Lampiran II yang merupakan bagian tidak terpisahkan dari Keputusan Menteri ini.
- KELIMA : Menunjuk Pemerintah Daerah Provinsi Papua Barat untuk melakukan pengelolaan Taman Pesisir Teluk Berau dan Teluk Nusalasi-Van Den Bosch di Provinsi Papua Barat yang meliputi penunjukan organisasi pengelola dan melakukan sosialisasi kawasan.
- KEENAM : Keputusan Menteri ini mulai berlaku pada tanggal ditetapkan.

Ditetapkan di Jakarta
pada tanggal 13 Juli 2020

MENTERI KELAUTAN DAN PERIKANAN
REPUBLIK INDONESIA,

ttd.

EDHY PRABOWO

Salinan sesuai dengan aslinya
Kepala Biro Hukum dan Organisasi

Tini Marni



LAMPIRAN I
KEPUTUSAN MENTERI KELAUTAN DAN PERIKANAN
REPUBLIK INDONESIA
NOMOR 79/KEPMEN-KP/2020
TENTANG
KAWASAN KONSERVASI PESISIR DAN PULAU-
PULAU KECIL TELUK BERAU DAN TELUK NUSALASI-
VAN DEN BOSCH DI PROVINSI PAPUA BARAT

BATAS KOORDINAT
KAWASAN KONSERVASI PESISIR DAN PULAU-PULAU KECIL TELUK BERAU
DAN TELUK NUSALASI-VAN DEN BOSCH DI PROVINSI PAPUA BARAT

Area I. Teluk Berau
Titik Koordinat Batas Terluar Kawasan

Nomor Titik Peta	Koordinat	
	Bujur Timur (BT)	Lintang Selatan (LS)
1	132° 38' 29,48"	2° 43' 42,60"
2	132° 38' 29,83"	2° 43' 43,13"
3	132° 38' 30,87"	2° 43' 42,70"
4	132° 38' 48,99"	2° 41' 59,98"
5	132° 37' 38,99"	2° 41' 6,30"
6	132° 36' 6,28"	2° 40' 17,41"
7	132° 32' 59,08"	2° 39' 53,61"
8	132° 28' 54,92"	2° 39' 49,63"
9	132° 26' 40,58"	2° 41' 52,37"
10	132° 26' 40,49"	2° 41' 58,08"
11	132° 26' 37,19"	2° 41' 58,06"
12	132° 26' 37,20"	2° 41' 59,46"
13	132° 27' 12,02"	2° 42' 28,95"
14	132° 27' 11,65"	2° 42' 29,29"
15	132° 27' 13,19"	2° 42' 30,83"
16	132° 27' 14,72"	2° 42' 30,32"
17	132° 27' 16,01"	2° 42' 27,07"
18	132° 27' 15,90"	2° 42' 26,94"
19	132° 25' 51,62"	2° 43' 24,48"
20	132° 25' 53,26"	2° 43' 24,48"
21	132° 25' 53,26"	2° 43' 20,97"
22	132° 25' 48,81"	2° 43' 20,97"
23	132° 25' 48,81"	2° 43' 22,44"
24	132° 25' 24,93"	2° 43' 20,51"
25	132° 24' 44,73"	2° 43' 20,47"
26	132° 24' 7,24"	2° 43' 36,62"

Nomor Titik Peta	Koordinat	
	Bujur Timur (BT)	Lintang Selatan (LS)
27	132° 23' 57,43"	2° 43' 59,32"
28	132° 24' 24,93"	2° 44' 12,09"
29	132° 25' 43,20"	2° 44' 8,61"
30	132° 25' 50,22"	2° 44' 5,74"
31	132° 25' 58,98"	2° 44' 5,82"
32	132° 25' 58,72"	2° 44' 6,54"
33	132° 26' 4,41"	2° 44' 8,10"
34	132° 26' 4,75"	2° 44' 7,06"
35	132° 27' 20,08"	2° 44' 2,70"
36	132° 27' 17,59"	2° 44' 12,24"
37	132° 27' 22,31"	2° 44' 12,71"
38	132° 27' 26,55"	2° 44' 1,94"
39	132° 28' 10,69"	2° 44' 16,24"
40	132° 28' 13,57"	2° 43' 52,86"
41	132° 27' 52,07"	2° 43' 45,23"
42	132° 27' 48,76"	2° 43' 44,27"
43	132° 27' 46,53"	2° 43' 41,82"
44	132° 27' 40,95"	2° 43' 43,83"
45	132° 27' 7,66"	2° 43' 24,28"
46	132° 27' 12,23"	2° 43' 25,11"
47	132° 27' 15,29"	2° 43' 22,74"
48	132° 28' 36,66"	2° 42' 49,22"
49	132° 28' 35,12"	2° 42' 53,74"
50	132° 28' 38,07"	2° 42' 59,56"
51	132° 28' 41,97"	2° 42' 55,79"
52	132° 28' 38,99"	2° 42' 50,69"
53	132° 28' 45,16"	2° 42' 44,06"
54	132° 28' 43,68"	2° 42' 47,18"
55	132° 28' 45,08"	2° 42' 58,52"
56	132° 28' 30,54"	2° 43' 9,32"
57	132° 28' 32,09"	2° 43' 12,24"
58	132° 29' 3,81"	2° 42' 50,96"
59	132° 29' 8,92"	2° 42' 55,54"
60	132° 29' 20,63"	2° 42' 51,96"
61	132° 29' 25,53"	2° 42' 51,30"
62	132° 29' 24,99"	2° 42' 49,69"
63	132° 29' 21,46"	2° 42' 48,81"
64	132° 28' 24,14"	2° 41' 23,58"
65	132° 28' 27,82"	2° 41' 28,12"
66	132° 28' 32,51"	2° 41' 25,28"
67	132° 28' 32,82"	2° 41' 22,12"
68	132° 29' 8,20"	2° 40' 59,75"

Nomor Titik Peta	Koordinat	
	Bujur Timur (BT)	Lintang Selatan (LS)
69	132° 29' 10,66"	2° 41' 2,29"
70	132° 29' 15,60"	2° 40' 59,51"
71	132° 29' 18,53"	2° 41' 6,55"
72	132° 29' 25,48"	2° 41' 1,19"
73	132° 29' 30,10"	2° 40' 55,01"
74	132° 29' 37,85"	2° 40' 59,43"
75	132° 29' 37,93"	2° 40' 54,96"
76	132° 29' 41,91"	2° 40' 52,12"
77	132° 29' 40,25"	2° 40' 53,65"
78	132° 29' 40,24"	2° 40' 59,48"
79	132° 29' 43,57"	2° 40' 59,48"
80	132° 29' 43,57"	2° 40' 55,27"
81	132° 29' 50,29"	2° 40' 52,35"
82	132° 29' 55,78"	2° 40' 56,15"
83	132° 29' 57,92"	2° 40' 53,02"
84	132° 29' 52,84"	2° 40' 50,31"
85	132° 30' 21,70"	2° 40' 59,81"
86	132° 30' 24,23"	2° 41' 0,03"
87	132° 30' 23,95"	2° 40' 57,56"
88	132° 30' 21,51"	2° 40' 56,41"
89	132° 30' 26,51"	2° 40' 54,55"
90	132° 30' 28,38"	2° 40' 56,05"
91	132° 30' 32,51"	2° 40' 56,58"
92	132° 30' 57,59"	2° 41' 13,65"
93	132° 31' 0,02"	2° 41' 13,58"
94	132° 30' 59,91"	2° 41' 10,90"
95	132° 30' 57,40"	2° 41' 11,24"
96	132° 30' 51,80"	2° 41' 4,44"
97	132° 30' 55,83"	2° 41' 3,26"
98	132° 30' 53,96"	2° 40' 57,02"
99	132° 30' 50,72"	2° 40' 58,21"
100	132° 31' 41,35"	2° 40' 59,17"
101	132° 31' 41,48"	2° 41' 3,21"
102	132° 31' 48,14"	2° 41' 2,85"
103	132° 31' 48,10"	2° 41' 1,84"
104	132° 33' 20,52"	2° 41' 21,36"
105	132° 33' 15,72"	2° 41' 22,51"
106	132° 33' 18,38"	2° 41' 26,52"
107	132° 33' 58,04"	2° 41' 33,26"
108	132° 34' 3,25"	2° 41' 35,27"
109	132° 34' 12,03"	2° 41' 32,42"
110	132° 34' 12,82"	2° 41' 26,70"

Nomor Titik Peta	Koordinat	
	Bujur Timur (BT)	Lintang Selatan (LS)
111	132° 34' 31,72"	2° 41' 30,85"
112	132° 34' 25,01"	2° 41' 41,00"
113	132° 34' 37,24"	2° 41' 44,43"
114	132° 35' 22,68"	2° 41' 44,31"
115	132° 35' 18,95"	2° 41' 44,31"
116	132° 35' 18,79"	2° 41' 50,82"
117	132° 35' 27,38"	2° 41' 54,77"
118	132° 35' 28,70"	2° 41' 53,69"
119	132° 35' 38,40"	2° 41' 55,56"
120	132° 35' 32,48"	2° 41' 56,40"
121	132° 35' 30,86"	2° 42' 2,33"
122	132° 35' 36,34"	2° 42' 2,63"
123	132° 35' 43,58"	2° 42' 8,30"
124	132° 35' 38,33"	2° 42' 14,31"
125	132° 35' 41,70"	2° 42' 16,73"
126	132° 35' 45,24"	2° 42' 9,72"
127	132° 35' 49,05"	2° 42' 26,66"
128	132° 35' 54,48"	2° 42' 35,15"
129	132° 36' 3,80"	2° 42' 31,24"
130	132° 36' 29,67"	2° 42' 32,58"
131	132° 36' 22,78"	2° 42' 34,50"
132	132° 36' 38,70"	2° 43' 7,77"
133	132° 36' 46,83"	2° 42' 59,95"
134	132° 36' 47,16"	2° 42' 43,91"
135	132° 36' 44,61"	2° 42' 40,67"
136	132° 36' 52,32"	2° 42' 49,52"
137	132° 36' 49,11"	2° 42' 52,95"
138	132° 36' 53,25"	2° 42' 56,52"
139	132° 36' 55,44"	2° 42' 53,24"
140	132° 37' 6,40"	2° 43' 18,46"
141	132° 36' 55,45"	2° 43' 25,31"
142	132° 36' 53,06"	2° 43' 28,82"
143	132° 37' 27,43"	2° 43' 26,32"
144	132° 38' 14,09"	2° 43' 37,42"
145	132° 38' 4,44"	2° 43' 38,75"
146	132° 37' 48,17"	2° 44' 0,46"
147	132° 38' 7,19"	2° 43' 55,74"
148	132° 38' 13,33"	2° 44' 22,14"
149	132° 37' 58,82"	2° 44' 29,32"
150	132° 38' 0,45"	2° 44' 36,58"
151	132° 38' 25,37"	2° 44' 21,83"
152	132° 38' 13,35"	2° 43' 59,36"

Titik Koordinat Batas Zona Inti

Nomor Titik Peta	Koordinat	
	Bujur Timur (BT)	Lintang Selatan (LS)
70	132° 29' 15,60"	2° 40' 59,51"
71	132° 29' 18,53"	2° 41' 6,55"
72	132° 29' 25,48"	2° 41' 1,19"
73	132° 29' 30,10"	2° 40' 55,01"
74	132° 29' 37,85"	2° 40' 59,43"
75	132° 29' 37,93"	2° 40' 54,96"
76	132° 29' 41,91"	2° 40' 52,12"
77	132° 29' 40,25"	2° 40' 53,65"
78	132° 29' 40,24"	2° 40' 59,48"
79	132° 29' 43,57"	2° 40' 59,48"
80	132° 29' 43,57"	2° 40' 55,27"
92	132° 30' 57,59"	2° 41' 13,65"
93	132° 31' 0,02"	2° 41' 13,58"
94	132° 30' 59,91"	2° 41' 10,90"
95	132° 30' 57,40"	2° 41' 11,24"
107	132° 33' 58,04"	2° 41' 33,26"
108	132° 34' 3,25"	2° 41' 35,27"
109	132° 34' 12,03"	2° 41' 32,42"
110	132° 34' 12,82"	2° 41' 26,70"
111	132° 34' 31,72"	2° 41' 30,85"
112	132° 34' 25,01"	2° 41' 41,00"
113	132° 34' 37,24"	2° 41' 44,43"
153	132° 29' 45,67"	2° 40' 53,86"
154	132° 29' 45,75"	2° 40' 34,64"
155	132° 29' 19,11"	2° 40' 34,58"
156	132° 29' 18,99"	2° 40' 49,19"
157	132° 29' 15,35"	2° 40' 53,42"
158	132° 30' 50,69"	2° 41' 8,66"
159	132° 30' 50,09"	2° 41' 8,89"
160	132° 35' 16,71"	2° 41' 35,34"
161	132° 35' 16,29"	2° 41' 1,62"
162	132° 34' 8,73"	2° 41' 1,82"
163	132° 34' 8,78"	2° 41' 17,05"

Titik Koordinat Batas Zona Pemanfaatan Terbatas
Subzona Perikanan Tradisional

Nomor Titik Peta	Koordinat	
	Bujur Timur (BT)	Lintang Selatan (LS)
1	132° 38' 29,48"	2° 43' 42,60"
2	132° 38' 29,83"	2° 43' 43,13"

Nomor Titik Peta	Koordinat	
	Bujur Timur (BT)	Lintang Selatan (LS)
3	132° 38' 30,87"	2° 43' 42,70"
4	132° 38' 48,99"	2° 41' 59,98"
5	132° 37' 38,99"	2° 41' 6,30"
6	132° 36' 6,28"	2° 40' 17,41"
7	132° 32' 59,08"	2° 39' 53,61"
8	132° 28' 54,92"	2° 39' 49,63"
9	132° 26' 40,58"	2° 41' 52,37"
10	132° 26' 40,49"	2° 41' 58,08"
11	132° 26' 37,19"	2° 41' 58,06"
12	132° 26' 37,20"	2° 41' 59,46"
13	132° 27' 12,02"	2° 42' 28,95"
14	132° 27' 11,65"	2° 42' 29,29"
15	132° 27' 13,19"	2° 42' 30,83"
16	132° 27' 14,72"	2° 42' 30,32"
17	132° 27' 16,01"	2° 42' 27,07"
18	132° 27' 15,90"	2° 42' 26,94"
19	132° 25' 51,62"	2° 43' 24,48"
20	132° 25' 53,26"	2° 43' 24,48"
21	132° 25' 53,26"	2° 43' 20,97"
22	132° 25' 48,81"	2° 43' 20,97"
23	132° 25' 48,81"	2° 43' 22,44"
24	132° 25' 24,93"	2° 43' 20,51"
25	132° 24' 44,73"	2° 43' 20,47"
26	132° 24' 7,24"	2° 43' 36,62"
27	132° 23' 57,43"	2° 43' 59,32"
28	132° 24' 24,93"	2° 44' 12,09"
29	132° 25' 43,20"	2° 44' 8,61"
30	132° 25' 50,22"	2° 44' 5,74"
31	132° 25' 58,98"	2° 44' 5,82"
32	132° 25' 58,72"	2° 44' 6,54"
33	132° 26' 4,41"	2° 44' 8,10"
34	132° 26' 4,75"	2° 44' 7,06"
35	132° 27' 20,08"	2° 44' 2,70"
36	132° 27' 17,59"	2° 44' 12,24"
37	132° 27' 22,31"	2° 44' 12,71"
38	132° 27' 26,55"	2° 44' 1,94"
39	132° 28' 10,69"	2° 44' 16,24"
40	132° 28' 13,57"	2° 43' 52,86"
41	132° 27' 52,07"	2° 43' 45,23"
42	132° 27' 48,76"	2° 43' 44,27"
43	132° 27' 46,53"	2° 43' 41,82"
44	132° 27' 40,95"	2° 43' 43,83"

Nomor Titik Peta	Koordinat	
	Bujur Timur (BT)	Lintang Selatan (LS)
45	132° 27' 7,66"	2° 43' 24,28"
46	132° 27' 12,23"	2° 43' 25,11"
47	132° 27' 15,29"	2° 43' 22,74"
48	132° 28' 36,66"	2° 42' 49,22"
49	132° 28' 35,12"	2° 42' 53,74"
50	132° 28' 38,07"	2° 42' 59,56"
51	132° 28' 41,97"	2° 42' 55,79"
52	132° 28' 38,99"	2° 42' 50,69"
53	132° 28' 45,16"	2° 42' 44,06"
54	132° 28' 43,68"	2° 42' 47,18"
55	132° 28' 45,08"	2° 42' 58,52"
56	132° 28' 30,54"	2° 43' 9,32"
57	132° 28' 32,09"	2° 43' 12,24"
58	132° 29' 3,81"	2° 42' 50,96"
59	132° 29' 8,92"	2° 42' 55,54"
60	132° 29' 20,63"	2° 42' 51,96"
61	132° 29' 25,53"	2° 42' 51,30"
62	132° 29' 24,99"	2° 42' 49,69"
63	132° 29' 21,46"	2° 42' 48,81"
64	132° 28' 24,14"	2° 41' 23,58"
65	132° 28' 27,82"	2° 41' 28,12"
66	132° 28' 32,51"	2° 41' 25,28"
67	132° 28' 32,82"	2° 41' 22,12"
68	132° 29' 8,20"	2° 40' 59,75"
69	132° 29' 10,66"	2° 41' 2,29"
70	132° 29' 15,60"	2° 40' 59,51"
81	132° 29' 50,29"	2° 40' 52,35"
82	132° 29' 55,78"	2° 40' 56,15"
83	132° 29' 57,92"	2° 40' 53,02"
84	132° 29' 52,84"	2° 40' 50,31"
85	132° 30' 21,70"	2° 40' 59,81"
86	132° 30' 24,23"	2° 41' 0,03"
87	132° 30' 23,95"	2° 40' 57,56"
88	132° 30' 21,51"	2° 40' 56,41"
89	132° 30' 26,51"	2° 40' 54,55"
90	132° 30' 28,38"	2° 40' 56,05"
91	132° 30' 32,51"	2° 40' 56,58"
96	132° 30' 51,80"	2° 41' 4,44"
97	132° 30' 55,83"	2° 41' 3,26"
98	132° 30' 53,96"	2° 40' 57,02"
99	132° 30' 50,72"	2° 40' 58,21"
100	132° 31' 41,35"	2° 40' 59,17"

Nomor Titik Peta	Koordinat	
	Bujur Timur (BT)	Lintang Selatan (LS)
101	132° 31' 41,48"	2° 41' 3,21"
102	132° 31' 48,14"	2° 41' 2,85"
103	132° 31' 48,10"	2° 41' 1,84"
104	132° 33' 20,52"	2° 41' 21,36"
105	132° 33' 15,72"	2° 41' 22,51"
106	132° 33' 18,38"	2° 41' 26,52"
107	132° 33' 58,04"	2° 41' 33,26"
114	132° 35' 22,68"	2° 41' 44,31"
115	132° 35' 18,95"	2° 41' 44,31"
116	132° 35' 18,79"	2° 41' 50,82"
117	132° 35' 27,38"	2° 41' 54,77"
118	132° 35' 28,70"	2° 41' 53,69"
119	132° 35' 38,40"	2° 41' 55,56"
120	132° 35' 32,48"	2° 41' 56,40"
121	132° 35' 30,86"	2° 42' 2,33"
122	132° 35' 36,34"	2° 42' 2,63"
123	132° 35' 43,58"	2° 42' 8,30"
124	132° 35' 38,33"	2° 42' 14,31"
125	132° 35' 41,70"	2° 42' 16,73"
126	132° 35' 45,24"	2° 42' 9,72"
127	132° 35' 49,05"	2° 42' 26,66"
128	132° 35' 54,48"	2° 42' 35,15"
129	132° 36' 3,80"	2° 42' 31,24"
130	132° 36' 29,67"	2° 42' 32,58"
131	132° 36' 22,78"	2° 42' 34,50"
132	132° 36' 38,70"	2° 43' 7,77"
133	132° 36' 46,83"	2° 42' 59,95"
134	132° 36' 47,16"	2° 42' 43,91"
135	132° 36' 44,61"	2° 42' 40,67"
136	132° 36' 52,32"	2° 42' 49,52"
137	132° 36' 49,11"	2° 42' 52,95"
138	132° 36' 53,25"	2° 42' 56,52"
139	132° 36' 55,44"	2° 42' 53,24"
140	132° 37' 6,40"	2° 43' 18,46"
141	132° 36' 55,45"	2° 43' 25,31"
142	132° 36' 53,06"	2° 43' 28,82"
143	132° 37' 27,43"	2° 43' 26,32"
144	132° 38' 14,09"	2° 43' 37,42"
145	132° 38' 4,44"	2° 43' 38,75"
146	132° 37' 48,17"	2° 44' 0,46"
147	132° 38' 7,19"	2° 43' 55,74"
148	132° 38' 13,33"	2° 44' 22,14"

Nomor Titik Peta	Koordinat	
	Bujur Timur (BT)	Lintang Selatan (LS)
149	132° 37' 58,82"	2° 44' 29,32"
150	132° 38' 0,45"	2° 44' 36,58"
151	132° 38' 25,37"	2° 44' 21,83"
152	132° 38' 13,35"	2° 43' 59,36"
153	132° 29' 45,67"	2° 40' 53,86"
154	132° 29' 45,75"	2° 40' 34,64"
155	132° 29' 19,11"	2° 40' 34,58"
156	132° 29' 18,99"	2° 40' 49,19"
157	132° 29' 15,35"	2° 40' 53,42"
158	132° 30' 50,69"	2° 41' 8,66"
159	132° 30' 50,09"	2° 41' 8,89"
160	132° 35' 16,71"	2° 41' 35,34"
161	132° 35' 16,29"	2° 41' 1,62"
162	132° 34' 8,73"	2° 41' 1,82"
163	132° 34' 8,78"	2° 41' 17,05"

Titik Koordinat Batas Zona Pemanfaatan Terbatas
Subzona Perlindungan Danau Air Asin

Nomor Titik Peta	Koordinat	
	Bujur Timur (BT)	Lintang Selatan (LS)
164	132° 28' 51,85"	2° 41' 6,42"
165	132° 29' 0,15"	2° 41' 2,02"
166	132° 29' 8,92"	2° 41' 13,43"
167	132° 28' 51,16"	2° 41' 20,35"
168	132° 28' 55,91"	2° 41' 9,67"
169	132° 28' 42,22"	2° 41' 18,94"
170	132° 28' 55,65"	2° 41' 28,81"
171	132° 28' 40,30"	2° 41' 31,72"
172	132° 28' 49,20"	2° 41' 34,62"
173	132° 28' 56,47"	2° 41' 35,48"
174	132° 28' 48,00"	2° 41' 38,17"
175	132° 28' 45,94"	2° 41' 40,74"
176	132° 28' 46,80"	2° 41' 37,87"
177	132° 28' 40,30"	2° 41' 39,24"
178	132° 28' 40,81"	2° 41' 34,67"
179	132° 28' 38,33"	2° 41' 33,90"
180	132° 28' 37,13"	2° 41' 31,97"
181	132° 28' 34,78"	2° 41' 31,38"
182	132° 28' 40,98"	2° 41' 26,72"
183	132° 28' 39,05"	2° 41' 24,45"
184	132° 28' 40,42"	2° 41' 20,52"

Nomor Titik Peta	Koordinat	
	Bujur Timur (BT)	Lintang Selatan (LS)
185	132° 28' 34,82"	2° 41' 34,41"
186	132° 28' 36,74"	2° 41' 35,14"
187	132° 28' 35,50"	2° 41' 36,08"
188	132° 28' 33,75"	2° 41' 35,99"
189	132° 28' 33,24"	2° 41' 35,26"
190	132° 28' 28,96"	2° 41' 31,59"
191	132° 28' 29,81"	2° 41' 34,75"
192	132° 28' 31,14"	2° 41' 35,95"
193	132° 28' 27,20"	2° 41' 37,70"
194	132° 28' 25,15"	2° 41' 34,58"
195	132° 28' 21,94"	2° 41' 35,78"
196	132° 28' 21,56"	2° 41' 33,17"
197	132° 28' 24,12"	2° 41' 34,07"

Titik Koordinat Batas Zona Pemanfaatan Terbatas
Subzona Perlindungan Pulau Kecil

Nomor Titik Peta	Koordinat	
	Bujur Timur (BT)	Lintang Selatan (LS)
198	132° 38' 25,98"	2° 43' 28,43"
199	132° 38' 27,72"	2° 43' 30,40"
200	132° 38' 24,85"	2° 43' 34,17"
201	132° 38' 21,53"	2° 43' 32,80"
202	132° 37' 56,61"	2° 43' 19,69"
203	132° 37' 56,89"	2° 43' 19,96"
204	132° 37' 55,52"	2° 43' 21,24"
205	132° 37' 54,78"	2° 43' 20,61"
206	132° 37' 47,46"	2° 43' 21,76"
207	132° 37' 47,92"	2° 43' 22,18"
208	132° 37' 47,06"	2° 43' 22,78"
209	132° 37' 46,60"	2° 43' 22,25"
210	132° 37' 30,69"	2° 43' 14,46"
211	132° 37' 33,22"	2° 43' 16,58"
212	132° 37' 31,36"	2° 43' 18,62"
213	132° 37' 28,87"	2° 43' 16,05"
214	132° 37' 26,83"	2° 43' 2,80"
215	132° 37' 29,09"	2° 43' 4,15"
216	132° 37' 23,33"	2° 43' 6,94"
217	132° 37' 18,98"	2° 43' 4,68"
218	132° 36' 43,74"	2° 42' 32,55"
219	132° 36' 44,55"	2° 42' 33,38"
220	132° 36' 42,80"	2° 42' 34,99"
221	132° 36' 41,93"	2° 42' 34,26"

Nomor Titik Peta	Koordinat	
	Bujur Timur (BT)	Lintang Selatan (LS)
222	132° 36' 31,76"	2° 42' 35,80"
223	132° 36' 32,42"	2° 42' 37,12"
224	132° 36' 31,69"	2° 42' 37,93"
225	132° 36' 30,94"	2° 42' 36,88"
226	132° 36' 23,66"	2° 42' 18,14"
227	132° 36' 25,72"	2° 42' 19,58"
228	132° 36' 25,10"	2° 42' 20,54"
229	132° 36' 22,42"	2° 42' 19,46"
230	132° 36' 19,87"	2° 42' 21,37"
231	132° 36' 21,74"	2° 42' 21,74"
232	132° 36' 20,09"	2° 42' 23,55"
233	132° 36' 19,40"	2° 42' 21,94"
234	132° 35' 56,60"	2° 42' 4,66"
235	132° 36' 0,29"	2° 42' 7,39"
236	132° 35' 57,84"	2° 42' 8,57"
237	132° 35' 55,22"	2° 42' 5,77"
238	132° 35' 50,33"	2° 41' 57,93"
239	132° 35' 53,25"	2° 42' 1,52"
240	132° 35' 52,34"	2° 42' 2,90"
241	132° 35' 47,84"	2° 41' 59,94"
242	132° 35' 49,12"	2° 41' 47,80"
243	132° 35' 51,95"	2° 41' 49,60"
244	132° 35' 49,68"	2° 41' 53,45"
245	132° 35' 48,18"	2° 41' 51,06"
246	132° 35' 35,59"	2° 41' 47,12"
247	132° 35' 36,38"	2° 41' 47,78"
248	132° 35' 35,66"	2° 41' 48,52"
249	132° 35' 35,02"	2° 41' 47,65"
250	132° 35' 31,50"	2° 41' 23,58"
251	132° 35' 32,21"	2° 41' 24,91"
252	132° 35' 30,56"	2° 41' 25,73"
253	132° 35' 29,57"	2° 41' 24,40"
254	132° 33' 57,88"	2° 41' 12,10"
255	132° 33' 59,38"	2° 41' 13,71"
256	132° 33' 56,96"	2° 41' 15,87"
257	132° 33' 55,38"	2° 41' 14,04"
258	132° 33' 47,86"	2° 41' 11,03"
259	132° 33' 49,00"	2° 41' 12,89"
260	132° 33' 46,98"	2° 41' 14,34"
261	132° 33' 45,33"	2° 41' 12,74"
262	132° 33' 37,40"	2° 41' 11,41"
263	132° 33' 38,61"	2° 41' 12,53"

Nomor Titik Peta	Koordinat	
	Bujur Timur (BT)	Lintang Selatan (LS)
264	132° 33' 37,36"	2° 41' 13,73"
265	132° 33' 36,21"	2° 41' 12,62"
266	132° 33' 0,59"	2° 41' 5,42"
267	132° 33' 1,99"	2° 41' 6,80"
268	132° 32' 59,11"	2° 41' 8,93"
269	132° 32' 58,59"	2° 41' 8,54"
270	132° 32' 54,29"	2° 41' 7,12"
271	132° 32' 56,27"	2° 41' 8,35"
272	132° 32' 54,51"	2° 41' 11,12"
273	132° 32' 52,85"	2° 41' 9,30"
274	132° 32' 52,44"	2° 41' 13,69"
275	132° 32' 57,85"	2° 41' 16,08"
276	132° 32' 52,60"	2° 41' 21,83"
277	132° 32' 50,17"	2° 41' 16,84"
278	132° 32' 34,92"	2° 41' 22,23"
279	132° 32' 36,96"	2° 41' 25,32"
280	132° 32' 35,55"	2° 41' 26,82"
281	132° 32' 32,64"	2° 41' 23,82"
282	132° 32' 31,73"	2° 41' 10,42"
283	132° 32' 32,53"	2° 41' 11,97"
284	132° 32' 30,00"	2° 41' 17,92"
285	132° 32' 28,17"	2° 41' 14,24"
286	132° 32' 40,75"	2° 40' 58,81"
287	132° 32' 42,58"	2° 41' 1,53"
288	132° 32' 34,06"	2° 41' 8,47"
289	132° 32' 31,78"	2° 41' 6,11"
290	132° 32' 57,39"	2° 40' 47,45"
291	132° 32' 58,24"	2° 40' 48,10"
292	132° 32' 57,50"	2° 40' 49,46"
293	132° 32' 56,62"	2° 40' 48,65"
294	132° 32' 59,46"	2° 40' 44,95"
295	132° 33' 4,65"	2° 40' 46,10"
296	132° 33' 2,11"	2° 40' 49,25"
297	132° 32' 58,53"	2° 40' 46,20"
298	132° 32' 55,49"	2° 40' 39,90"
299	132° 32' 57,34"	2° 40' 42,58"
300	132° 32' 56,18"	2° 40' 43,95"
301	132° 32' 54,13"	2° 40' 41,54"
302	132° 32' 45,77"	2° 40' 43,15"
303	132° 32' 51,05"	2° 40' 46,95"
304	132° 32' 48,38"	2° 40' 50,83"
305	132° 32' 45,19"	2° 40' 44,48"

Nomor Titik Peta	Koordinat	
	Bujur Timur (BT)	Lintang Selatan (LS)
306	132° 32' 37,91"	2° 40' 47,57"
307	132° 32' 42,05"	2° 40' 50,40"
308	132° 32' 40,31"	2° 40' 52,75"
309	132° 32' 36,22"	2° 40' 48,54"
310	132° 32' 11,60"	2° 40' 40,07"
311	132° 32' 11,99"	2° 40' 42,78"
312	132° 32' 11,18"	2° 40' 43,61"
313	132° 32' 10,00"	2° 40' 41,98"
314	132° 32' 8,13"	2° 40' 43,41"
315	132° 32' 11,77"	2° 40' 45,77"
316	132° 32' 10,33"	2° 40' 47,68"
317	132° 32' 4,66"	2° 40' 45,25"
318	132° 31' 57,34"	2° 40' 47,90"
319	132° 32' 16,81"	2° 40' 50,38"
320	132° 32' 33,58"	2° 40' 58,23"
321	132° 32' 24,61"	2° 41' 0,34"
322	132° 32' 7,87"	2° 40' 58,42"
323	132° 31' 54,57"	2° 40' 50,54"
324	132° 31' 44,84"	2° 40' 50,83"
325	132° 31' 47,57"	2° 40' 53,66"
326	132° 31' 46,12"	2° 40' 55,23"
327	132° 31' 43,14"	2° 40' 52,88"
328	132° 31' 41,53"	2° 40' 33,18"
329	132° 31' 43,89"	2° 40' 36,85"
330	132° 31' 43,41"	2° 40' 37,28"
331	132° 31' 40,85"	2° 40' 34,37"
332	132° 30' 44,90"	2° 40' 39,96"
333	132° 30' 45,52"	2° 40' 40,43"
334	132° 30' 45,15"	2° 40' 40,71"
335	132° 30' 44,37"	2° 40' 40,29"
336	132° 30' 45,24"	2° 40' 43,53"
337	132° 30' 47,86"	2° 40' 45,16"
338	132° 30' 47,15"	2° 40' 45,85"
339	132° 30' 44,53"	2° 40' 44,62"
340	132° 30' 46,87"	2° 40' 56,43"
341	132° 30' 48,06"	2° 40' 57,40"
342	132° 30' 47,30"	2° 40' 58,07"
343	132° 30' 45,87"	2° 40' 57,11"
344	132° 30' 41,29"	2° 40' 57,50"
345	132° 30' 48,72"	2° 41' 2,25"
346	132° 30' 45,28"	2° 41' 5,49"
347	132° 30' 39,07"	2° 40' 59,41"

Nomor Titik Peta	Koordinat	
	Bujur Timur (BT)	Lintang Selatan (LS)
348	132° 30' 35,31"	2° 40' 54,48"
349	132° 30' 35,69"	2° 40' 54,98"
350	132° 30' 34,89"	2° 40' 56,13"
351	132° 30' 34,33"	2° 40' 55,59"
352	132° 30' 30,98"	2° 40' 47,76"
353	132° 30' 32,87"	2° 40' 50,27"
354	132° 30' 31,63"	2° 40' 51,91"
355	132° 30' 29,16"	2° 40' 48,45"
356	132° 30' 28,09"	2° 40' 48,48"
357	132° 30' 28,48"	2° 40' 48,88"
358	132° 30' 26,07"	2° 40' 51,96"
359	132° 30' 24,63"	2° 40' 50,61"
360	132° 30' 17,52"	2° 40' 52,61"
361	132° 30' 17,81"	2° 40' 52,94"
362	132° 30' 17,32"	2° 40' 53,55"
363	132° 30' 16,89"	2° 40' 53,12"
364	132° 30' 46,27"	2° 40' 17,24"
365	132° 30' 47,77"	2° 40' 18,78"
366	132° 30' 46,93"	2° 40' 20,35"
367	132° 30' 45,63"	2° 40' 18,14"
368	132° 30' 39,81"	2° 40' 14,56"
369	132° 30' 45,12"	2° 40' 18,08"
370	132° 30' 42,54"	2° 40' 22,49"
371	132° 30' 36,40"	2° 40' 16,86"
372	132° 30' 33,30"	2° 40' 23,29"
373	132° 30' 34,38"	2° 40' 24,17"
374	132° 30' 33,67"	2° 40' 25,85"
375	132° 30' 32,74"	2° 40' 24,62"
376	132° 30' 19,71"	2° 40' 28,93"
377	132° 30' 21,27"	2° 40' 30,46"
378	132° 30' 20,52"	2° 40' 31,83"
379	132° 30' 18,34"	2° 40' 29,61"
380	132° 30' 21,50"	2° 40' 25,85"
381	132° 30' 21,43"	2° 40' 22,13"
382	132° 30' 18,85"	2° 40' 21,76"
383	132° 30' 14,62"	2° 40' 27,46"
384	132° 30' 14,51"	2° 40' 23,80"
385	132° 30' 14,36"	2° 40' 28,77"
386	132° 30' 14,68"	2° 40' 28,97"
387	132° 30' 14,52"	2° 40' 29,28"
388	132° 30' 14,13"	2° 40' 28,95"
389	132° 30' 6,38"	2° 40' 38,07"

Nomor Titik Peta	Koordinat	
	Bujur Timur (BT)	Lintang Selatan (LS)
390	132° 30' 6,98"	2° 40' 38,54"
391	132° 30' 6,44"	2° 40' 40,20"
392	132° 30' 5,53"	2° 40' 39,34"
393	132° 29' 55,03"	2° 40' 42,33"
394	132° 29' 57,62"	2° 40' 43,68"
395	132° 29' 56,61"	2° 40' 44,75"
396	132° 29' 54,33"	2° 40' 43,17"
397	132° 29' 53,20"	2° 40' 44,69"
398	132° 29' 52,14"	2° 40' 43,82"
399	132° 29' 49,65"	2° 40' 49,23"
400	132° 29' 47,62"	2° 40' 47,52"
401	132° 30' 5,68"	2° 40' 10,37"
402	132° 30' 7,25"	2° 40' 11,78"
403	132° 30' 6,62"	2° 40' 12,40"
404	132° 30' 5,39"	2° 40' 10,76"
405	132° 30' 14,44"	2° 40' 10,16"
406	132° 30' 16,68"	2° 40' 12,00"
407	132° 30' 15,61"	2° 40' 12,94"
408	132° 30' 13,28"	2° 40' 11,25"
409	132° 30' 19,34"	2° 40' 11,44"
410	132° 30' 20,53"	2° 40' 12,56"
411	132° 30' 19,48"	2° 40' 13,33"
412	132° 30' 18,29"	2° 40' 12,51"
413	132° 30' 18,13"	2° 40' 4,27"
414	132° 30' 20,56"	2° 40' 6,27"
415	132° 30' 19,60"	2° 40' 8,45"
416	132° 30' 17,50"	2° 40' 6,14"
417	132° 30' 16,34"	2° 39' 57,68"
418	132° 30' 18,37"	2° 39' 59,22"
419	132° 30' 17,91"	2° 40' 0,40"
420	132° 30' 15,78"	2° 39' 58,59"
421	132° 29' 56,41"	2° 40' 0,90"
422	132° 30' 12,61"	2° 39' 57,93"
423	132° 30' 14,57"	2° 40' 3,76"
424	132° 30' 4,90"	2° 40' 9,49"
425	132° 29' 52,65"	2° 40' 20,06"
426	132° 29' 47,98"	2° 40' 16,39"
427	132° 29' 47,15"	2° 40' 6,38"
428	132° 29' 48,47"	2° 40' 22,85"
429	132° 29' 47,75"	2° 40' 22,42"
430	132° 29' 48,24"	2° 40' 23,27"
431	132° 29' 47,55"	2° 40' 22,60"

Nomor Titik Peta	Koordinat	
	Bujur Timur (BT)	Lintang Selatan (LS)
432	132° 29' 37,49"	2° 40' 21,48"
433	132° 29' 38,87"	2° 40' 22,75"
434	132° 29' 37,47"	2° 40' 24,37"
435	132° 29' 36,14"	2° 40' 23,10"
436	132° 29' 35,95"	2° 40' 1,44"
437	132° 29' 40,06"	2° 40' 16,84"
438	132° 29' 28,97"	2° 40' 23,71"
439	132° 29' 7,02"	2° 40' 16,30"
440	132° 29' 9,63"	2° 40' 8,22"
441	132° 29' 4,14"	2° 40' 12,39"
442	132° 29' 6,01"	2° 40' 13,63"
443	132° 29' 2,89"	2° 40' 17,69"
444	132° 29' 1,56"	2° 40' 16,20"
445	132° 29' 1,45"	2° 40' 11,73"
446	132° 29' 2,18"	2° 40' 13,03"
447	132° 29' 1,20"	2° 40' 13,90"
448	132° 29' 0,76"	2° 40' 13,30"
449	132° 29' 3,28"	2° 40' 3,83"
450	132° 29' 6,86"	2° 40' 7,54"
451	132° 29' 2,89"	2° 40' 9,98"
452	132° 29' 2,03"	2° 40' 7,57"
453	132° 28' 59,93"	2° 39' 59,74"
454	132° 29' 0,25"	2° 40' 1,02"
455	132° 28' 59,36"	2° 40' 1,86"
456	132° 28' 58,87"	2° 40' 1,14"
457	132° 28' 59,19"	2° 40' 0,08"
458	132° 29' 1,71"	2° 39' 50,67"
459	132° 29' 4,67"	2° 39' 53,86"
460	132° 29' 3,29"	2° 39' 58,62"
461	132° 29' 1,32"	2° 39' 55,47"
462	132° 29' 14,95"	2° 40' 43,01"
463	132° 29' 16,30"	2° 40' 44,48"
464	132° 29' 15,67"	2° 40' 45,60"
465	132° 29' 14,20"	2° 40' 43,60"
466	132° 29' 10,01"	2° 40' 47,19"
467	132° 29' 10,66"	2° 40' 48,05"
468	132° 29' 10,01"	2° 40' 49,16"
469	132° 29' 9,31"	2° 40' 48,28"
470	132° 29' 1,50"	2° 40' 40,66"
471	132° 29' 2,24"	2° 40' 41,89"
472	132° 29' 1,54"	2° 40' 42,59"
473	132° 29' 0,70"	2° 40' 41,56"

Nomor Titik Peta	Koordinat	
	Bujur Timur (BT)	Lintang Selatan (LS)
474	132° 29' 0,99"	2° 40' 43,53"
475	132° 29' 4,27"	2° 40' 50,47"
476	132° 28' 59,55"	2° 40' 54,99"
477	132° 28' 57,91"	2° 40' 53,38"
478	132° 29' 0,01"	2° 40' 44,76"
479	132° 28' 55,86"	2° 40' 53,18"
480	132° 28' 57,09"	2° 40' 54,16"
481	132° 28' 55,99"	2° 40' 55,10"
482	132° 28' 55,13"	2° 40' 54,04"
483	132° 28' 51,24"	2° 40' 52,32"
484	132° 28' 51,80"	2° 40' 52,74"
485	132° 28' 51,32"	2° 40' 53,03"
486	132° 28' 50,90"	2° 40' 52,83"
487	132° 28' 48,55"	2° 40' 54,20"
488	132° 28' 49,18"	2° 40' 55,00"
489	132° 28' 48,46"	2° 40' 55,86"
490	132° 28' 47,87"	2° 40' 54,98"
491	132° 28' 39,70"	2° 40' 59,98"
492	132° 28' 40,29"	2° 41' 1,63"
493	132° 28' 39,34"	2° 41' 2,27"
494	132° 28' 38,47"	2° 41' 0,78"
495	132° 28' 36,84"	2° 41' 3,63"
496	132° 28' 37,57"	2° 41' 4,95"
497	132° 28' 36,20"	2° 41' 7,05"
498	132° 28' 35,31"	2° 41' 4,91"
499	132° 28' 26,42"	2° 41' 12,12"
500	132° 28' 28,34"	2° 41' 15,28"
501	132° 28' 27,43"	2° 41' 15,77"
502	132° 28' 23,74"	2° 41' 14,55"
503	132° 28' 23,61"	2° 41' 13,57"
504	132° 27' 51,62"	2° 41' 26,33"
505	132° 27' 52,58"	2° 41' 27,03"
506	132° 27' 51,77"	2° 41' 28,16"
507	132° 27' 50,93"	2° 41' 27,42"
508	132° 27' 59,99"	2° 41' 30,67"
509	132° 27' 59,30"	2° 41' 33,92"
510	132° 27' 57,42"	2° 41' 35,21"
511	132° 27' 56,58"	2° 41' 31,52"
512	132° 28' 16,78"	2° 41' 39,72"
513	132° 28' 18,63"	2° 41' 41,29"
514	132° 28' 16,14"	2° 41' 43,84"
515	132° 28' 15,25"	2° 41' 42,69"

Nomor Titik Peta	Koordinat	
	Bujur Timur (BT)	Lintang Selatan (LS)
516	132° 29' 32,93"	2° 42' 27,00"
517	132° 29' 35,14"	2° 42' 28,23"
518	132° 29' 34,86"	2° 42' 30,18"
519	132° 29' 33,45"	2° 42' 32,41"
520	132° 29' 32,34"	2° 42' 27,80"
521	132° 29' 43,06"	2° 42' 33,58"
522	132° 29' 43,92"	2° 42' 35,55"
523	132° 29' 42,78"	2° 42' 39,38"
524	132° 29' 40,12"	2° 42' 36,31"
525	132° 29' 27,64"	2° 42' 39,27"
526	132° 29' 27,24"	2° 42' 43,34"
527	132° 29' 22,40"	2° 42' 45,90"
528	132° 29' 21,92"	2° 42' 43,23"
529	132° 28' 59,67"	2° 42' 36,95"
530	132° 28' 57,66"	2° 42' 34,95"
531	132° 29' 7,85"	2° 42' 28,56"
532	132° 29' 8,79"	2° 42' 33,49"
533	132° 28' 43,68"	2° 42' 35,48"
534	132° 28' 52,01"	2° 42' 32,63"
535	132° 28' 55,96"	2° 42' 34,69"
536	132° 28' 55,37"	2° 42' 37,59"
537	132° 28' 46,15"	2° 42' 41,59"
538	132° 28' 42,08"	2° 42' 37,39"
539	132° 28' 37,92"	2° 42' 43,09"
540	132° 28' 37,46"	2° 42' 37,10"
541	132° 28' 40,15"	2° 42' 37,90"
542	132° 28' 42,11"	2° 42' 40,71"
543	132° 28' 34,21"	2° 42' 38,27"
544	132° 28' 28,35"	2° 42' 39,92"
545	132° 28' 30,39"	2° 42' 40,82"
546	132° 28' 28,34"	2° 42' 47,08"
547	132° 28' 25,22"	2° 42' 46,53"
548	132° 28' 25,15"	2° 42' 43,97"
549	132° 28' 24,50"	2° 42' 29,05"
550	132° 28' 25,54"	2° 42' 29,10"
551	132° 28' 26,25"	2° 42' 29,84"
552	132° 28' 25,25"	2° 42' 30,90"
553	132° 28' 24,34"	2° 42' 31,01"
554	132° 28' 23,51"	2° 42' 29,87"
555	132° 28' 18,09"	2° 42' 28,07"
556	132° 28' 18,47"	2° 42' 28,96"
557	132° 28' 18,03"	2° 42' 29,42"

Nomor Titik Peta	Koordinat	
	Bujur Timur (BT)	Lintang Selatan (LS)
558	132° 28' 17,53"	2° 42' 28,92"
559	132° 28' 18,08"	2° 42' 31,31"
560	132° 28' 19,31"	2° 42' 33,39"
561	132° 28' 18,01"	2° 42' 35,30"
562	132° 28' 15,05"	2° 42' 33,77"
563	132° 28' 11,99"	2° 42' 34,52"
564	132° 28' 12,12"	2° 42' 35,66"
565	132° 28' 11,30"	2° 42' 36,51"
566	132° 28' 10,52"	2° 42' 35,88"
567	132° 27' 51,56"	2° 42' 36,99"
568	132° 27' 52,52"	2° 42' 37,71"
569	132° 27' 52,87"	2° 42' 36,34"
570	132° 27' 51,75"	2° 42' 36,05"
571	132° 27' 49,69"	2° 42' 40,59"
572	132° 27' 52,40"	2° 42' 41,70"
573	132° 27' 51,70"	2° 42' 42,82"
574	132° 27' 49,78"	2° 42' 43,13"
575	132° 27' 48,85"	2° 42' 41,88"
576	132° 27' 7,05"	2° 43' 57,29"
577	132° 27' 8,19"	2° 43' 57,57"
578	132° 27' 8,69"	2° 43' 58,13"
579	132° 27' 8,42"	2° 43' 58,52"
580	132° 27' 6,80"	2° 43' 58,37"
581	132° 27' 6,30"	2° 43' 57,91"
582	132° 27' 6,50"	2° 43' 57,39"
583	132° 26' 24,65"	2° 44' 1,78"
584	132° 26' 25,38"	2° 44' 2,80"
585	132° 26' 24,80"	2° 44' 3,33"
586	132° 26' 23,99"	2° 44' 2,43"
587	132° 26' 21,14"	2° 44' 1,75"
588	132° 26' 21,53"	2° 44' 2,68"
589	132° 26' 20,34"	2° 44' 3,56"
590	132° 26' 20,08"	2° 44' 2,18"
591	132° 26' 53,96"	2° 43' 11,40"
592	132° 26' 55,20"	2° 43' 11,87"
593	132° 26' 55,37"	2° 43' 13,02"
594	132° 26' 53,99"	2° 43' 13,84"
595	132° 26' 53,31"	2° 43' 12,09"
596	132° 27' 17,74"	2° 42' 50,59"
597	132° 27' 18,51"	2° 42' 51,29"
598	132° 27' 18,16"	2° 42' 51,97"
599	132° 27' 17,10"	2° 42' 50,97"

Nomor Titik Peta	Koordinat	
	Bujur Timur (BT)	Lintang Selatan (LS)
600	132° 27' 15,64"	2° 42' 47,69"
601	132° 27' 16,50"	2° 42' 48,90"
602	132° 27' 15,54"	2° 42' 50,64"
603	132° 27' 14,45"	2° 42' 48,54"
604	132° 27' 18,76"	2° 42' 46,52"
605	132° 27' 19,43"	2° 42' 47,02"
606	132° 27' 19,07"	2° 42' 47,57"
607	132° 27' 18,39"	2° 42' 46,78"
608	132° 27' 21,12"	2° 42' 45,51"
609	132° 27' 22,04"	2° 42' 46,82"
610	132° 27' 22,32"	2° 42' 48,69"
611	132° 27' 20,46"	2° 42' 46,66"
612	132° 27' 27,54"	2° 42' 41,55"
613	132° 27' 29,06"	2° 42' 43,66"
614	132° 27' 25,90"	2° 42' 46,33"
615	132° 27' 24,03"	2° 42' 44,13"
616	132° 27' 24,26"	2° 42' 32,94"
617	132° 27' 27,46"	2° 42' 37,53"
618	132° 27' 23,52"	2° 42' 41,57"
619	132° 27' 21,33"	2° 42' 34,75"
620	132° 27' 4,08"	2° 42' 32,97"
621	132° 27' 4,63"	2° 42' 32,14"
622	132° 27' 4,90"	2° 42' 32,42"
623	132° 27' 3,90"	2° 42' 32,76"
624	132° 27' 23,11"	2° 42' 26,96"
625	132° 27' 23,44"	2° 42' 27,48"
626	132° 27' 22,59"	2° 42' 28,22"
627	132° 27' 22,16"	2° 42' 27,56"
628	132° 26' 46,51"	2° 42' 2,09"
629	132° 26' 47,08"	2° 42' 5,72"
630	132° 26' 43,97"	2° 42' 8,71"
631	132° 26' 43,19"	2° 42' 5,28"

Area II. Teluk Berau
Titik Koordinat Batas Terluar Kawasan

Nomor Titik Peta	Koordinat	
	Bujur Timur (BT)	Lintang Selatan (LS)
632	132° 38' 51,67"	2° 41' 44,79"
633	132° 40' 49,00"	2° 30' 39,54"
634	132° 16' 39,57"	2° 27' 27,88"
635	132° 15' 50,29"	2° 32' 5,55"

Nomor Titik Peta	Koordinat	
	Bujur Timur (BT)	Lintang Selatan (LS)
636	132° 25' 17,32"	2° 38' 53,46"
637	132° 27' 40,11"	2° 40' 45,18"
638	132° 28' 57,12"	2° 39' 37,23"
639	132° 33' 0,00"	2° 39' 40,62"
640	132° 36' 10,19"	2° 40' 4,89"
641	132° 37' 45,80"	2° 40' 55,20"
642	132° 32' 42,60"	2° 39' 12,30"
643	132° 32' 42,60"	2° 39' 28,59"
644	132° 32' 58,77"	2° 39' 28,59"
645	132° 32' 58,76"	2° 39' 18,05"

Titik Koordinat Batas Zona Inti

Nomor Titik Peta	Koordinat	
	Bujur Timur (BT)	Lintang Selatan (LS)
646	132° 28' 15,68"	2° 37' 28,24"
647	132° 28' 15,68"	2° 37' 13,34"
648	132° 27' 57,28"	2° 37' 13,34"
649	132° 27' 57,58"	2° 37' 25,53"

Titik Koordinat Batas Zona Pemanfaatan Terbatas Subzona Wisata

Nomor Titik Peta	Koordinat	
	Bujur Timur (BT)	Lintang Selatan (LS)
638	132° 28' 57,12"	2° 39' 37,23"
650	132° 28' 56,87"	2° 39' 31,92"
651	132° 30' 29,92"	2° 39' 39,39"
652	132° 32' 16,78"	2° 38' 53,66"
653	132° 34' 28,09"	2° 39' 7,11"
654	132° 39' 19,56"	2° 39' 6,60"
655	132° 39' 58,47"	2° 35' 25,90"
656	132° 35' 39,26"	2° 34' 51,63"
657	132° 35' 4,35"	2° 37' 47,37"
658	132° 29' 59,03"	2° 37' 50,05"
659	132° 27' 7,98"	2° 37' 41,05"
660	132° 26' 58,45"	2° 37' 8,68"
661	132° 26' 24,50"	2° 37' 27,42"
662	132° 25' 36,14"	2° 38' 0,81"
663	132° 25' 38,40"	2° 38' 8,47"
664	132° 26' 54,38"	2° 37' 45,21"
665	132° 26' 56,28"	2° 37' 44,63"

Titik Koordinat Batas Zona Pemanfaatan Terbatas
Subzona Perikanan Tradisional

Nomor Titik Peta	Koordinat	
	Bujur Timur (BT)	Lintang Selatan (LS)
632	132° 38' 51,67"	2° 41' 44,79"
633	132° 40' 49,00"	2° 30' 39,54"
634	132° 16' 39,57"	2° 27' 27,88"
635	132° 15' 50,29"	2° 32' 5,55"
636	132° 25' 17,32"	2° 38' 53,46"
637	132° 27' 40,11"	2° 40' 45,18"
639	132° 33' 0,00"	2° 39' 40,62"
640	132° 36' 10,19"	2° 40' 4,89"
641	132° 37' 45,80"	2° 40' 55,20"
642	132° 32' 42,60"	2° 39' 12,30"
643	132° 32' 42,60"	2° 39' 28,59"
644	132° 32' 58,77"	2° 39' 28,59"
645	132° 32' 58,76"	2° 39' 18,05"
647	132° 28' 15,68"	2° 37' 13,34"
648	132° 27' 57,28"	2° 37' 13,34"
651	132° 30' 29,92"	2° 39' 39,39"
652	132° 32' 16,78"	2° 38' 53,66"
653	132° 34' 28,09"	2° 39' 7,11"
654	132° 39' 19,56"	2° 39' 6,60"
655	132° 39' 58,47"	2° 35' 25,90"
656	132° 35' 39,26"	2° 34' 51,63"
657	132° 35' 4,35"	2° 37' 47,37"
662	132° 25' 36,14"	2° 38' 0,81"
663	132° 25' 38,40"	2° 38' 8,47"
1142	132° 30' 2,88"	2° 37' 49,86"
1143	132° 24' 8,92"	2° 35' 42,13"
1144	132° 23' 44,99"	2° 36' 6,36"
1145	132° 27' 23,78"	2° 39' 46,76"
1146	132° 27' 38,03"	2° 40' 7,87"
1147	132° 28' 18,02"	2° 40' 10,54"

Titik Koordinat Batas Zona Pemanfaatan Terbatas
Subzona Perlindungan Danau Air Asin

Nomor Titik Peta	Koordinat	
	Bujur Timur (BT)	Lintang Selatan (LS)
666	132° 24' 20,61"	2° 36' 9,33"
667	132° 24' 19,89"	2° 36' 9,88"
668	132° 24' 19,55"	2° 36' 11,14"
669	132° 24' 20,98"	2° 36' 12,00"

Nomor Titik Peta	Koordinat	
	Bujur Timur (BT)	Lintang Selatan (LS)
670	132° 24' 22,15"	2° 36' 11,07"
671	132° 24' 22,05"	2° 36' 9,74"

Titik Koordinat Batas Zona Pemanfaatan Terbatas
Subzona Perlindungan Pulau Kecil

Nomor Titik Peta	Koordinat	
	Bujur Timur (BT)	Lintang Selatan (LS)
672	132° 32' 33,54"	2° 39' 18,75"
673	132° 32' 34,15"	2° 39' 20,27"
674	132° 32' 34,92"	2° 39' 18,80"
675	132° 32' 34,32"	2° 39' 17,29"
676	132° 33' 9,41"	2° 39' 5,72"
677	132° 33' 10,67"	2° 39' 6,68"
678	132° 33' 13,19"	2° 39' 3,36"
679	132° 33' 12,02"	2° 39' 2,09"
680	132° 33' 10,20"	2° 39' 2,99"
681	132° 33' 23,66"	2° 39' 34,33"
682	132° 33' 24,70"	2° 39' 36,91"
683	132° 33' 25,33"	2° 39' 32,81"
684	132° 33' 23,62"	2° 39' 30,94"
685	132° 33' 47,02"	2° 39' 22,71"
686	132° 33' 47,24"	2° 39' 23,91"
687	132° 33' 48,22"	2° 39' 23,18"
688	132° 33' 48,01"	2° 39' 21,81"
689	132° 33' 51,46"	2° 38' 58,98"
690	132° 33' 54,61"	2° 39' 2,06"
691	132° 33' 55,02"	2° 39' 1,03"
692	132° 33' 53,92"	2° 38' 57,51"
693	132° 33' 52,86"	2° 38' 56,52"
694	132° 33' 55,60"	2° 39' 2,77"
695	132° 33' 56,56"	2° 39' 3,32"
696	132° 33' 57,18"	2° 39' 3,32"
697	132° 33' 57,35"	2° 39' 2,57"
698	132° 33' 56,25"	2° 39' 2,23"
699	132° 34' 3,24"	2° 39' 14,29"
700	132° 34' 4,26"	2° 39' 15,15"
701	132° 34' 5,80"	2° 39' 13,39"
702	132° 34' 4,22"	2° 39' 12,45"
703	132° 34' 3,24"	2° 39' 13,56"
704	132° 34' 6,36"	2° 39' 24,93"
705	132° 34' 7,94"	2° 39' 25,92"

Nomor Titik Peta	Koordinat	
	Bujur Timur (BT)	Lintang Selatan (LS)
706	132° 34' 7,99"	2° 39' 24,25"
707	132° 34' 6,92"	2° 39' 23,65"
708	132° 34' 21,92"	2° 39' 10,33"
709	132° 34' 21,40"	2° 39' 12,55"
710	132° 34' 22,94"	2° 39' 11,78"
711	132° 34' 23,63"	2° 39' 9,39"
712	132° 34' 29,45"	2° 38' 55,24"
713	132° 34' 31,88"	2° 38' 54,13"
714	132° 34' 32,40"	2° 38' 52,04"
715	132° 34' 29,92"	2° 38' 50,16"
716	132° 34' 28,76"	2° 38' 50,97"
717	132° 34' 1,86"	2° 38' 40,27"
718	132° 34' 2,30"	2° 38' 39,65"
719	132° 34' 1,81"	2° 38' 39,11"
720	132° 34' 1,35"	2° 38' 39,77"
721	132° 33' 58,50"	2° 38' 37,27"
722	132° 33' 58,99"	2° 38' 36,65"
723	132° 33' 58,23"	2° 38' 36,41"
724	132° 33' 57,80"	2° 38' 36,96"
725	132° 32' 30,57"	2° 38' 35,11"
726	132° 32' 26,95"	2° 38' 37,33"
727	132° 32' 26,94"	2° 38' 41,38"
728	132° 32' 31,94"	2° 38' 43,15"
729	132° 32' 32,82"	2° 38' 36,95"
730	132° 32' 30,92"	2° 38' 46,67"
731	132° 32' 29,70"	2° 38' 49,61"
732	132° 32' 31,82"	2° 38' 49,58"
733	132° 32' 32,81"	2° 38' 48,28"
734	132° 32' 33,35"	2° 38' 50,89"
735	132° 32' 33,12"	2° 38' 51,42"
736	132° 32' 34,00"	2° 38' 52,14"
737	132° 32' 34,02"	2° 38' 51,10"
738	132° 31' 54,79"	2° 38' 57,66"
739	132° 31' 53,84"	2° 38' 56,38"
740	132° 31' 52,93"	2° 38' 57,13"
741	132° 31' 53,69"	2° 38' 58,10"
742	132° 31' 47,59"	2° 38' 49,73"
743	132° 31' 40,88"	2° 38' 49,27"
744	132° 31' 22,33"	2° 38' 52,98"
745	132° 31' 32,40"	2° 38' 58,96"
746	132° 31' 33,95"	2° 38' 59,19"
747	132° 31' 35,86"	2° 38' 57,96"

Nomor Titik Peta	Koordinat	
	Bujur Timur (BT)	Lintang Selatan (LS)
748	132° 31' 18,45"	2° 38' 39,28"
749	132° 31' 25,11"	2° 38' 34,11"
750	132° 31' 25,62"	2° 38' 32,36"
751	132° 31' 25,04"	2° 38' 30,75"
752	132° 31' 17,60"	2° 38' 30,65"
753	132° 31' 12,84"	2° 38' 35,36"
754	132° 31' 10,65"	2° 38' 28,90"
755	132° 31' 12,47"	2° 38' 29,79"
756	132° 31' 13,03"	2° 38' 28,91"
757	132° 31' 11,13"	2° 38' 28,62"
758	132° 31' 9,23"	2° 38' 28,94"
759	132° 31' 6,98"	2° 38' 26,98"
760	132° 31' 4,32"	2° 38' 27,49"
761	132° 31' 5,99"	2° 38' 29,31"
762	132° 31' 8,70"	2° 38' 29,74"
763	132° 30' 59,33"	2° 38' 28,09"
764	132° 30' 59,19"	2° 38' 27,44"
765	132° 30' 58,48"	2° 38' 27,25"
766	132° 30' 57,56"	2° 38' 27,77"
767	132° 30' 57,89"	2° 38' 28,72"
768	132° 30' 49,18"	2° 38' 25,41"
769	132° 30' 50,22"	2° 38' 24,37"
770	132° 30' 49,75"	2° 38' 23,47"
771	132° 30' 48,32"	2° 38' 24,73"
772	132° 30' 47,89"	2° 38' 26,14"
773	132° 30' 46,98"	2° 38' 27,70"
774	132° 30' 47,48"	2° 38' 28,99"
775	132° 30' 48,56"	2° 38' 28,25"
776	132° 30' 42,55"	2° 38' 25,87"
777	132° 30' 41,18"	2° 38' 25,47"
778	132° 30' 40,38"	2° 38' 25,87"
779	132° 30' 41,18"	2° 38' 26,81"
780	132° 30' 41,73"	2° 38' 34,07"
781	132° 30' 41,02"	2° 38' 34,86"
782	132° 30' 41,95"	2° 38' 35,40"
783	132° 30' 43,13"	2° 38' 34,79"
784	132° 30' 41,77"	2° 38' 43,35"
785	132° 30' 39,98"	2° 38' 45,17"
786	132° 30' 39,57"	2° 38' 47,88"
787	132° 30' 42,56"	2° 38' 49,92"
788	132° 30' 43,80"	2° 38' 47,43"
789	132° 30' 46,08"	2° 38' 37,75"

Nomor Titik Peta	Koordinat	
	Bujur Timur (BT)	Lintang Selatan (LS)
790	132° 30' 47,86"	2° 38' 41,92"
791	132° 30' 51,70"	2° 38' 43,99"
792	132° 30' 53,87"	2° 38' 40,98"
793	132° 30' 48,83"	2° 38' 35,93"
794	132° 30' 49,41"	2° 38' 34,28"
795	132° 30' 50,64"	2° 38' 33,20"
796	132° 30' 49,56"	2° 38' 31,75"
797	132° 30' 48,56"	2° 38' 32,28"
798	132° 30' 56,43"	2° 38' 36,68"
799	132° 30' 57,67"	2° 38' 34,65"
800	132° 30' 56,84"	2° 38' 34,21"
801	132° 30' 55,43"	2° 38' 34,97"
802	132° 30' 57,84"	2° 38' 47,52"
803	132° 31' 2,75"	2° 38' 44,41"
804	132° 31' 3,43"	2° 38' 37,05"
805	132° 31' 2,09"	2° 38' 32,77"
806	132° 30' 59,50"	2° 38' 37,02"
807	132° 30' 57,80"	2° 38' 42,47"
808	132° 31' 8,76"	2° 38' 38,41"
809	132° 31' 9,21"	2° 38' 36,64"
810	132° 31' 8,00"	2° 38' 34,58"
811	132° 31' 6,73"	2° 38' 34,63"
812	132° 31' 6,07"	2° 38' 36,56"
813	132° 30' 25,14"	2° 38' 10,63"
814	132° 30' 25,82"	2° 38' 8,96"
815	132° 30' 25,07"	2° 38' 7,95"
816	132° 30' 24,18"	2° 38' 8,30"
817	132° 30' 24,11"	2° 38' 9,43"
818	132° 30' 18,66"	2° 38' 2,55"
819	132° 30' 14,31"	2° 38' 1,97"
820	132° 30' 10,65"	2° 38' 3,87"
821	132° 30' 15,80"	2° 38' 6,06"
822	132° 29' 44,64"	2° 37' 58,32"
823	132° 29' 45,65"	2° 37' 57,24"
824	132° 29' 44,23"	2° 37' 55,83"
825	132° 29' 43,11"	2° 37' 56,44"
826	132° 29' 27,23"	2° 37' 54,70"
827	132° 29' 28,42"	2° 37' 53,46"
828	132° 29' 27,61"	2° 37' 52,30"
829	132° 29' 26,28"	2° 37' 53,14"
830	132° 29' 9,33"	2° 37' 46,24"
831	132° 29' 10,16"	2° 37' 43,38"

Nomor Titik Peta	Koordinat	
	Bujur Timur (BT)	Lintang Selatan (LS)
832	132° 29' 7,90"	2° 37' 41,28"
833	132° 29' 7,39"	2° 37' 43,92"
834	132° 29' 3,49"	2° 37' 43,60"
835	132° 29' 5,38"	2° 37' 40,00"
836	132° 29' 4,50"	2° 37' 37,61"
837	132° 28' 58,57"	2° 37' 38,43"
838	132° 28' 58,50"	2° 37' 41,72"
839	132° 29' 0,72"	2° 37' 42,34"
840	132° 28' 56,12"	2° 37' 32,71"
841	132° 28' 58,52"	2° 37' 29,02"
842	132° 28' 57,49"	2° 37' 28,65"
843	132° 28' 52,56"	2° 37' 31,49"
844	132° 28' 51,03"	2° 37' 33,89"
845	132° 28' 55,01"	2° 37' 43,23"
846	132° 28' 56,75"	2° 37' 42,67"
847	132° 28' 57,14"	2° 37' 41,38"
848	132° 28' 56,59"	2° 37' 40,62"
849	132° 28' 54,90"	2° 37' 41,53"
850	132° 28' 57,16"	2° 37' 50,84"
851	132° 28' 55,11"	2° 37' 51,74"
852	132° 28' 55,59"	2° 37' 53,79"
853	132° 28' 57,36"	2° 37' 52,62"
854	132° 28' 26,29"	2° 37' 45,30"
855	132° 28' 27,73"	2° 37' 43,76"
856	132° 28' 27,20"	2° 37' 41,74"
857	132° 28' 24,73"	2° 37' 42,73"
858	132° 27' 57,00"	2° 38' 6,47"
859	132° 27' 58,70"	2° 38' 5,38"
860	132° 27' 57,90"	2° 38' 5,06"
861	132° 27' 56,40"	2° 38' 5,70"
862	132° 27' 47,83"	2° 37' 33,86"
863	132° 27' 49,68"	2° 37' 31,52"
864	132° 27' 44,90"	2° 37' 20,15"
865	132° 27' 42,04"	2° 37' 18,71"
866	132° 27' 34,00"	2° 37' 20,99"
867	132° 27' 35,08"	2° 37' 27,08"
868	132° 27' 40,90"	2° 37' 32,54"
869	132° 27' 37,11"	2° 37' 17,84"
870	132° 27' 36,87"	2° 37' 14,49"
871	132° 27' 33,44"	2° 37' 12,10"
872	132° 27' 32,14"	2° 37' 13,78"
873	132° 27' 35,92"	2° 37' 18,22"

Nomor Titik Peta	Koordinat	
	Bujur Timur (BT)	Lintang Selatan (LS)
874	132° 27' 32,92"	2° 37' 10,55"
875	132° 27' 33,53"	2° 37' 8,82"
876	132° 27' 30,49"	2° 37' 6,88"
877	132° 27' 29,26"	2° 37' 8,72"
878	132° 26' 56,61"	2° 37' 15,26"
879	132° 26' 55,38"	2° 37' 13,70"
880	132° 26' 53,54"	2° 37' 13,29"
881	132° 26' 54,50"	2° 37' 14,95"
882	132° 26' 50,80"	2° 37' 10,26"
883	132° 26' 43,87"	2° 37' 5,74"
884	132° 26' 39,26"	2° 37' 7,83"
885	132° 26' 48,09"	2° 37' 13,14"
886	132° 26' 41,46"	2° 37' 3,12"
887	132° 26' 42,25"	2° 37' 2,48"
888	132° 26' 41,50"	2° 37' 1,97"
889	132° 26' 41,27"	2° 37' 2,31"
890	132° 26' 35,18"	2° 36' 57,80"
891	132° 26' 37,81"	2° 36' 57,47"
892	132° 26' 37,61"	2° 36' 55,24"
893	132° 26' 36,02"	2° 36' 53,74"
894	132° 26' 34,42"	2° 36' 53,84"
895	132° 26' 34,20"	2° 36' 57,23"
896	132° 26' 30,98"	2° 36' 53,31"
897	132° 26' 31,25"	2° 36' 53,23"
898	132° 26' 31,30"	2° 36' 52,89"
899	132° 26' 30,93"	2° 36' 52,87"
900	132° 26' 30,78"	2° 36' 53,06"
901	132° 26' 28,89"	2° 36' 54,64"
902	132° 26' 26,99"	2° 36' 54,45"
903	132° 26' 25,03"	2° 36' 56,71"
904	132° 26' 25,73"	2° 36' 58,67"
905	132° 26' 28,24"	2° 36' 58,48"
906	132° 26' 32,04"	2° 36' 58,15"
907	132° 26' 31,81"	2° 37' 0,18"
908	132° 26' 35,71"	2° 37' 2,09"
909	132° 26' 36,29"	2° 36' 59,34"
910	132° 26' 32,78"	2° 37' 3,10"
911	132° 26' 30,93"	2° 37' 4,88"
912	132° 26' 33,36"	2° 37' 7,05"
913	132° 26' 33,60"	2° 37' 3,92"
914	132° 26' 10,27"	2° 37' 3,94"
915	132° 26' 3,33"	2° 37' 1,92"

Nomor Titik Peta	Koordinat	
	Bujur Timur (BT)	Lintang Selatan (LS)
916	132° 25' 57,98"	2° 37' 4,49"
917	132° 25' 56,83"	2° 37' 10,96"
918	132° 26' 0,89"	2° 37' 15,88"
919	132° 26' 11,55"	2° 37' 11,70"
920	132° 25' 53,98"	2° 36' 58,68"
921	132° 25' 51,46"	2° 37' 1,05"
922	132° 25' 54,02"	2° 37' 6,01"
923	132° 25' 56,19"	2° 37' 4,28"
924	132° 25' 44,73"	2° 36' 59,79"
925	132° 25' 45,00"	2° 36' 57,37"
926	132° 25' 42,68"	2° 36' 57,02"
927	132° 25' 42,51"	2° 36' 58,73"
928	132° 25' 38,23"	2° 36' 57,02"
929	132° 25' 37,58"	2° 36' 56,34"
930	132° 25' 36,89"	2° 36' 56,79"
931	132° 25' 37,54"	2° 36' 57,47"
932	132° 25' 31,41"	2° 36' 59,45"
933	132° 25' 30,13"	2° 36' 58,06"
934	132° 25' 27,97"	2° 37' 1,32"
935	132° 25' 30,03"	2° 37' 2,48"
936	132° 25' 26,60"	2° 37' 2,57"
937	132° 25' 23,55"	2° 37' 5,41"
938	132° 25' 24,51"	2° 37' 7,24"
939	132° 25' 26,38"	2° 37' 7,21"
940	132° 25' 24,96"	2° 37' 11,41"
941	132° 25' 23,99"	2° 37' 12,48"
942	132° 25' 24,46"	2° 37' 14,15"
943	132° 25' 25,74"	2° 37' 13,11"
944	132° 25' 25,88"	2° 37' 11,73"
945	132° 25' 32,29"	2° 37' 14,36"
946	132° 25' 43,44"	2° 37' 15,64"
947	132° 25' 45,70"	2° 37' 11,63"
948	132° 25' 53,44"	2° 37' 8,82"
949	132° 25' 49,11"	2° 37' 2,65"
950	132° 25' 41,54"	2° 37' 2,02"
951	132° 25' 35,73"	2° 37' 2,59"
952	132° 25' 32,01"	2° 37' 7,44"
953	132° 25' 50,35"	2° 37' 12,99"
954	132° 25' 52,70"	2° 37' 15,57"
955	132° 25' 54,51"	2° 37' 11,92"
956	132° 25' 52,67"	2° 37' 11,21"
957	132° 24' 45,55"	2° 36' 19,14"

Nomor Titik Peta	Koordinat	
	Bujur Timur (BT)	Lintang Selatan (LS)
958	132° 24' 45,64"	2° 36' 15,96"
959	132° 24' 42,84"	2° 36' 14,07"
960	132° 24' 42,07"	2° 36' 16,07"
961	132° 24' 42,45"	2° 36' 17,29"
962	132° 24' 41,39"	2° 36' 18,80"
963	132° 24' 37,54"	2° 36' 6,24"
964	132° 24' 33,00"	2° 36' 3,84"
965	132° 24' 20,92"	2° 36' 5,54"
966	132° 24' 16,64"	2° 36' 5,41"
967	132° 24' 13,70"	2° 36' 14,81"
968	132° 24' 12,86"	2° 36' 23,08"
969	132° 24' 27,61"	2° 36' 30,17"
970	132° 24' 39,59"	2° 36' 26,41"
971	132° 24' 40,54"	2° 36' 22,65"
972	132° 24' 1,98"	2° 36' 2,93"
973	132° 24' 2,30"	2° 36' 2,50"
974	132° 24' 2,09"	2° 36' 2,11"
975	132° 24' 1,38"	2° 36' 1,99"
976	132° 24' 1,19"	2° 36' 2,52"
977	132° 24' 3,88"	2° 36' 15,79"
978	132° 24' 7,35"	2° 36' 11,10"
979	132° 24' 6,83"	2° 36' 8,33"
980	132° 24' 0,47"	2° 36' 8,90"
981	132° 23' 59,36"	2° 36' 9,38"
982	132° 24' 8,03"	2° 36' 18,32"
983	132° 24' 8,24"	2° 36' 18,34"
984	132° 24' 8,44"	2° 36' 17,85"
985	132° 24' 8,39"	2° 36' 17,64"
986	132° 24' 8,02"	2° 36' 18,06"
987	132° 25' 41,08"	2° 37' 42,20"
988	132° 25' 43,41"	2° 37' 41,49"
989	132° 25' 43,25"	2° 37' 36,39"
990	132° 25' 41,35"	2° 37' 38,62"
991	132° 25' 47,58"	2° 37' 36,53"
992	132° 25' 48,96"	2° 37' 36,10"
993	132° 25' 48,42"	2° 37' 34,39"
994	132° 25' 47,24"	2° 37' 35,18"
995	132° 25' 50,30"	2° 37' 44,12"
996	132° 25' 52,55"	2° 37' 45,01"
997	132° 25' 53,51"	2° 37' 43,98"
998	132° 25' 51,96"	2° 37' 43,18"
999	132° 25' 52,98"	2° 37' 42,33"

Nomor Titik Peta	Koordinat	
	Bujur Timur (BT)	Lintang Selatan (LS)
1000	132° 25' 54,09"	2° 37' 40,64"
1001	132° 25' 53,48"	2° 37' 39,52"
1002	132° 25' 52,54"	2° 37' 40,62"
1003	132° 25' 53,01"	2° 38' 0,08"
1004	132° 25' 53,74"	2° 38' 1,19"
1005	132° 25' 54,30"	2° 37' 59,86"
1006	132° 25' 54,07"	2° 37' 59,57"
1007	132° 26' 18,10"	2° 37' 45,96"
1008	132° 26' 19,01"	2° 37' 46,75"
1009	132° 26' 19,70"	2° 37' 45,48"
1010	132° 26' 18,95"	2° 37' 44,69"
1011	132° 26' 20,54"	2° 37' 50,62"
1012	132° 26' 21,70"	2° 37' 50,89"
1013	132° 26' 25,21"	2° 37' 49,06"
1014	132° 26' 25,82"	2° 37' 47,42"
1015	132° 26' 21,44"	2° 37' 46,86"
1016	132° 26' 26,41"	2° 37' 46,94"
1017	132° 26' 27,98"	2° 37' 46,48"
1018	132° 26' 28,05"	2° 37' 45,55"
1019	132° 26' 27,00"	2° 37' 44,72"
1020	132° 26' 25,96"	2° 37' 45,99"
1021	132° 26' 24,17"	2° 37' 43,71"
1022	132° 26' 25,12"	2° 37' 43,10"
1023	132° 26' 25,09"	2° 37' 42,31"
1024	132° 26' 24,29"	2° 37' 41,89"
1025	132° 26' 23,42"	2° 37' 42,35"
1026	132° 26' 23,48"	2° 37' 43,19"
1027	132° 26' 21,85"	2° 37' 40,24"
1028	132° 26' 24,72"	2° 37' 39,53"
1029	132° 26' 24,19"	2° 37' 38,56"
1030	132° 26' 22,20"	2° 37' 38,43"
1031	132° 26' 24,14"	2° 37' 36,86"
1032	132° 26' 24,90"	2° 37' 36,07"
1033	132° 26' 24,26"	2° 37' 35,02"
1034	132° 26' 23,43"	2° 37' 35,71"
1035	132° 26' 23,06"	2° 37' 33,27"
1036	132° 26' 23,65"	2° 37' 32,59"
1037	132° 26' 23,08"	2° 37' 31,88"
1038	132° 26' 22,45"	2° 37' 32,51"
1039	132° 26' 30,27"	2° 37' 33,85"
1040	132° 26' 31,98"	2° 37' 31,90"
1041	132° 26' 30,88"	2° 37' 30,38"

Nomor Titik Peta	Koordinat	
	Bujur Timur (BT)	Lintang Selatan (LS)
1042	132° 26' 29,38"	2° 37' 31,86"
1043	132° 26' 48,23"	2° 37' 33,04"
1044	132° 26' 50,20"	2° 37' 35,64"
1045	132° 26' 50,99"	2° 37' 33,65"
1046	132° 26' 49,66"	2° 37' 31,87"
1047	132° 26' 53,67"	2° 37' 43,10"
1048	132° 26' 54,71"	2° 37' 42,44"
1049	132° 26' 55,93"	2° 37' 45,51"
1050	132° 27' 28,71"	2° 37' 47,67"
1051	132° 27' 32,16"	2° 37' 50,59"
1052	132° 27' 35,61"	2° 37' 50,05"
1053	132° 27' 35,74"	2° 37' 48,07"
1054	132° 27' 30,29"	2° 37' 43,93"
1055	132° 27' 36,08"	2° 37' 50,62"
1056	132° 27' 36,99"	2° 37' 51,36"
1057	132° 27' 37,09"	2° 37' 50,71"
1058	132° 27' 36,30"	2° 37' 50,06"
1059	132° 27' 26,29"	2° 38' 2,99"
1060	132° 27' 23,41"	2° 38' 1,66"
1061	132° 27' 19,56"	2° 38' 4,99"
1062	132° 27' 23,36"	2° 38' 7,09"
1063	132° 27' 25,78"	2° 38' 5,50"
1064	132° 27' 20,81"	2° 38' 8,37"
1065	132° 27' 18,62"	2° 38' 10,62"
1066	132° 27' 20,48"	2° 38' 12,40"
1067	132° 27' 21,07"	2° 38' 10,52"
1068	132° 27' 23,56"	2° 38' 12,54"
1069	132° 27' 24,79"	2° 38' 15,21"
1070	132° 27' 30,70"	2° 38' 10,28"
1071	132° 27' 30,96"	2° 38' 7,97"
1072	132° 27' 28,13"	2° 38' 8,27"
1073	132° 27' 28,91"	2° 38' 20,52"
1074	132° 27' 30,50"	2° 38' 22,38"
1075	132° 27' 34,35"	2° 38' 19,86"
1076	132° 27' 32,96"	2° 38' 17,55"
1077	132° 27' 38,00"	2° 38' 44,17"
1078	132° 27' 35,02"	2° 38' 42,12"
1079	132° 27' 34,45"	2° 38' 43,81"
1080	132° 27' 35,53"	2° 38' 45,09"
1081	132° 27' 31,27"	2° 38' 41,20"
1082	132° 27' 32,09"	2° 38' 38,99"
1083	132° 27' 30,91"	2° 38' 38,73"

Nomor Titik Peta	Koordinat	
	Bujur Timur (BT)	Lintang Selatan (LS)
1084	132° 27' 30,14"	2° 38' 40,12"
1085	132° 27' 22,99"	2° 38' 35,55"
1086	132° 27' 21,53"	2° 38' 33,19"
1087	132° 27' 20,49"	2° 38' 33,33"
1088	132° 27' 19,90"	2° 38' 35,19"
1089	132° 27' 19,97"	2° 38' 36,69"
1090	132° 27' 21,43"	2° 38' 36,87"
1091	132° 27' 15,17"	2° 38' 26,30"
1092	132° 27' 10,08"	2° 38' 26,79"
1093	132° 27' 8,67"	2° 38' 26,88"
1094	132° 27' 4,53"	2° 38' 29,67"
1095	132° 27' 9,12"	2° 38' 37,05"
1096	132° 27' 15,43"	2° 38' 33,42"
1097	132° 27' 1,83"	2° 38' 46,05"
1098	132° 26' 59,04"	2° 38' 46,89"
1099	132° 26' 59,08"	2° 38' 47,98"
1100	132° 27' 1,34"	2° 38' 47,81"
1101	132° 26' 59,81"	2° 38' 45,02"
1102	132° 26' 59,70"	2° 38' 36,58"
1103	132° 26' 58,17"	2° 38' 31,96"
1104	132° 26' 55,22"	2° 38' 32,16"
1105	132° 26' 52,64"	2° 38' 35,68"
1106	132° 26' 50,77"	2° 38' 43,68"
1107	132° 26' 54,95"	2° 38' 46,26"
1108	132° 26' 50,25"	2° 38' 38,57"
1109	132° 26' 52,15"	2° 38' 34,95"
1110	132° 26' 54,11"	2° 38' 28,16"
1111	132° 26' 54,01"	2° 38' 26,21"
1112	132° 26' 44,75"	2° 38' 11,18"
1113	132° 26' 39,95"	2° 38' 11,02"
1114	132° 26' 35,45"	2° 38' 14,90"
1115	132° 26' 31,60"	2° 38' 20,51"
1116	132° 26' 33,24"	2° 38' 43,00"
1117	132° 26' 35,09"	2° 38' 50,68"
1118	132° 26' 28,12"	2° 38' 26,71"
1119	132° 26' 28,01"	2° 38' 28,35"
1120	132° 26' 29,51"	2° 38' 28,87"
1121	132° 26' 30,04"	2° 38' 28,12"
1122	132° 26' 31,70"	2° 38' 46,21"
1123	132° 26' 30,27"	2° 38' 49,47"
1124	132° 26' 31,33"	2° 38' 51,18"
1125	132° 26' 34,01"	2° 38' 47,74"

Nomor Titik Peta	Koordinat	
	Bujur Timur (BT)	Lintang Selatan (LS)
1126	132° 27' 5,50"	2° 38' 58,84"
1127	132° 27' 6,77"	2° 38' 56,17"
1128	132° 27' 6,83"	2° 38' 54,95"
1129	132° 27' 4,52"	2° 38' 57,75"
1130	132° 27' 6,20"	2° 39' 2,78"
1131	132° 27' 3,01"	2° 39' 3,96"
1132	132° 27' 2,55"	2° 39' 8,08"
1133	132° 27' 7,31"	2° 39' 4,88"
1134	132° 27' 28,18"	2° 39' 39,31"
1135	132° 27' 27,53"	2° 39' 39,42"
1136	132° 27' 27,88"	2° 39' 41,70"
1137	132° 27' 28,76"	2° 39' 40,81"
1138	132° 27' 27,05"	2° 40' 11,64"
1139	132° 27' 28,98"	2° 40' 12,37"
1140	132° 27' 29,89"	2° 40' 11,11"
1141	132° 27' 28,68"	2° 40' 10,46"

Titik Koordinat Batas Zona Lainnya
Subzona Kerakera

Nomor Titik Peta	Koordinat	
	Bujur Timur (BT)	Lintang Selatan (LS)
638	132° 28' 57,12"	2° 39' 37,23"
646	132° 28' 15,68"	2° 37' 28,24"
647	132° 28' 15,68"	2° 37' 13,34"
648	132° 27' 57,28"	2° 37' 13,34"
649	132° 27' 57,58"	2° 37' 25,53"
650	132° 28' 56,87"	2° 39' 31,92"
658	132° 29' 59,03"	2° 37' 50,05"
659	132° 27' 7,98"	2° 37' 41,05"
660	132° 26' 58,45"	2° 37' 8,68"
661	132° 26' 24,50"	2° 37' 27,42"
662	132° 25' 36,14"	2° 38' 0,81"
663	132° 25' 38,40"	2° 38' 8,47"
664	132° 26' 54,38"	2° 37' 45,21"
665	132° 26' 56,28"	2° 37' 44,63"
1142	132° 30' 2,88"	2° 37' 49,86"
1143	132° 24' 8,92"	2° 35' 42,13"
1144	132° 23' 44,99"	2° 36' 6,36"
1145	132° 27' 23,78"	2° 39' 46,76"
1146	132° 27' 38,03"	2° 40' 7,87"
1147	132° 28' 18,02"	2° 40' 10,54"

Area III. Teluk Berau
Titik Koordinat Batas Terluar Kawasan

Nomor Titik Peta	Koordinat	
	Bujur Timur (BT)	Lintang Selatan (LS)
1148	132° 26' 19,49"	2° 41' 58,84"
1149	132° 26' 21,01"	2° 41' 57,45"
1150	132° 26' 20,97"	2° 41' 52,29"
1151	132° 26' 24,44"	2° 41' 52,32"
1152	132° 26' 24,44"	2° 41' 41,91"
1153	132° 26' 38,02"	2° 41' 41,91"
1154	132° 27' 28,08"	2° 40' 56,17"
1155	132° 25' 8,79"	2° 39' 4,84"
1156	132° 15' 47,17"	2° 32' 23,12"
1157	132° 14' 31,51"	2° 39' 29,49"
1158	132° 19' 24,42"	2° 39' 41,03"
1159	132° 19' 22,80"	2° 39' 42,62"
1160	132° 19' 24,89"	2° 39' 44,50"
1161	132° 19' 27,08"	2° 39' 42,12"
1162	132° 20' 19,84"	2° 39' 54,87"
1163	132° 20' 28,64"	2° 40' 4,47"
1164	132° 20' 28,58"	2° 39' 54,84"
1165	132° 20' 30,81"	2° 39' 59,44"
1166	132° 20' 46,68"	2° 40' 0,15"
1167	132° 20' 42,97"	2° 40' 31,29"
1168	132° 20' 55,29"	2° 40' 41,09"
1169	132° 21' 0,45"	2° 40' 18,66"
1170	132° 20' 57,17"	2° 40' 9,86"
1171	132° 21' 17,17"	2° 40' 8,32"
1172	132° 21' 12,66"	2° 40' 9,18"
1173	132° 21' 13,08"	2° 40' 13,26"
1174	132° 21' 17,47"	2° 40' 12,83"
1175	132° 21' 46,92"	2° 40' 29,15"
1176	132° 21' 40,11"	2° 40' 26,06"
1177	132° 21' 44,79"	2° 40' 34,17"
1178	132° 21' 48,31"	2° 40' 30,92"
1179	132° 21' 59,18"	2° 40' 43,14"
1180	132° 21' 59,00"	2° 40' 46,31"
1181	132° 22' 1,48"	2° 40' 46,41"
1182	132° 22' 1,57"	2° 40' 41,19"
1183	132° 24' 5,61"	2° 41' 6,28"
1184	132° 24' 0,77"	2° 41' 10,83"
1185	132° 24' 1,70"	2° 41' 17,17"
1186	132° 24' 22,54"	2° 41' 23,69"
1187	132° 24' 33,11"	2° 41' 13,14"

Nomor Titik Peta	Koordinat	
	Bujur Timur (BT)	Lintang Selatan (LS)
1188	132° 24' 32,68"	2° 41' 3,59"
1189	132° 24' 26,47"	2° 41' 0,32"
1190	132° 24' 36,33"	2° 40' 51,46"
1191	132° 24' 33,51"	2° 40' 52,71"
1192	132° 24' 33,88"	2° 41' 1,48"
1193	132° 24' 40,79"	2° 41' 4,29"
1194	132° 24' 47,40"	2° 41' 4,05"
1195	132° 24' 50,56"	2° 41' 0,43"
1196	132° 24' 45,91"	2° 40' 56,11"
1197	132° 24' 52,75"	2° 40' 57,28"
1198	132° 24' 53,53"	2° 41' 1,42"
1199	132° 25' 2,24"	2° 40' 58,64"
1200	132° 25' 2,17"	2° 40' 57,11"
1201	132° 25' 29,25"	2° 40' 37,41"
1202	132° 25' 22,87"	2° 40' 39,43"
1203	132° 25' 24,69"	2° 40' 46,37"
1204	132° 25' 29,59"	2° 40' 41,83"
1205	132° 25' 38,98"	2° 40' 37,37"
1206	132° 25' 36,84"	2° 40' 39,32"
1207	132° 25' 37,79"	2° 40' 42,07"
1208	132° 25' 40,39"	2° 40' 40,88"
1209	132° 26' 1,94"	2° 40' 42,38"
1210	132° 26' 7,43"	2° 40' 51,67"
1211	132° 26' 10,58"	2° 40' 51,85"
1212	132° 25' 4,69"	2° 41' 37,27"
1213	132° 24' 56,89"	2° 41' 37,18"
1214	132° 24' 51,77"	2° 41' 41,67"
1215	132° 24' 36,47"	2° 41' 37,59"
1216	132° 24' 36,98"	2° 41' 47,04"
1217	132° 25' 8,44"	2° 41' 56,42"
1218	132° 25' 18,95"	2° 41' 55,60"
1219	132° 25' 18,97"	2° 41' 52,13"

Titik Koordinat Batas Zona Pemanfaatan Terbatas
Subzona Wisata

Nomor Titik Peta	Koordinat	
	Bujur Timur (BT)	Lintang Selatan (LS)
1183	132° 24' 5,61"	2° 41' 6,28"
1184	132° 24' 0,77"	2° 41' 10,83"
1185	132° 24' 1,70"	2° 41' 17,17"
1186	132° 24' 22,54"	2° 41' 23,69"

Nomor Titik Peta	Koordinat	
	Bujur Timur (BT)	Lintang Selatan (LS)
1187	132° 24' 33,11"	2° 41' 13,14"
1188	132° 24' 32,68"	2° 41' 3,59"
1189	132° 24' 26,47"	2° 41' 0,32"
1190	132° 24' 36,33"	2° 40' 51,46"
1191	132° 24' 33,51"	2° 40' 52,71"
1192	132° 24' 33,88"	2° 41' 1,48"
1193	132° 24' 40,79"	2° 41' 4,29"
1194	132° 24' 47,40"	2° 41' 4,05"
1195	132° 24' 50,56"	2° 41' 0,43"
1196	132° 24' 45,91"	2° 40' 56,11"
1197	132° 24' 52,75"	2° 40' 57,28"
1198	132° 24' 53,53"	2° 41' 1,42"
1199	132° 25' 2,24"	2° 40' 58,64"
1200	132° 25' 2,17"	2° 40' 57,11"
1201	132° 25' 29,25"	2° 40' 37,41"
1202	132° 25' 22,87"	2° 40' 39,43"
1203	132° 25' 24,69"	2° 40' 46,37"
1204	132° 25' 29,59"	2° 40' 41,83"
1205	132° 25' 38,98"	2° 40' 37,37"
1206	132° 25' 36,84"	2° 40' 39,32"
1207	132° 25' 37,79"	2° 40' 42,07"
1208	132° 25' 40,39"	2° 40' 40,88"
1220	132° 25' 48,19"	2° 40' 33,30"
1221	132° 25' 48,13"	2° 39' 40,05"
1222	132° 22' 43,85"	2° 39' 34,17"
1223	132° 22' 31,08"	2° 40' 45,90"

Titik Koordinat Batas Zona Pemanfaatan Terbatas
Subzona Perikanan Tradisional

Nomor Titik Peta	Koordinat	
	Bujur Timur (BT)	Lintang Selatan (LS)
1148	132° 26' 19,49"	2° 41' 58,84"
1149	132° 26' 21,01"	2° 41' 57,45"
1150	132° 26' 20,97"	2° 41' 52,29"
1151	132° 26' 24,44"	2° 41' 52,32"
1152	132° 26' 24,44"	2° 41' 41,91"
1153	132° 26' 38,02"	2° 41' 41,91"
1154	132° 27' 28,08"	2° 40' 56,17"
1155	132° 25' 8,79"	2° 39' 4,84"
1156	132° 15' 47,17"	2° 32' 23,12"
1157	132° 14' 31,51"	2° 39' 29,49"

Nomor Titik Peta	Koordinat	
	Bujur Timur (BT)	Lintang Selatan (LS)
1158	132° 19' 24,42"	2° 39' 41,03"
1159	132° 19' 22,80"	2° 39' 42,62"
1160	132° 19' 24,89"	2° 39' 44,50"
1161	132° 19' 27,08"	2° 39' 42,12"
1162	132° 20' 19,84"	2° 39' 54,87"
1163	132° 20' 28,64"	2° 40' 4,47"
1164	132° 20' 28,58"	2° 39' 54,84"
1165	132° 20' 30,81"	2° 39' 59,44"
1166	132° 20' 46,68"	2° 40' 0,15"
1167	132° 20' 42,97"	2° 40' 31,29"
1168	132° 20' 55,29"	2° 40' 41,09"
1169	132° 21' 0,45"	2° 40' 18,66"
1170	132° 20' 57,17"	2° 40' 9,86"
1171	132° 21' 17,17"	2° 40' 8,32"
1172	132° 21' 12,66"	2° 40' 9,18"
1173	132° 21' 13,08"	2° 40' 13,26"
1174	132° 21' 17,47"	2° 40' 12,83"
1175	132° 21' 46,92"	2° 40' 29,15"
1176	132° 21' 40,11"	2° 40' 26,06"
1177	132° 21' 44,79"	2° 40' 34,17"
1178	132° 21' 48,31"	2° 40' 30,92"
1179	132° 21' 59,18"	2° 40' 43,14"
1180	132° 21' 59,00"	2° 40' 46,31"
1181	132° 22' 1,48"	2° 40' 46,41"
1182	132° 22' 1,57"	2° 40' 41,19"
1209	132° 26' 1,94"	2° 40' 42,38"
1210	132° 26' 7,43"	2° 40' 51,67"
1211	132° 26' 10,58"	2° 40' 51,85"
1212	132° 25' 4,69"	2° 41' 37,27"
1213	132° 24' 56,89"	2° 41' 37,18"
1214	132° 24' 51,77"	2° 41' 41,67"
1215	132° 24' 36,47"	2° 41' 37,59"
1216	132° 24' 36,98"	2° 41' 47,04"
1217	132° 25' 8,44"	2° 41' 56,42"
1218	132° 25' 18,95"	2° 41' 55,60"
1219	132° 25' 18,97"	2° 41' 52,13"
1220	132° 25' 48,19"	2° 40' 33,30"
1221	132° 25' 48,13"	2° 39' 40,05"
1222	132° 22' 43,85"	2° 39' 34,17"
1223	132° 22' 31,08"	2° 40' 45,90"

Titik Koordinat Batas Zona Pemanfaatan Terbatas
Subzona Perlindungan Danau Air Asin

Nomor Titik Peta	Koordinat	
	Bujur Timur (BT)	Lintang Selatan (LS)
1224	132° 25' 22,91"	2° 41' 23,06"
1225	132° 25' 25,30"	2° 41' 24,59"
1226	132° 25' 24,06"	2° 41' 28,66"
1227	132° 25' 21,29"	2° 41' 29,68"
1228	132° 25' 16,96"	2° 41' 28,83"
1229	132° 25' 20,64"	2° 41' 26,26"
1230	132° 25' 20,98"	2° 41' 23,57"

Titik Koordinat Batas Zona Pemanfaatan Terbatas
Subzona Perlindungan Pulau Kecil

Nomor Titik Peta	Koordinat	
	Bujur Timur (BT)	Lintang Selatan (LS)
1231	132° 25' 56,49"	2° 41' 54,73"
1232	132° 25' 55,77"	2° 41' 56,22"
1233	132° 25' 57,26"	2° 41' 58,07"
1234	132° 25' 58,52"	2° 41' 56,90"
1235	132° 26' 27,34"	2° 40' 54,04"
1236	132° 26' 26,44"	2° 40' 53,65"
1237	132° 26' 24,61"	2° 40' 55,16"
1238	132° 26' 25,60"	2° 40' 55,60"
1239	132° 26' 20,20"	2° 40' 48,07"
1240	132° 26' 21,76"	2° 40' 46,13"
1241	132° 26' 21,28"	2° 40' 44,71"
1242	132° 26' 19,88"	2° 40' 44,07"
1243	132° 26' 17,39"	2° 40' 45,99"
1244	132° 25' 45,00"	2° 40' 31,10"
1245	132° 25' 42,78"	2° 40' 28,97"
1246	132° 25' 41,90"	2° 40' 29,64"
1247	132° 25' 42,61"	2° 40' 33,09"
1248	132° 25' 44,05"	2° 40' 33,42"
1249	132° 25' 3,42"	2° 40' 39,31"
1250	132° 25' 2,85"	2° 40' 38,92"
1251	132° 25' 2,32"	2° 40' 39,26"
1252	132° 25' 2,91"	2° 40' 39,65"
1253	132° 24' 48,20"	2° 40' 50,78"
1254	132° 24' 47,71"	2° 40' 50,37"
1255	132° 24' 46,87"	2° 40' 51,18"
1256	132° 24' 47,38"	2° 40' 51,61"
1257	132° 24' 16,65"	2° 40' 59,59"
1258	132° 24' 14,43"	2° 40' 58,27"

Nomor Titik Peta	Koordinat	
	Bujur Timur (BT)	Lintang Selatan (LS)
1259	132° 24' 15,47"	2° 41' 1,48"
1260	132° 24' 18,00"	2° 41' 3,63"
1261	132° 22' 0,18"	2° 40' 32,58"
1262	132° 21' 57,75"	2° 40' 28,23"
1263	132° 21' 57,44"	2° 40' 32,08"
1264	132° 21' 58,01"	2° 40' 35,11"
1265	132° 21' 41,78"	2° 40' 7,94"
1266	132° 21' 42,47"	2° 40' 6,75"
1267	132° 21' 41,93"	2° 40' 6,24"
1268	132° 21' 41,47"	2° 40' 6,57"
1269	132° 21' 31,81"	2° 40' 8,70"
1270	132° 21' 31,54"	2° 40' 8,33"
1271	132° 21' 31,19"	2° 40' 8,65"
1272	132° 21' 31,45"	2° 40' 9,12"
1273	132° 21' 31,10"	2° 40' 4,34"
1274	132° 21' 29,98"	2° 40' 3,52"
1275	132° 21' 29,64"	2° 40' 3,82"
1276	132° 21' 30,53"	2° 40' 4,95"
1277	132° 21' 23,41"	2° 40' 1,50"
1278	132° 21' 19,67"	2° 39' 59,34"
1279	132° 21' 17,61"	2° 40' 0,57"
1280	132° 21' 20,68"	2° 40' 5,90"
1281	132° 20' 52,09"	2° 39' 53,09"
1282	132° 20' 51,31"	2° 39' 52,20"
1283	132° 20' 50,63"	2° 39' 53,14"
1284	132° 20' 51,48"	2° 39' 54,22"
1285	132° 19' 36,42"	2° 39' 34,99"
1286	132° 19' 35,59"	2° 39' 34,00"
1287	132° 19' 35,04"	2° 39' 35,18"
1288	132° 19' 35,46"	2° 39' 36,55"

Area IV. Teluk Nusalasi-Van Den Bosch
Titik Koordinat Batas Terluar Kawasan

Nomor Titik Peta	Koordinat	
	Bujur Timur (BT)	Lintang Selatan (LS)
1289	132° 39' 31,87"	3° 18' 29,45"
1290	132° 26' 11,52"	3° 22' 5,32"
1291	132° 26' 25,04"	3° 28' 36,80"
1292	132° 32' 1,94"	3° 37' 41,09"
1293	132° 33' 47,77"	3° 50' 48,59"
1294	132° 36' 39,47"	3° 57' 31,22"
1295	132° 37' 35,22"	4° 1' 34,18"
1296	132° 50' 12,34"	3° 58' 9,89"
1297	132° 50' 13,72"	3° 38' 26,06"
1298	132° 50' 23,40"	3° 38' 34,73"
1299	132° 50' 23,77"	3° 38' 27,15"
1300	132° 51' 10,74"	3° 38' 29,47"
1301	132° 51' 10,17"	3° 38' 32,72"
1302	132° 51' 15,59"	3° 38' 34,26"
1303	132° 51' 16,41"	3° 38' 29,73"
1304	132° 51' 20,84"	3° 38' 30,19"
1305	132° 51' 19,58"	3° 38' 34,03"
1306	132° 51' 22,39"	3° 38' 39,76"
1307	132° 51' 24,76"	3° 38' 40,16"
1308	132° 51' 26,25"	3° 38' 39,17"
1309	132° 51' 56,18"	3° 38' 42,77"
1310	132° 51' 55,88"	3° 38' 43,73"
1311	132° 52' 4,94"	3° 38' 44,74"
1312	132° 52' 3,84"	3° 38' 35,77"
1313	132° 53' 28,32"	3° 38' 39,80"
1314	132° 53' 31,71"	3° 38' 40,93"
1315	132° 53' 57,77"	3° 38' 12,13"
1316	132° 53' 57,48"	3° 38' 10,43"
1317	132° 53' 47,80"	3° 35' 41,57"
1318	132° 53' 51,35"	3° 35' 44,89"
1319	132° 54' 12,19"	3° 35' 19,20"
1320	132° 54' 8,68"	3° 35' 17,02"
1321	132° 54' 20,71"	3° 34' 26,37"
1322	132° 54' 22,80"	3° 34' 31,21"
1323	132° 54' 59,26"	3° 34' 42,33"
1324	132° 55' 15,27"	3° 34' 39,41"
1325	132° 55' 11,72"	3° 34' 27,99"
1326	132° 55' 52,79"	3° 33' 28,23"
1327	132° 55' 58,29"	3° 33' 42,38"
1328	132° 56' 17,87"	3° 33' 47,94"

Nomor Titik Peta	Koordinat	
	Bujur Timur (BT)	Lintang Selatan (LS)
1329	132° 56' 47,19"	3° 32' 55,73"
1330	132° 56' 39,08"	3° 32' 49,32"
1331	132° 56' 22,08"	3° 32' 59,25"
1332	132° 56' 14,49"	3° 32' 52,74"
1333	132° 56' 25,67"	3° 32' 34,69"
1334	132° 56' 14,73"	3° 32' 28,74"
1335	132° 55' 56,94"	3° 32' 53,08"
1336	132° 55' 53,69"	3° 32' 52,88"
1337	132° 55' 53,91"	3° 32' 51,32"
1338	132° 55' 29,29"	3° 32' 44,35"
1339	132° 55' 28,33"	3° 32' 46,67"
1340	132° 55' 25,93"	3° 32' 43,72"
1341	132° 55' 26,40"	3° 32' 39,62"
1342	132° 55' 6,40"	3° 32' 38,05"
1343	132° 54' 58,61"	3° 32' 54,96"
1344	132° 54' 45,30"	3° 32' 55,29"
1345	132° 54' 43,64"	3° 32' 55,02"
1346	132° 54' 37,04"	3° 32' 57,39"
1347	132° 54' 35,81"	3° 32' 49,69"
1348	132° 54' 40,31"	3° 32' 48,18"
1349	132° 54' 38,93"	3° 32' 39,54"
1350	132° 54' 45,89"	3° 32' 38,79"
1351	132° 54' 51,27"	3° 32' 30,59"
1352	132° 54' 38,42"	3° 32' 17,00"
1353	132° 54' 41,85"	3° 32' 15,24"
1354	132° 55' 3,91"	3° 32' 30,52"
1355	132° 55' 28,11"	3° 32' 16,25"
1356	132° 55' 30,18"	3° 31' 56,98"
1357	132° 55' 18,31"	3° 31' 30,10"
1358	132° 55' 9,37"	3° 31' 36,04"
1359	132° 55' 5,73"	3° 31' 51,79"
1360	132° 54' 53,14"	3° 31' 51,74"
1361	132° 54' 41,31"	3° 32' 0,18"
1362	132° 54' 34,47"	3° 31' 50,87"
1363	132° 54' 35,83"	3° 31' 49,32"
1364	132° 54' 34,98"	3° 31' 47,97"
1365	132° 54' 31,12"	3° 31' 51,03"
1366	132° 54' 26,21"	3° 31' 48,72"
1367	132° 54' 27,50"	3° 31' 48,28"
1368	132° 54' 27,81"	3° 31' 44,38"
1369	132° 54' 20,06"	3° 31' 41,18"
1370	132° 54' 19,56"	3° 31' 43,13"

Nomor Titik Peta	Koordinat	
	Bujur Timur (BT)	Lintang Selatan (LS)
1371	132° 54' 17,90"	3° 31' 42,28"
1372	132° 54' 15,45"	3° 31' 36,64"
1373	132° 54' 25,08"	3° 31' 14,22"
1374	132° 54' 9,79"	3° 31' 6,04"
1375	132° 54' 8,51"	3° 31' 11,04"
1376	132° 54' 16,89"	3° 31' 19,31"
1377	132° 54' 8,46"	3° 31' 40,25"
1378	132° 54' 10,07"	3° 31' 45,82"
1379	132° 54' 2,30"	3° 31' 15,99"
1380	132° 54' 5,37"	3° 31' 12,90"
1381	132° 53' 56,21"	3° 31' 2,82"
1382	132° 53' 50,72"	3° 31' 8,52"
1383	132° 53' 43,04"	3° 30' 34,92"
1384	132° 53' 39,67"	3° 30' 23,86"
1385	132° 53' 21,81"	3° 30' 9,99"
1386	132° 53' 22,18"	3° 30' 3,08"
1387	132° 53' 30,59"	3° 29' 53,70"
1388	132° 53' 31,36"	3° 29' 45,99"
1389	132° 53' 43,35"	3° 29' 4,22"
1390	132° 53' 31,94"	3° 28' 56,10"
1391	132° 53' 24,91"	3° 29' 11,06"
1392	132° 53' 11,74"	3° 29' 0,14"
1393	132° 53' 9,07"	3° 29' 1,52"
1394	132° 53' 3,17"	3° 28' 56,95"
1395	132° 53' 11,17"	3° 28' 58,61"
1396	132° 53' 14,68"	3° 28' 47,80"
1397	132° 53' 1,94"	3° 28' 52,57"
1398	132° 53' 6,43"	3° 28' 37,67"
1399	132° 53' 11,15"	3° 28' 41,16"
1400	132° 53' 22,99"	3° 28' 33,29"
1401	132° 53' 17,04"	3° 28' 21,79"
1402	132° 53' 11,00"	3° 28' 20,92"
1403	132° 53' 11,46"	3° 28' 11,25"
1404	132° 53' 14,52"	3° 28' 17,72"
1405	132° 53' 28,25"	3° 28' 28,37"
1406	132° 53' 39,04"	3° 28' 17,25"
1407	132° 53' 45,90"	3° 28' 25,84"
1408	132° 53' 58,21"	3° 28' 17,55"
1409	132° 53' 44,43"	3° 28' 3,18"
1410	132° 53' 20,97"	3° 28' 4,13"
1411	132° 53' 42,16"	3° 27' 53,95"
1412	132° 53' 40,96"	3° 27' 50,90"

Nomor Titik Peta	Koordinat	
	Bujur Timur (BT)	Lintang Selatan (LS)
1413	132° 53' 46,58"	3° 27' 48,22"
1414	132° 53' 53,88"	3° 27' 46,64"
1415	132° 53' 56,20"	3° 27' 41,28"
1416	132° 53' 15,55"	3° 27' 18,21"
1417	132° 53' 11,18"	3° 27' 20,39"
1418	132° 53' 21,37"	3° 27' 27,43"
1419	132° 53' 17,34"	3° 27' 35,38"
1420	132° 53' 1,59"	3° 27' 32,68"
1421	132° 53' 7,84"	3° 27' 44,11"
1422	132° 53' 15,30"	3° 27' 47,54"
1423	132° 53' 9,87"	3° 27' 51,64"
1424	132° 52' 52,71"	3° 27' 41,52"
1425	132° 52' 38,60"	3° 27' 38,50"
1426	132° 52' 37,26"	3° 27' 43,17"
1427	132° 52' 30,80"	3° 27' 44,52"
1428	132° 52' 23,44"	3° 27' 41,27"
1429	132° 52' 19,33"	3° 27' 41,78"
1430	132° 52' 5,08"	3° 27' 49,34"
1431	132° 52' 4,44"	3° 27' 53,57"
1432	132° 52' 1,36"	3° 27' 55,36"
1433	132° 52' 0,08"	3° 27' 50,88"
1434	132° 51' 50,58"	3° 27' 51,91"
1435	132° 51' 55,20"	3° 28' 2,54"
1436	132° 51' 53,05"	3° 28' 6,36"
1437	132° 51' 40,37"	3° 28' 3,49"
1438	132° 51' 42,90"	3° 27' 59,70"
1439	132° 51' 31,22"	3° 27' 56,33"
1440	132° 51' 30,37"	3° 28' 0,07"
1441	132° 51' 37,27"	3° 28' 7,64"
1442	132° 51' 32,19"	3° 28' 10,58"
1443	132° 51' 28,45"	3° 28' 3,74"
1444	132° 51' 19,85"	3° 28' 9,53"
1445	132° 51' 5,59"	3° 28' 5,88"
1446	132° 50' 58,43"	3° 28' 13,18"
1447	132° 51' 16,78"	3° 28' 17,08"
1448	132° 51' 23,08"	3° 28' 24,97"
1449	132° 51' 31,36"	3° 28' 16,07"
1450	132° 51' 59,68"	3° 28' 13,18"
1451	132° 51' 59,78"	3° 28' 2,90"
1452	132° 52' 24,12"	3° 28' 2,88"
1453	132° 52' 24,24"	3° 28' 18,93"
1454	132° 52' 16,28"	3° 28' 19,05"

Nomor Titik Peta	Koordinat	
	Bujur Timur (BT)	Lintang Selatan (LS)
1455	132° 50' 25,16"	3° 28' 5,69"
1456	132° 50' 32,47"	3° 27' 57,32"
1457	132° 50' 22,03"	3° 27' 49,92"
1458	132° 50' 21,89"	3° 28' 0,25"
1459	132° 48' 49,09"	3° 23' 49,75"
1460	132° 48' 52,61"	3° 23' 49,27"
1461	132° 48' 54,11"	3° 23' 37,89"
1462	132° 48' 46,93"	3° 23' 17,39"
1463	132° 48' 38,68"	3° 23' 9,00"
1464	132° 48' 45,41"	3° 23' 5,50"
1465	132° 48' 31,47"	3° 22' 49,39"
1466	132° 48' 25,75"	3° 22' 56,53"
1467	132° 48' 5,38"	3° 22' 20,00"
1468	132° 48' 10,60"	3° 22' 23,28"
1469	132° 48' 25,23"	3° 22' 14,83"
1470	132° 48' 7,09"	3° 22' 3,03"
1471	132° 48' 1,46"	3° 21' 41,75"
1472	132° 48' 16,11"	3° 21' 36,26"
1473	132° 48' 9,18"	3° 21' 30,24"
1474	132° 47' 59,05"	3° 21' 36,75"
1475	132° 48' 23,47"	3° 20' 50,89"
1476	132° 48' 25,51"	3° 20' 52,90"
1477	132° 48' 50,34"	3° 20' 48,69"
1478	132° 48' 59,50"	3° 20' 41,39"
1479	132° 49' 7,77"	3° 20' 15,16"
1480	132° 49' 4,81"	3° 20' 4,63"
1481	132° 49' 2,53"	3° 20' 5,21"
1482	132° 49' 26,74"	3° 19' 46,01"
1483	132° 49' 12,03"	3° 20' 1,45"
1484	132° 49' 35,59"	3° 20' 15,70"
1485	132° 49' 55,20"	3° 20' 0,93"
1486	132° 49' 39,58"	3° 19' 53,22"
1487	132° 49' 52,06"	3° 19' 36,69"
1488	132° 49' 47,79"	3° 19' 20,62"
1489	132° 50' 12,45"	3° 18' 38,16"
1490	132° 50' 32,72"	3° 18' 30,00"
1491	132° 50' 39,41"	3° 18' 17,92"
1492	132° 50' 35,32"	3° 18' 10,84"
1493	132° 50' 45,22"	3° 17' 55,38"
1494	132° 50' 58,40"	3° 18' 8,12"
1495	132° 51' 9,51"	3° 17' 53,19"
1496	132° 50' 50,22"	3° 17' 33,61"

Nomor Titik Peta	Koordinat	
	Bujur Timur (BT)	Lintang Selatan (LS)
1497	132° 50' 39,17"	3° 17' 51,81"
1498	132° 50' 32,43"	3° 17' 48,89"
1499	132° 50' 33,17"	3° 17' 52,09"
1500	132° 50' 23,30"	3° 17' 53,19"
1501	132° 50' 23,95"	3° 17' 49,08"
1502	132° 50' 20,87"	3° 17' 46,14"
1503	132° 50' 21,01"	3° 17' 51,48"
1504	132° 50' 9,24"	3° 17' 50,91"
1505	132° 49' 52,89"	3° 17' 56,52"
1506	132° 49' 52,61"	3° 17' 58,90"
1507	132° 50' 8,94"	3° 17' 58,74"
1508	132° 50' 8,49"	3° 18' 5,47"
1509	132° 49' 49,57"	3° 18' 5,72"
1510	132° 49' 48,30"	3° 18' 2,60"
1511	132° 49' 41,57"	3° 17' 58,29"
1512	132° 49' 39,25"	3° 18' 0,06"
1513	132° 49' 31,30"	3° 17' 59,44"
1514	132° 49' 29,04"	3° 17' 55,25"
1515	132° 49' 26,70"	3° 17' 57,64"
1516	132° 49' 27,37"	3° 18' 4,85"
1517	132° 49' 22,46"	3° 18' 3,83"
1518	132° 49' 27,42"	3° 17' 44,75"
1519	132° 49' 6,52"	3° 17' 26,40"
1520	132° 49' 7,19"	3° 17' 20,26"
1521	132° 48' 49,32"	3° 17' 7,84"
1522	132° 48' 46,19"	3° 17' 10,57"
1523	132° 48' 53,46"	3° 17' 25,14"
1524	132° 49' 0,29"	3° 17' 29,98"
1525	132° 48' 58,44"	3° 17' 39,72"
1526	132° 48' 51,60"	3° 17' 34,37"
1527	132° 48' 51,09"	3° 17' 27,45"
1528	132° 48' 41,08"	3° 17' 23,74"
1529	132° 48' 38,51"	3° 17' 26,69"
1530	132° 48' 48,09"	3° 17' 36,76"
1531	132° 48' 21,16"	3° 17' 20,18"
1532	132° 48' 31,84"	3° 17' 22,84"
1533	132° 48' 31,58"	3° 17' 18,61"
1534	132° 48' 21,84"	3° 17' 18,22"
1535	132° 48' 10,97"	3° 17' 0,34"
1536	132° 48' 11,75"	3° 16' 58,84"
1537	132° 48' 9,01"	3° 16' 54,52"
1538	132° 48' 6,02"	3° 16' 55,96"

Nomor Titik Peta	Koordinat	
	Bujur Timur (BT)	Lintang Selatan (LS)
1539	132° 48' 0,06"	3° 16' 53,56"
1540	132° 47' 49,65"	3° 16' 53,56"
1541	132° 47' 49,56"	3° 16' 37,39"
1542	132° 48' 5,74"	3° 16' 37,39"
1543	132° 48' 5,83"	3° 16' 50,10"
1544	132° 48' 6,92"	3° 16' 50,15"
1545	132° 48' 14,39"	3° 16' 54,91"
1546	132° 48' 32,08"	3° 16' 41,02"
1547	132° 48' 21,83"	3° 16' 22,93"
1548	132° 48' 43,20"	3° 16' 3,12"
1549	132° 48' 40,31"	3° 15' 51,35"
1550	132° 48' 52,12"	3° 15' 48,53"
1551	132° 48' 49,04"	3° 15' 45,20"
1552	132° 48' 38,46"	3° 15' 48,81"
1553	132° 48' 30,47"	3° 15' 39,14"
1554	132° 48' 30,81"	3° 15' 37,64"
1555	132° 48' 27,48"	3° 15' 37,26"
1556	132° 48' 26,51"	3° 15' 39,76"
1557	132° 48' 8,04"	3° 15' 45,26"
1558	132° 47' 22,26"	3° 15' 37,12"
1559	132° 47' 23,75"	3° 15' 45,76"
1560	132° 47' 17,59"	3° 15' 46,55"
1561	132° 47' 9,40"	3° 15' 29,13"
1562	132° 47' 15,21"	3° 15' 26,44"
1563	132° 47' 13,09"	3° 15' 23,47"
1564	132° 46' 56,43"	3° 15' 18,06"
1565	132° 46' 55,92"	3° 15' 26,36"
1566	132° 47' 4,00"	3° 15' 28,83"
1567	132° 47' 4,65"	3° 15' 34,31"
1568	132° 46' 58,67"	3° 15' 34,69"
1569	132° 46' 58,47"	3° 15' 37,53"
1570	132° 47' 7,65"	3° 15' 36,11"
1571	132° 47' 10,30"	3° 15' 43,96"
1572	132° 47' 11,73"	3° 15' 50,27"
1573	132° 47' 9,07"	3° 16' 1,73"
1574	132° 47' 7,25"	3° 16' 4,53"
1575	132° 47' 5,74"	3° 16' 4,84"
1576	132° 47' 2,70"	3° 16' 9,05"
1577	132° 47' 6,70"	3° 16' 11,90"
1578	132° 47' 13,70"	3° 16' 13,88"
1579	132° 47' 12,44"	3° 16' 16,88"
1580	132° 47' 32,36"	3° 16' 16,63"

Nomor Titik Peta	Koordinat	
	Bujur Timur (BT)	Lintang Selatan (LS)
1581	132° 47' 37,48"	3° 16' 20,46"
1582	132° 47' 10,11"	3° 16' 24,71"
1583	132° 47' 10,10"	3° 16' 20,75"
1584	132° 47' 9,10"	3° 16' 19,73"
1585	132° 46' 58,15"	3° 16' 16,11"
1586	132° 46' 56,90"	3° 16' 11,21"
1587	132° 46' 44,20"	3° 16' 4,56"
1588	132° 46' 41,15"	3° 15' 59,09"
1589	132° 46' 31,30"	3° 16' 5,87"
1590	132° 46' 27,97"	3° 16' 0,72"
1591	132° 46' 25,58"	3° 16' 2,13"
1592	132° 46' 22,81"	3° 15' 32,24"
1593	132° 46' 43,48"	3° 15' 43,81"
1594	132° 46' 39,17"	3° 15' 49,48"
1595	132° 46' 59,01"	3° 15' 57,01"
1596	132° 47' 3,50"	3° 15' 50,40"
1597	132° 46' 23,80"	3° 15' 17,32"
1598	132° 46' 9,18"	3° 15' 20,04"
1599	132° 45' 56,32"	3° 15' 41,21"
1600	132° 46' 3,79"	3° 15' 45,26"
1601	132° 45' 6,28"	3° 16' 36,64"
1602	132° 45' 5,67"	3° 16' 33,83"
1603	132° 45' 3,82"	3° 16' 33,21"
1604	132° 45' 3,17"	3° 16' 38,80"
1605	132° 45' 0,01"	3° 16' 39,99"
1606	132° 45' 0,47"	3° 16' 37,25"
1607	132° 44' 59,13"	3° 16' 36,35"
1608	132° 44' 45,76"	3° 16' 31,03"
1609	132° 44' 34,96"	3° 16' 39,50"
1610	132° 44' 33,31"	3° 16' 34,00"
1611	132° 44' 35,26"	3° 16' 29,21"
1612	132° 44' 34,59"	3° 16' 14,35"
1613	132° 44' 33,22"	3° 16' 14,29"
1614	132° 44' 32,16"	3° 16' 30,19"
1615	132° 43' 22,26"	3° 29' 2,35"
1616	132° 43' 23,88"	3° 29' 2,35"
1617	132° 43' 23,88"	3° 28' 46,18"
1618	132° 43' 15,43"	3° 28' 46,18"

Titik Koordinat Batas Zona Inti

Nomor Titik Peta	Koordinat	
	Bujur Timur (BT)	Lintang Selatan (LS)
1293	132° 33' 47,77"	3° 50' 48,59"
1294	132° 36' 39,47"	3° 57' 31,22"
1607	132° 44' 59,13"	3° 16' 36,35"
1608	132° 44' 45,76"	3° 16' 31,03"
1609	132° 44' 34,96"	3° 16' 39,50"
1610	132° 44' 33,31"	3° 16' 34,00"
1611	132° 44' 35,26"	3° 16' 29,21"
1612	132° 44' 34,59"	3° 16' 14,35"
1613	132° 44' 33,22"	3° 16' 14,29"
1614	132° 44' 32,16"	3° 16' 30,19"
1619	132° 43' 55,29"	3° 17' 56,10"
1620	132° 44' 58,95"	3° 17' 56,24"
1621	132° 44' 59,12"	3° 16' 39,92"
1622	132° 35' 57,62"	3° 37' 12,37"
1623	132° 33' 21,28"	3° 37' 54,60"
1624	132° 35' 50,10"	3° 47' 8,03"
1625	132° 38' 25,77"	3° 46' 23,08"
1626	132° 39' 31,20"	4° 1' 2,89"
1627	132° 42' 56,88"	4° 0' 7,39"
1628	132° 36' 43,04"	3° 50' 1,29"
1629	132° 39' 56,94"	3° 49' 31,18"
1630	132° 43' 53,41"	3° 59' 52,14"
1631	132° 45' 3,57"	3° 59' 33,21"
1632	132° 42' 0,06"	3° 48' 57,94"
1633	132° 53' 42,02"	3° 36' 56,38"
1634	132° 52' 54,58"	3° 36' 56,27"
1635	132° 52' 54,51"	3° 37' 28,82"
1636	132° 53' 53,76"	3° 37' 28,96"

Titik Koordinat Batas Zona Pemanfaatan Terbatas Subzona Wisata

Nomor Titik Peta	Koordinat	
	Bujur Timur (BT)	Lintang Selatan (LS)
1296	132° 50' 12,34"	3° 58' 9,89"
1541	132° 47' 49,56"	3° 16' 37,39"
1542	132° 48' 5,74"	3° 16' 37,39"
1543	132° 48' 5,83"	3° 16' 50,10"
1544	132° 48' 6,92"	3° 16' 50,15"
1545	132° 48' 14,39"	3° 16' 54,91"
1546	132° 48' 32,08"	3° 16' 41,02"
1547	132° 48' 21,83"	3° 16' 22,93"

Nomor Titik Peta	Koordinat	
	Bujur Timur (BT)	Lintang Selatan (LS)
1548	132° 48' 43,20"	3° 16' 3,12"
1549	132° 48' 40,31"	3° 15' 51,35"
1550	132° 48' 52,12"	3° 15' 48,53"
1551	132° 48' 49,04"	3° 15' 45,20"
1552	132° 48' 38,46"	3° 15' 48,81"
1553	132° 48' 30,47"	3° 15' 39,14"
1554	132° 48' 30,81"	3° 15' 37,64"
1555	132° 48' 27,48"	3° 15' 37,26"
1556	132° 48' 26,51"	3° 15' 39,76"
1557	132° 48' 8,04"	3° 15' 45,26"
1558	132° 47' 22,26"	3° 15' 37,12"
1559	132° 47' 23,75"	3° 15' 45,76"
1560	132° 47' 17,59"	3° 15' 46,55"
1561	132° 47' 9,40"	3° 15' 29,13"
1562	132° 47' 15,21"	3° 15' 26,44"
1563	132° 47' 13,09"	3° 15' 23,47"
1564	132° 46' 56,43"	3° 15' 18,06"
1565	132° 46' 55,92"	3° 15' 26,36"
1566	132° 47' 4,00"	3° 15' 28,83"
1567	132° 47' 4,65"	3° 15' 34,31"
1568	132° 46' 58,67"	3° 15' 34,69"
1569	132° 46' 58,47"	3° 15' 37,53"
1570	132° 47' 7,65"	3° 15' 36,11"
1571	132° 47' 10,30"	3° 15' 43,96"
1572	132° 47' 11,73"	3° 15' 50,27"
1573	132° 47' 9,07"	3° 16' 1,73"
1574	132° 47' 7,25"	3° 16' 4,53"
1575	132° 47' 5,74"	3° 16' 4,84"
1576	132° 47' 2,70"	3° 16' 9,05"
1577	132° 47' 6,70"	3° 16' 11,90"
1578	132° 47' 13,70"	3° 16' 13,88"
1579	132° 47' 12,44"	3° 16' 16,88"
1580	132° 47' 32,36"	3° 16' 16,63"
1581	132° 47' 37,48"	3° 16' 20,46"
1582	132° 47' 10,11"	3° 16' 24,71"
1583	132° 47' 10,10"	3° 16' 20,75"
1584	132° 47' 9,10"	3° 16' 19,73"
1585	132° 46' 58,15"	3° 16' 16,11"
1586	132° 46' 56,90"	3° 16' 11,21"
1587	132° 46' 44,20"	3° 16' 4,56"
1588	132° 46' 41,15"	3° 15' 59,09"
1589	132° 46' 31,30"	3° 16' 5,87"

Nomor Titik Peta	Koordinat	
	Bujur Timur (BT)	Lintang Selatan (LS)
1590	132° 46' 27,97"	3° 16' 0,72"
1591	132° 46' 25,58"	3° 16' 2,13"
1592	132° 46' 22,81"	3° 15' 32,24"
1593	132° 46' 43,48"	3° 15' 43,81"
1594	132° 46' 39,17"	3° 15' 49,48"
1595	132° 46' 59,01"	3° 15' 57,01"
1596	132° 47' 3,50"	3° 15' 50,40"
1597	132° 46' 23,80"	3° 15' 17,32"
1598	132° 46' 9,18"	3° 15' 20,04"
1599	132° 45' 56,32"	3° 15' 41,21"
1600	132° 46' 3,79"	3° 15' 45,26"
1601	132° 45' 6,28"	3° 16' 36,64"
1602	132° 45' 5,67"	3° 16' 33,83"
1603	132° 45' 3,82"	3° 16' 33,21"
1604	132° 45' 3,17"	3° 16' 38,80"
1605	132° 45' 0,01"	3° 16' 39,99"
1606	132° 45' 0,47"	3° 16' 37,25"
1607	132° 44' 59,13"	3° 16' 36,35"
1619	132° 43' 55,29"	3° 17' 56,10"
1620	132° 44' 58,95"	3° 17' 56,24"
1621	132° 44' 59,12"	3° 16' 39,92"
1631	132° 45' 3,57"	3° 59' 33,21"
1632	132° 42' 0,06"	3° 48' 57,94"
1637	132° 43' 11,77"	3° 20' 14,80"
1638	132° 45' 16,76"	3° 21' 1,94"
1639	132° 45' 43,19"	3° 19' 46,58"
1640	132° 47' 49,56"	3° 16' 47,61"
1641	132° 38' 53,99"	3° 23' 58,17"
1642	132° 37' 39,12"	3° 22' 9,44"
1643	132° 34' 56,41"	3° 24' 25,43"
1644	132° 38' 57,87"	3° 28' 58,22"
1645	132° 40' 28,22"	3° 27' 46,76"
1646	132° 44' 31,82"	3° 37' 34,89"
1647	132° 44' 31,88"	3° 37' 7,84"
1648	132° 43' 3,44"	3° 37' 7,61"
1649	132° 43' 3,21"	3° 38' 41,29"
1650	132° 43' 41,95"	3° 38' 41,39"
1651	132° 46' 56,82"	3° 47' 37,84"

Titik Koordinat Batas Zona Pemanfaatan Terbatas
Subzona Perikanan Tradisional

Nomor Titik Peta	Koordinat	
	Bujur Timur (BT)	Lintang Selatan (LS)
1289	132° 39' 31,87"	3° 18' 29,45"
1290	132° 26' 11,52"	3° 22' 5,32"
1291	132° 26' 25,04"	3° 28' 36,80"
1292	132° 32' 1,94"	3° 37' 41,09"
1293	132° 33' 47,77"	3° 50' 48,59"
1294	132° 36' 39,47"	3° 57' 31,22"
1295	132° 37' 35,22"	4° 1' 34,18"
1297	132° 50' 13,72"	3° 38' 26,06"
1298	132° 50' 23,40"	3° 38' 34,73"
1299	132° 50' 23,77"	3° 38' 27,15"
1300	132° 51' 10,74"	3° 38' 29,47"
1301	132° 51' 10,17"	3° 38' 32,72"
1302	132° 51' 15,59"	3° 38' 34,26"
1303	132° 51' 16,41"	3° 38' 29,73"
1304	132° 51' 20,84"	3° 38' 30,19"
1305	132° 51' 19,58"	3° 38' 34,03"
1306	132° 51' 22,39"	3° 38' 39,76"
1307	132° 51' 24,76"	3° 38' 40,16"
1308	132° 51' 26,25"	3° 38' 39,17"
1309	132° 51' 56,18"	3° 38' 42,77"
1310	132° 51' 55,88"	3° 38' 43,73"
1311	132° 52' 4,94"	3° 38' 44,74"
1312	132° 52' 3,84"	3° 38' 35,77"
1313	132° 53' 28,32"	3° 38' 39,80"
1314	132° 53' 31,71"	3° 38' 40,93"
1315	132° 53' 57,77"	3° 38' 12,13"
1316	132° 53' 57,48"	3° 38' 10,43"
1317	132° 53' 47,80"	3° 35' 41,57"
1318	132° 53' 51,35"	3° 35' 44,89"
1319	132° 54' 12,19"	3° 35' 19,20"
1320	132° 54' 8,68"	3° 35' 17,02"
1321	132° 54' 20,71"	3° 34' 26,37"
1322	132° 54' 22,80"	3° 34' 31,21"
1323	132° 54' 59,26"	3° 34' 42,33"
1324	132° 55' 15,27"	3° 34' 39,41"
1325	132° 55' 11,72"	3° 34' 27,99"
1326	132° 55' 52,79"	3° 33' 28,23"
1327	132° 55' 58,29"	3° 33' 42,38"
1328	132° 56' 17,87"	3° 33' 47,94"

Nomor Titik Peta	Koordinat	
	Bujur Timur (BT)	Lintang Selatan (LS)
1329	132° 56' 47,19"	3° 32' 55,73"
1330	132° 56' 39,08"	3° 32' 49,32"
1331	132° 56' 22,08"	3° 32' 59,25"
1332	132° 56' 14,49"	3° 32' 52,74"
1333	132° 56' 25,67"	3° 32' 34,69"
1334	132° 56' 14,73"	3° 32' 28,74"
1335	132° 55' 56,94"	3° 32' 53,08"
1336	132° 55' 53,69"	3° 32' 52,88"
1337	132° 55' 53,91"	3° 32' 51,32"
1338	132° 55' 29,29"	3° 32' 44,35"
1339	132° 55' 28,33"	3° 32' 46,67"
1340	132° 55' 25,93"	3° 32' 43,72"
1341	132° 55' 26,40"	3° 32' 39,62"
1342	132° 55' 6,40"	3° 32' 38,05"
1343	132° 54' 58,61"	3° 32' 54,96"
1344	132° 54' 45,30"	3° 32' 55,29"
1345	132° 54' 43,64"	3° 32' 55,02"
1346	132° 54' 37,04"	3° 32' 57,39"
1347	132° 54' 35,81"	3° 32' 49,69"
1348	132° 54' 40,31"	3° 32' 48,18"
1349	132° 54' 38,93"	3° 32' 39,54"
1388	132° 53' 31,36"	3° 29' 45,99"
1389	132° 53' 43,35"	3° 29' 4,22"
1390	132° 53' 31,94"	3° 28' 56,10"
1391	132° 53' 24,91"	3° 29' 11,06"
1392	132° 53' 11,74"	3° 29' 0,14"
1393	132° 53' 9,07"	3° 29' 1,52"
1394	132° 53' 3,17"	3° 28' 56,95"
1395	132° 53' 11,17"	3° 28' 58,61"
1396	132° 53' 14,68"	3° 28' 47,80"
1397	132° 53' 1,94"	3° 28' 52,57"
1398	132° 53' 6,43"	3° 28' 37,67"
1399	132° 53' 11,15"	3° 28' 41,16"
1400	132° 53' 22,99"	3° 28' 33,29"
1401	132° 53' 17,04"	3° 28' 21,79"
1402	132° 53' 11,00"	3° 28' 20,92"
1403	132° 53' 11,46"	3° 28' 11,25"
1404	132° 53' 14,52"	3° 28' 17,72"
1405	132° 53' 28,25"	3° 28' 28,37"
1406	132° 53' 39,04"	3° 28' 17,25"
1407	132° 53' 45,90"	3° 28' 25,84"
1408	132° 53' 58,21"	3° 28' 17,55"

Nomor Titik Peta	Koordinat	
	Bujur Timur (BT)	Lintang Selatan (LS)
1409	132° 53' 44,43"	3° 28' 3,18"
1410	132° 53' 20,97"	3° 28' 4,13"
1411	132° 53' 42,16"	3° 27' 53,95"
1412	132° 53' 40,96"	3° 27' 50,90"
1413	132° 53' 46,58"	3° 27' 48,22"
1414	132° 53' 53,88"	3° 27' 46,64"
1415	132° 53' 56,20"	3° 27' 41,28"
1416	132° 53' 15,55"	3° 27' 18,21"
1417	132° 53' 11,18"	3° 27' 20,39"
1418	132° 53' 21,37"	3° 27' 27,43"
1419	132° 53' 17,34"	3° 27' 35,38"
1420	132° 53' 1,59"	3° 27' 32,68"
1421	132° 53' 7,84"	3° 27' 44,11"
1422	132° 53' 15,30"	3° 27' 47,54"
1423	132° 53' 9,87"	3° 27' 51,64"
1424	132° 52' 52,71"	3° 27' 41,52"
1425	132° 52' 38,60"	3° 27' 38,50"
1426	132° 52' 37,26"	3° 27' 43,17"
1427	132° 52' 30,80"	3° 27' 44,52"
1428	132° 52' 23,44"	3° 27' 41,27"
1429	132° 52' 19,33"	3° 27' 41,78"
1430	132° 52' 5,08"	3° 27' 49,34"
1431	132° 52' 4,44"	3° 27' 53,57"
1432	132° 52' 1,36"	3° 27' 55,36"
1433	132° 52' 0,08"	3° 27' 50,88"
1434	132° 51' 50,58"	3° 27' 51,91"
1435	132° 51' 55,20"	3° 28' 2,54"
1436	132° 51' 53,05"	3° 28' 6,36"
1437	132° 51' 40,37"	3° 28' 3,49"
1438	132° 51' 42,90"	3° 27' 59,70"
1439	132° 51' 31,22"	3° 27' 56,33"
1440	132° 51' 30,37"	3° 28' 0,07"
1441	132° 51' 37,27"	3° 28' 7,64"
1442	132° 51' 32,19"	3° 28' 10,58"
1443	132° 51' 28,45"	3° 28' 3,74"
1444	132° 51' 19,85"	3° 28' 9,53"
1445	132° 51' 5,59"	3° 28' 5,88"
1446	132° 50' 58,43"	3° 28' 13,18"
1447	132° 51' 16,78"	3° 28' 17,08"
1448	132° 51' 23,08"	3° 28' 24,97"
1449	132° 51' 31,36"	3° 28' 16,07"
1450	132° 51' 59,68"	3° 28' 13,18"

Nomor Titik Peta	Koordinat	
	Bujur Timur (BT)	Lintang Selatan (LS)
1451	132° 51' 59,78"	3° 28' 2,90"
1452	132° 52' 24,12"	3° 28' 2,88"
1453	132° 52' 24,24"	3° 28' 18,93"
1454	132° 52' 16,28"	3° 28' 19,05"
1455	132° 50' 25,16"	3° 28' 5,69"
1456	132° 50' 32,47"	3° 27' 57,32"
1457	132° 50' 22,03"	3° 27' 49,92"
1458	132° 50' 21,89"	3° 28' 0,25"
1615	132° 43' 22,26"	3° 29' 2,35"
1616	132° 43' 23,88"	3° 29' 2,35"
1617	132° 43' 23,88"	3° 28' 46,18"
1618	132° 43' 15,43"	3° 28' 46,18"
1622	132° 35' 57,62"	3° 37' 12,37"
1623	132° 33' 21,28"	3° 37' 54,60"
1624	132° 35' 50,10"	3° 47' 8,03"
1625	132° 38' 25,77"	3° 46' 23,08"
1627	132° 42' 56,88"	4° 0' 7,39"
1628	132° 36' 43,04"	3° 50' 1,29"
1629	132° 39' 56,94"	3° 49' 31,18"
1630	132° 43' 53,41"	3° 59' 52,14"
1632	132° 42' 0,06"	3° 48' 57,94"
1633	132° 53' 42,02"	3° 36' 56,38"
1634	132° 52' 54,58"	3° 36' 56,27"
1635	132° 52' 54,51"	3° 37' 28,82"
1636	132° 53' 53,76"	3° 37' 28,96"
1637	132° 43' 11,77"	3° 20' 14,80"
1638	132° 45' 16,76"	3° 21' 1,94"
1641	132° 38' 53,99"	3° 23' 58,17"
1642	132° 37' 39,12"	3° 22' 9,44"
1643	132° 34' 56,41"	3° 24' 25,43"
1644	132° 38' 57,87"	3° 28' 58,22"
1645	132° 40' 28,22"	3° 27' 46,76"
1646	132° 44' 31,82"	3° 37' 34,89"
1647	132° 44' 31,88"	3° 37' 7,84"
1648	132° 43' 3,44"	3° 37' 7,61"
1649	132° 43' 3,21"	3° 38' 41,29"
1650	132° 43' 41,95"	3° 38' 41,39"
1651	132° 46' 56,82"	3° 47' 37,84"
2248	132° 46' 58,92"	3° 21' 36,00"
2249	132° 48' 6,45"	3° 26' 16,86"
2250	132° 49' 12,56"	3° 26' 0,96"
2251	132° 51' 0,05"	3° 29' 45,99"

Nomor Titik Peta	Koordinat	
	Bujur Timur (BT)	Lintang Selatan (LS)
2252	132° 51' 0,05"	3° 32' 39,45"

Titik Koordinat Batas Zona Pemanfaatan Terbatas Subzona Perlindungan Danau Air Asin

Nomor Titik Peta	Koordinat	
	Bujur Timur (BT)	Lintang Selatan (LS)
1652	132° 43' 23,10"	3° 29' 32,56"
1653	132° 43' 23,12"	3° 29' 34,31"
1654	132° 43' 22,59"	3° 29' 36,66"
1655	132° 43' 21,31"	3° 29' 34,83"
1656	132° 43' 22,63"	3° 29' 32,52"
1657	132° 48' 46,31"	3° 55' 24,19"
1658	132° 49' 12,96"	3° 55' 32,94"
1659	132° 49' 20,09"	3° 55' 42,78"
1660	132° 49' 19,68"	3° 55' 44,11"
1661	132° 49' 2,54"	3° 55' 47,08"
1662	132° 49' 1,10"	3° 55' 41,50"
1663	132° 48' 49,03"	3° 55' 36,78"
1664	132° 49' 22,05"	3° 55' 45,03"
1665	132° 49' 26,15"	3° 55' 47,90"
1666	132° 49' 24,87"	3° 55' 48,51"
1667	132° 49' 20,81"	3° 55' 45,18"

Titik Koordinat Batas Zona Pemanfaatan Terbatas Subzona Perlindungan Pulau Kecil

Nomor Titik Peta	Koordinat	
	Bujur Timur (BT)	Lintang Selatan (LS)
1668	132° 49' 44,28"	3° 57' 58,75"
1669	132° 49' 44,08"	3° 58' 1,86"
1670	132° 49' 47,34"	3° 58' 6,57"
1671	132° 49' 47,10"	3° 58' 3,49"
1672	132° 49' 45,97"	3° 57' 59,16"
1673	132° 49' 40,68"	3° 57' 46,46"
1674	132° 49' 40,21"	3° 57' 51,73"
1675	132° 49' 42,30"	3° 57' 56,63"
1676	132° 49' 44,51"	3° 57' 57,98"
1677	132° 49' 45,15"	3° 57' 53,46"
1678	132° 49' 42,33"	3° 57' 50,42"
1679	132° 49' 41,73"	3° 57' 46,91"
1680	132° 49' 35,56"	3° 57' 50,49"
1681	132° 49' 35,37"	3° 57' 50,70"
1682	132° 49' 35,71"	3° 57' 51,13"

Nomor Titik Peta	Koordinat	
	Bujur Timur (BT)	Lintang Selatan (LS)
1683	132° 49' 36,05"	3° 57' 51,00"
1684	132° 49' 36,46"	3° 57' 40,00"
1685	132° 49' 37,86"	3° 57' 42,32"
1686	132° 49' 38,71"	3° 57' 42,71"
1687	132° 49' 39,74"	3° 57' 40,94"
1688	132° 50' 5,42"	3° 57' 38,77"
1689	132° 50' 5,49"	3° 57' 39,26"
1690	132° 50' 5,68"	3° 57' 39,06"
1691	132° 50' 5,63"	3° 57' 38,91"
1692	132° 50' 4,41"	3° 57' 35,49"
1693	132° 50' 4,64"	3° 57' 36,41"
1694	132° 50' 5,64"	3° 57' 35,87"
1695	132° 50' 5,19"	3° 57' 34,91"
1696	132° 50' 4,46"	3° 57' 33,94"
1697	132° 50' 4,73"	3° 57' 34,25"
1698	132° 50' 4,46"	3° 57' 34,38"
1699	132° 50' 4,31"	3° 57' 34,29"
1700	132° 50' 4,68"	3° 57' 34,07"
1701	132° 50' 0,69"	3° 57' 28,72"
1702	132° 49' 59,80"	3° 57' 28,99"
1703	132° 50' 0,58"	3° 57' 30,97"
1704	132° 50' 2,40"	3° 57' 33,01"
1705	132° 50' 4,02"	3° 57' 30,78"
1706	132° 50' 1,67"	3° 57' 28,83"
1707	132° 49' 55,91"	3° 57' 19,67"
1708	132° 49' 56,15"	3° 57' 20,12"
1709	132° 49' 56,43"	3° 57' 20,15"
1710	132° 49' 56,38"	3° 57' 19,65"
1711	132° 49' 49,06"	3° 57' 14,29"
1712	132° 49' 49,49"	3° 57' 18,00"
1713	132° 49' 53,30"	3° 57' 22,76"
1714	132° 49' 50,55"	3° 57' 14,13"
1715	132° 49' 47,16"	3° 57' 18,30"
1716	132° 49' 46,39"	3° 57' 19,42"
1717	132° 49' 47,40"	3° 57' 20,19"
1718	132° 49' 48,26"	3° 57' 19,01"
1719	132° 49' 48,46"	3° 57' 12,54"
1720	132° 49' 48,47"	3° 57' 12,79"
1721	132° 49' 48,70"	3° 57' 12,89"
1722	132° 49' 48,75"	3° 57' 12,59"
1723	132° 49' 46,89"	3° 57' 12,58"
1724	132° 49' 46,72"	3° 57' 13,29"

Nomor Titik Peta	Koordinat	
	Bujur Timur (BT)	Lintang Selatan (LS)
1725	132° 49' 47,14"	3° 57' 13,61"
1726	132° 49' 47,54"	3° 57' 13,07"
1727	132° 49' 47,27"	3° 57' 12,51"
1728	132° 48' 44,62"	3° 57' 9,38"
1729	132° 48' 44,79"	3° 57' 11,08"
1730	132° 48' 45,81"	3° 57' 11,58"
1731	132° 48' 45,89"	3° 57' 10,02"
1732	132° 48' 31,96"	3° 56' 43,32"
1733	132° 48' 31,75"	3° 56' 44,21"
1734	132° 48' 31,42"	3° 56' 45,06"
1735	132° 48' 32,64"	3° 56' 44,51"
1736	132° 48' 32,44"	3° 56' 43,13"
1737	132° 48' 20,09"	3° 56' 31,26"
1738	132° 48' 20,08"	3° 56' 32,56"
1739	132° 48' 19,87"	3° 56' 34,30"
1740	132° 48' 21,92"	3° 56' 34,18"
1741	132° 48' 20,51"	3° 56' 30,77"
1742	132° 48' 10,94"	3° 56' 27,18"
1743	132° 48' 12,20"	3° 56' 28,60"
1744	132° 48' 14,69"	3° 56' 28,07"
1745	132° 48' 13,68"	3° 56' 26,90"
1746	132° 48' 9,39"	3° 56' 19,62"
1747	132° 48' 12,01"	3° 56' 22,56"
1748	132° 48' 13,07"	3° 56' 22,48"
1749	132° 48' 12,61"	3° 56' 21,13"
1750	132° 48' 9,75"	3° 56' 17,96"
1751	132° 48' 5,64"	3° 56' 10,65"
1752	132° 48' 7,56"	3° 56' 16,21"
1753	132° 48' 9,78"	3° 56' 17,51"
1754	132° 48' 6,36"	3° 56' 10,12"
1755	132° 48' 26,02"	3° 55' 6,48"
1756	132° 48' 25,21"	3° 55' 8,83"
1757	132° 48' 27,27"	3° 55' 10,42"
1758	132° 48' 29,92"	3° 55' 8,17"
1759	132° 48' 28,59"	3° 55' 5,88"
1760	132° 48' 29,45"	3° 55' 2,07"
1761	132° 48' 28,25"	3° 55' 3,82"
1762	132° 48' 29,47"	3° 55' 4,74"
1763	132° 48' 31,29"	3° 55' 3,72"
1764	132° 48' 30,46"	3° 55' 2,07"
1765	132° 48' 33,83"	3° 55' 5,28"
1766	132° 48' 33,79"	3° 55' 5,61"

Nomor Titik Peta	Koordinat	
	Bujur Timur (BT)	Lintang Selatan (LS)
1767	132° 48' 33,87"	3° 55' 5,66"
1768	132° 48' 34,06"	3° 55' 5,37"
1769	132° 48' 38,29"	3° 55' 4,41"
1770	132° 48' 35,08"	3° 55' 10,06"
1771	132° 48' 39,96"	3° 55' 12,55"
1772	132° 48' 56,33"	3° 55' 13,84"
1773	132° 48' 49,47"	3° 55' 8,57"
1774	132° 49' 1,52"	3° 55' 15,53"
1775	132° 49' 1,14"	3° 55' 16,20"
1776	132° 49' 4,19"	3° 55' 17,02"
1777	132° 49' 3,42"	3° 55' 15,22"
1778	132° 48' 46,07"	3° 55' 0,06"
1779	132° 49' 10,93"	3° 55' 16,24"
1780	132° 49' 7,80"	3° 55' 9,86"
1781	132° 48' 45,83"	3° 54' 55,90"
1782	132° 48' 40,69"	3° 54' 53,16"
1783	132° 48' 41,27"	3° 54' 54,91"
1784	132° 48' 42,83"	3° 54' 55,69"
1785	132° 48' 42,83"	3° 54' 54,10"
1786	132° 50' 20,93"	3° 55' 21,17"
1787	132° 50' 20,89"	3° 55' 21,45"
1788	132° 50' 21,13"	3° 55' 21,60"
1789	132° 50' 21,32"	3° 55' 21,33"
1790	132° 50' 19,45"	3° 55' 16,36"
1791	132° 50' 19,69"	3° 55' 16,85"
1792	132° 50' 19,95"	3° 55' 16,68"
1793	132° 50' 19,67"	3° 55' 16,12"
1794	132° 50' 16,82"	3° 55' 9,95"
1795	132° 50' 17,01"	3° 55' 12,82"
1796	132° 50' 18,13"	3° 55' 14,26"
1797	132° 50' 19,05"	3° 55' 12,59"
1798	132° 50' 18,56"	3° 55' 9,00"
1799	132° 49' 27,81"	3° 53' 35,17"
1800	132° 49' 28,42"	3° 53' 36,13"
1801	132° 49' 28,80"	3° 53' 35,65"
1802	132° 49' 28,17"	3° 53' 34,51"
1803	132° 49' 24,81"	3° 53' 30,20"
1804	132° 49' 24,64"	3° 53' 30,60"
1805	132° 49' 25,41"	3° 53' 30,82"
1806	132° 49' 25,80"	3° 53' 30,75"
1807	132° 49' 25,38"	3° 53' 29,88"
1808	132° 49' 18,66"	3° 53' 24,05"

Nomor Titik Peta	Koordinat	
	Bujur Timur (BT)	Lintang Selatan (LS)
1809	132° 49' 19,11"	3° 53' 25,06"
1810	132° 49' 19,83"	3° 53' 25,13"
1811	132° 49' 19,02"	3° 53' 24,00"
1812	132° 49' 16,48"	3° 53' 6,83"
1813	132° 49' 16,91"	3° 53' 7,04"
1814	132° 49' 17,05"	3° 53' 6,85"
1815	132° 49' 16,99"	3° 53' 6,48"
1816	132° 48' 18,29"	3° 52' 59,91"
1817	132° 48' 21,89"	3° 53' 2,73"
1818	132° 48' 22,73"	3° 53' 0,18"
1819	132° 48' 20,81"	3° 52' 58,90"
1820	132° 48' 15,10"	3° 52' 53,92"
1821	132° 48' 16,69"	3° 52' 55,90"
1822	132° 48' 17,80"	3° 52' 54,55"
1823	132° 48' 16,35"	3° 52' 53,44"
1824	132° 48' 15,36"	3° 52' 53,54"
1825	132° 48' 49,53"	3° 52' 46,49"
1826	132° 48' 49,91"	3° 52' 47,14"
1827	132° 48' 50,08"	3° 52' 47,07"
1828	132° 48' 49,70"	3° 52' 46,34"
1829	132° 48' 41,73"	3° 52' 38,50"
1830	132° 48' 42,01"	3° 52' 38,87"
1831	132° 48' 42,57"	3° 52' 38,87"
1832	132° 48' 43,13"	3° 52' 38,40"
1833	132° 48' 42,63"	3° 52' 38,16"
1834	132° 48' 2,54"	3° 51' 13,07"
1835	132° 48' 2,56"	3° 51' 13,43"
1836	132° 48' 2,89"	3° 51' 13,50"
1837	132° 47' 52,69"	3° 50' 24,72"
1838	132° 48' 3,02"	3° 51' 13,32"
1839	132° 48' 2,99"	3° 51' 12,96"
1840	132° 47' 51,71"	3° 50' 25,83"
1841	132° 46' 50,81"	3° 49' 9,62"
1842	132° 47' 51,26"	3° 50' 26,75"
1843	132° 47' 52,05"	3° 50' 27,20"
1844	132° 47' 52,52"	3° 50' 26,35"
1845	132° 47' 50,57"	3° 50' 24,74"
1846	132° 47' 51,04"	3° 50' 25,64"
1847	132° 47' 51,37"	3° 50' 23,93"
1848	132° 47' 52,16"	3° 50' 24,01"
1849	132° 47' 52,33"	3° 50' 23,20"
1850	132° 47' 51,56"	3° 50' 23,09"

Nomor Titik Peta	Koordinat	
	Bujur Timur (BT)	Lintang Selatan (LS)
1851	132° 47' 39,53"	3° 49' 57,19"
1852	132° 47' 52,44"	3° 50' 25,34"
1853	132° 47' 38,98"	3° 49' 57,63"
1854	132° 47' 40,35"	3° 49' 57,98"
1855	132° 47' 40,25"	3° 49' 57,05"
1856	132° 46' 43,84"	3° 49' 35,87"
1857	132° 46' 43,14"	3° 49' 37,54"
1858	132° 46' 45,02"	3° 49' 40,19"
1859	132° 46' 51,93"	3° 49' 35,93"
1860	132° 46' 47,18"	3° 49' 37,15"
1861	132° 46' 47,03"	3° 49' 5,57"
1862	132° 46' 46,18"	3° 49' 12,08"
1863	132° 46' 41,86"	3° 49' 26,68"
1864	132° 47' 5,12"	3° 49' 19,41"
1865	132° 47' 0,64"	3° 49' 19,45"
1866	132° 46' 49,19"	3° 49' 11,43"
1867	132° 46' 49,88"	3° 49' 5,05"
1868	132° 47' 3,62"	3° 49' 19,52"
1869	132° 47' 3,55"	3° 49' 19,86"
1870	132° 47' 4,95"	3° 49' 20,13"
1871	132° 47' 0,67"	3° 49' 17,36"
1872	132° 47' 0,46"	3° 49' 18,69"
1873	132° 47' 2,86"	3° 49' 19,55"
1874	132° 47' 2,86"	3° 49' 17,94"
1875	132° 46' 50,56"	3° 49' 10,24"
1876	132° 46' 51,33"	3° 49' 10,52"
1877	132° 46' 51,43"	3° 49' 9,62"
1878	132° 46' 51,82"	3° 49' 9,07"
1879	132° 46' 51,84"	3° 49' 9,54"
1880	132° 46' 52,27"	3° 49' 9,41"
1881	132° 46' 52,10"	3° 49' 9,07"
1882	132° 46' 39,63"	3° 49' 17,24"
1883	132° 46' 39,93"	3° 49' 18,19"
1884	132° 46' 41,39"	3° 49' 18,25"
1885	132° 46' 41,37"	3° 49' 17,10"
1886	132° 46' 40,60"	3° 49' 16,79"
1887	132° 46' 47,09"	3° 49' 1,16"
1888	132° 46' 46,70"	3° 49' 2,04"
1889	132° 46' 46,96"	3° 49' 2,66"
1890	132° 46' 47,81"	3° 49' 2,04"
1891	132° 46' 47,92"	3° 49' 1,23"
1892	132° 47' 7,02"	3° 48' 52,02"

Nomor Titik Peta	Koordinat	
	Bujur Timur (BT)	Lintang Selatan (LS)
1893	132° 47' 7,23"	3° 48' 52,23"
1894	132° 47' 7,67"	3° 48' 51,97"
1895	132° 47' 7,47"	3° 48' 51,78"
1896	132° 47' 7,82"	3° 48' 40,13"
1897	132° 47' 8,36"	3° 48' 41,57"
1898	132° 47' 9,49"	3° 48' 41,84"
1899	132° 47' 9,49"	3° 48' 40,65"
1900	132° 44' 39,52"	3° 42' 23,72"
1901	132° 44' 41,31"	3° 42' 25,18"
1902	132° 44' 41,83"	3° 42' 23,81"
1903	132° 43' 58,62"	3° 40' 28,63"
1904	132° 43' 49,42"	3° 39' 45,64"
1905	132° 44' 41,23"	3° 42' 22,87"
1906	132° 43' 53,66"	3° 40' 33,52"
1907	132° 43' 55,04"	3° 40' 35,06"
1908	132° 43' 56,28"	3° 40' 34,98"
1909	132° 43' 55,84"	3° 40' 33,77"
1910	132° 43' 58,46"	3° 40' 28,97"
1911	132° 43' 58,78"	3° 40' 29,38"
1912	132° 43' 59,21"	3° 40' 29,15"
1913	132° 43' 57,74"	3° 40' 15,50"
1914	132° 43' 59,00"	3° 40' 28,56"
1915	132° 43' 57,30"	3° 40' 15,12"
1916	132° 43' 57,38"	3° 40' 15,76"
1917	132° 43' 57,77"	3° 40' 14,70"
1918	132° 43' 47,10"	3° 39' 43,83"
1919	132° 43' 50,45"	3° 39' 44,10"
1920	132° 49' 18,09"	3° 38' 17,73"
1921	132° 43' 48,57"	3° 39' 42,93"
1922	132° 43' 44,73"	3° 39' 24,04"
1923	132° 43' 47,55"	3° 39' 25,22"
1924	132° 43' 46,92"	3° 39' 23,80"
1925	132° 43' 46,70"	3° 39' 26,15"
1926	132° 43' 45,59"	3° 38' 57,19"
1927	132° 43' 45,52"	3° 38' 57,77"
1928	132° 43' 46,07"	3° 38' 57,67"
1929	132° 43' 45,90"	3° 38' 56,95"
1930	132° 49' 18,39"	3° 38' 17,21"
1931	132° 43' 31,19"	3° 38' 10,12"
1932	132° 43' 31,42"	3° 38' 10,86"
1933	132° 43' 31,91"	3° 38' 10,89"
1934	132° 43' 31,57"	3° 38' 10,15"

Nomor Titik Peta	Koordinat	
	Bujur Timur (BT)	Lintang Selatan (LS)
1935	132° 49' 18,39"	3° 38' 18,11"
1936	132° 49' 18,99"	3° 38' 17,64"
1937	132° 49' 18,99"	3° 38' 17,25"
1938	132° 49' 36,33"	3° 38' 6,98"
1939	132° 49' 35,86"	3° 38' 7,75"
1940	132° 49' 36,72"	3° 38' 9,03"
1941	132° 49' 37,02"	3° 38' 7,83"
1942	132° 49' 36,97"	3° 38' 6,89"
1943	132° 51' 13,98"	3° 38' 26,27"
1944	132° 51' 13,98"	3° 38' 26,61"
1945	132° 51' 14,46"	3° 38' 26,78"
1946	132° 51' 14,49"	3° 38' 26,27"
1947	132° 51' 14,15"	3° 38' 26,16"
1948	132° 56' 15,10"	3° 33' 9,94"
1949	132° 51' 41,15"	3° 38' 39,25"
1950	132° 51' 41,39"	3° 38' 39,84"
1951	132° 51' 41,87"	3° 38' 39,70"
1952	132° 51' 41,63"	3° 38' 39,08"
1953	132° 56' 15,99"	3° 33' 8,60"
1954	132° 56' 21,24"	3° 33' 12,72"
1955	132° 56' 21,68"	3° 33' 10,45"
1956	132° 56' 17,50"	3° 33' 8,09"
1957	132° 53' 39,41"	3° 31' 54,24"
1958	132° 53' 39,04"	3° 31' 55,23"
1959	132° 53' 39,55"	3° 31' 55,74"
1960	132° 53' 40,23"	3° 31' 54,58"
1961	132° 53' 43,90"	3° 31' 53,52"
1962	132° 53' 43,73"	3° 31' 54,51"
1963	132° 53' 48,12"	3° 31' 54,06"
1964	132° 53' 49,52"	3° 31' 51,15"
1965	132° 53' 46,68"	3° 31' 51,63"
1966	132° 53' 50,10"	3° 31' 50,60"
1967	132° 53' 50,55"	3° 31' 51,22"
1968	132° 53' 51,54"	3° 31' 50,95"
1969	132° 53' 51,82"	3° 31' 49,71"
1970	132° 53' 43,56"	3° 31' 3,70"
1971	132° 53' 44,79"	3° 31' 4,52"
1972	132° 53' 45,82"	3° 31' 3,46"
1973	132° 53' 44,52"	3° 31' 2,57"
1974	132° 51' 27,20"	3° 28' 48,60"
1975	132° 51' 26,82"	3° 28' 50,72"
1976	132° 51' 27,30"	3° 28' 51,13"

Nomor Titik Peta	Koordinat	
	Bujur Timur (BT)	Lintang Selatan (LS)
1977	132° 51' 28,53"	3° 28' 50,58"
1978	132° 51' 28,57"	3° 28' 49,18"
1979	132° 47' 52,12"	3° 22' 14,27"
1980	132° 47' 51,44"	3° 22' 15,33"
1981	132° 47' 52,05"	3° 22' 15,94"
1982	132° 47' 53,08"	3° 22' 14,71"
1983	132° 47' 54,30"	3° 21' 19,16"
1984	132° 47' 53,95"	3° 21' 19,42"
1985	132° 48' 2,78"	3° 21' 25,61"
1986	132° 48' 1,94"	3° 21' 23,58"
1987	132° 47' 50,83"	3° 21' 16,37"
1988	132° 47' 51,12"	3° 21' 16,96"
1989	132° 47' 52,87"	3° 21' 17,33"
1990	132° 47' 53,48"	3° 21' 15,87"
1991	132° 47' 52,25"	3° 21' 15,43"
1992	132° 49' 31,70"	3° 19' 49,49"
1993	132° 49' 30,63"	3° 19' 52,08"
1994	132° 49' 31,93"	3° 19' 54,94"
1995	132° 49' 33,27"	3° 19' 51,64"
1996	132° 49' 16,83"	3° 18' 42,22"
1997	132° 49' 16,87"	3° 18' 43,04"
1998	132° 49' 17,74"	3° 18' 42,51"
1999	132° 49' 17,70"	3° 18' 41,59"
2000	132° 49' 18,14"	3° 18' 38,53"
2001	132° 49' 18,10"	3° 18' 39,93"
2002	132° 49' 19,59"	3° 18' 39,34"
2003	132° 49' 19,60"	3° 18' 38,59"
2004	132° 49' 19,02"	3° 18' 38,54"
2005	132° 49' 26,18"	3° 18' 39,75"
2006	132° 49' 26,11"	3° 18' 40,19"
2007	132° 49' 26,18"	3° 18' 40,33"
2008	132° 49' 26,49"	3° 18' 40,12"
2009	132° 49' 26,43"	3° 18' 39,84"
2010	132° 50' 28,89"	3° 17' 53,89"
2011	132° 50' 34,69"	3° 17' 53,36"
2012	132° 50' 33,66"	3° 17' 52,81"
2013	132° 50' 28,33"	3° 17' 55,28"
2014	132° 48' 52,96"	3° 17' 51,56"
2015	132° 48' 52,29"	3° 17' 56,01"
2016	132° 48' 55,47"	3° 17' 55,60"
2017	132° 48' 58,85"	3° 17' 52,78"
2018	132° 48' 59,00"	3° 17' 50,86"

Nomor Titik Peta	Koordinat	
	Bujur Timur (BT)	Lintang Selatan (LS)
2019	132° 48' 56,59"	3° 17' 49,28"
2020	132° 48' 42,49"	3° 18' 13,54"
2021	132° 48' 39,35"	3° 18' 17,47"
2022	132° 48' 45,71"	3° 18' 19,81"
2023	132° 48' 50,07"	3° 18' 16,05"
2024	132° 48' 47,46"	3° 18' 13,35"
2025	132° 48' 42,33"	3° 18' 30,33"
2026	132° 48' 43,34"	3° 18' 30,86"
2027	132° 48' 45,73"	3° 18' 29,94"
2028	132° 48' 45,58"	3° 18' 29,32"
2029	132° 48' 45,01"	3° 18' 29,26"
2030	132° 48' 6,55"	3° 18' 33,80"
2031	132° 48' 6,26"	3° 18' 33,27"
2032	132° 48' 5,74"	3° 18' 33,67"
2033	132° 48' 6,01"	3° 18' 34,19"
2034	132° 48' 7,95"	3° 17' 56,36"
2035	132° 48' 5,16"	3° 18' 30,35"
2036	132° 48' 21,88"	3° 18' 37,17"
2037	132° 48' 37,81"	3° 18' 19,66"
2038	132° 48' 36,61"	3° 18' 6,50"
2039	132° 48' 23,49"	3° 17' 48,75"
2040	132° 48' 22,32"	3° 17' 47,55"
2041	132° 48' 22,57"	3° 17' 47,91"
2042	132° 48' 23,21"	3° 17' 47,53"
2043	132° 48' 22,44"	3° 17' 47,48"
2044	132° 48' 6,42"	3° 17' 53,22"
2045	132° 48' 6,53"	3° 17' 54,89"
2046	132° 48' 7,00"	3° 17' 55,17"
2047	132° 48' 7,45"	3° 17' 53,93"
2048	132° 48' 7,25"	3° 17' 52,97"
2049	132° 47' 50,61"	3° 17' 59,33"
2050	132° 47' 49,99"	3° 18' 1,97"
2051	132° 47' 51,85"	3° 18' 0,72"
2052	132° 47' 51,17"	3° 17' 59,22"
2053	132° 47' 49,50"	3° 17' 52,89"
2054	132° 47' 48,81"	3° 17' 54,15"
2055	132° 47' 49,90"	3° 17' 54,60"
2056	132° 47' 50,91"	3° 17' 53,18"
2057	132° 47' 50,80"	3° 17' 52,76"
2058	132° 47' 54,68"	3° 17' 51,51"
2059	132° 47' 54,51"	3° 17' 51,98"
2060	132° 47' 55,24"	3° 17' 52,01"

Nomor Titik Peta	Koordinat	
	Bujur Timur (BT)	Lintang Selatan (LS)
2061	132° 47' 55,15"	3° 17' 51,37"
2062	132° 47' 59,61"	3° 17' 44,82"
2063	132° 48' 0,26"	3° 17' 46,29"
2064	132° 48' 3,17"	3° 17' 48,08"
2065	132° 48' 3,82"	3° 17' 43,52"
2066	132° 48' 2,66"	3° 17' 43,28"
2067	132° 48' 4,37"	3° 17' 42,80"
2068	132° 48' 7,04"	3° 17' 44,75"
2069	132° 48' 7,76"	3° 17' 43,62"
2070	132° 48' 6,32"	3° 17' 41,67"
2071	132° 47' 50,49"	3° 17' 44,68"
2072	132° 47' 49,84"	3° 17' 46,33"
2073	132° 47' 51,07"	3° 17' 46,33"
2074	132° 47' 51,07"	3° 17' 45,33"
2075	132° 47' 50,63"	3° 17' 40,88"
2076	132° 47' 49,81"	3° 17' 42,35"
2077	132° 47' 50,49"	3° 17' 42,53"
2078	132° 47' 51,62"	3° 17' 41,67"
2079	132° 47' 58,39"	3° 16' 55,35"
2080	132° 47' 58,63"	3° 16' 55,61"
2081	132° 47' 59,03"	3° 16' 55,32"
2082	132° 47' 58,97"	3° 16' 55,08"
2083	132° 47' 58,27"	3° 15' 54,83"
2084	132° 47' 59,61"	3° 15' 58,23"
2085	132° 48' 1,36"	3° 15' 55,76"
2086	132° 47' 59,11"	3° 15' 54,41"
2087	132° 47' 58,19"	3° 15' 56,70"
2088	132° 47' 25,30"	3° 16' 46,52"
2089	132° 47' 24,11"	3° 16' 50,91"
2090	132° 47' 25,77"	3° 16' 50,96"
2091	132° 47' 29,27"	3° 16' 47,41"
2092	132° 47' 27,11"	3° 16' 45,65"
2093	132° 47' 21,18"	3° 16' 42,65"
2094	132° 47' 21,06"	3° 16' 44,35"
2095	132° 47' 22,22"	3° 16' 45,36"
2096	132° 47' 24,53"	3° 16' 45,20"
2097	132° 47' 24,22"	3° 16' 44,06"
2098	132° 47' 22,23"	3° 16' 42,58"
2099	132° 47' 15,53"	3° 16' 42,18"
2100	132° 47' 15,78"	3° 16' 45,09"
2101	132° 47' 16,74"	3° 16' 44,97"
2102	132° 47' 17,23"	3° 16' 41,57"

Nomor Titik Peta	Koordinat	
	Bujur Timur (BT)	Lintang Selatan (LS)
2103	132° 46' 45,14"	3° 17' 10,39"
2104	132° 46' 45,17"	3° 17' 10,89"
2105	132° 46' 45,59"	3° 17' 10,75"
2106	132° 46' 45,55"	3° 17' 10,53"
2107	132° 46' 45,28"	3° 17' 10,31"
2108	132° 46' 42,33"	3° 17' 6,16"
2109	132° 46' 42,21"	3° 17' 6,47"
2110	132° 46' 42,45"	3° 17' 6,69"
2111	132° 46' 43,08"	3° 17' 6,62"
2112	132° 46' 43,21"	3° 17' 6,26"
2113	132° 46' 42,93"	3° 17' 6,01"
2114	132° 46' 34,20"	3° 16' 37,24"
2115	132° 46' 34,16"	3° 16' 37,69"
2116	132° 46' 35,14"	3° 16' 38,21"
2117	132° 46' 35,40"	3° 16' 37,65"
2118	132° 46' 34,77"	3° 16' 37,08"
2119	132° 46' 1,84"	3° 15' 56,27"
2120	132° 46' 1,60"	3° 15' 56,61"
2121	132° 46' 1,67"	3° 15' 56,89"
2122	132° 46' 2,01"	3° 15' 56,96"
2123	132° 46' 2,15"	3° 15' 56,78"
2124	132° 46' 2,15"	3° 15' 56,34"
2125	132° 45' 44,02"	3° 15' 52,98"
2126	132° 45' 43,89"	3° 15' 56,00"
2127	132° 45' 45,19"	3° 15' 55,00"
2128	132° 45' 45,60"	3° 15' 53,19"
2129	132° 45' 44,88"	3° 15' 52,16"
2130	132° 45' 46,43"	3° 15' 54,03"
2131	132° 45' 46,39"	3° 15' 54,68"
2132	132° 45' 46,59"	3° 15' 54,66"
2133	132° 45' 46,58"	3° 15' 54,00"
2134	132° 45' 45,27"	3° 15' 56,44"
2135	132° 45' 45,09"	3° 15' 57,17"
2136	132° 45' 45,21"	3° 15' 57,38"
2137	132° 45' 45,54"	3° 15' 57,24"
2138	132° 45' 45,59"	3° 15' 56,50"
2139	132° 45' 45,92"	3° 15' 58,77"
2140	132° 45' 46,11"	3° 15' 59,39"
2141	132° 45' 46,82"	3° 15' 59,53"
2142	132° 45' 47,04"	3° 15' 58,78"
2143	132° 45' 43,45"	3° 16' 5,92"
2144	132° 45' 44,90"	3° 16' 6,42"

Nomor Titik Peta	Koordinat	
	Bujur Timur (BT)	Lintang Selatan (LS)
2145	132° 45' 46,87"	3° 16' 5,50"
2146	132° 45' 46,90"	3° 16' 4,96"
2147	132° 45' 43,95"	3° 16' 5,01"
2148	132° 45' 17,03"	3° 16' 25,42"
2149	132° 45' 16,92"	3° 16' 25,63"
2150	132° 45' 17,35"	3° 16' 25,78"
2151	132° 45' 17,39"	3° 16' 25,33"
2152	132° 43' 58,47"	3° 18' 2,51"
2153	132° 45' 13,96"	3° 16' 28,39"
2154	132° 45' 14,20"	3° 16' 28,69"
2155	132° 45' 14,56"	3° 16' 28,65"
2156	132° 45' 14,50"	3° 16' 28,33"
2157	132° 41' 49,74"	3° 19' 48,83"
2158	132° 45' 14,20"	3° 16' 28,29"
2159	132° 45' 11,61"	3° 16' 27,32"
2160	132° 45' 10,99"	3° 16' 28,29"
2161	132° 45' 11,54"	3° 16' 28,59"
2162	132° 43' 58,39"	3° 18' 3,51"
2163	132° 43' 59,24"	3° 18' 3,56"
2164	132° 44' 0,10"	3° 18' 2,77"
2165	132° 44' 0,04"	3° 18' 2,51"
2166	132° 43' 53,13"	3° 19' 22,60"
2167	132° 43' 53,15"	3° 19' 22,75"
2168	132° 45' 12,49"	3° 16' 27,88"
2169	132° 43' 53,44"	3° 19' 22,83"
2170	132° 43' 53,59"	3° 19' 22,74"
2171	132° 43' 53,43"	3° 19' 22,56"
2172	132° 41' 57,15"	3° 19' 54,28"
2173	132° 41' 57,25"	3° 19' 54,55"
2174	132° 41' 53,19"	3° 19' 53,23"
2175	132° 41' 57,56"	3° 19' 54,48"
2176	132° 41' 57,62"	3° 19' 54,04"
2177	132° 41' 50,19"	3° 19' 52,29"
2178	132° 41' 50,53"	3° 19' 53,00"
2179	132° 41' 50,44"	3° 19' 49,43"
2180	132° 41' 53,44"	3° 19' 52,91"
2181	132° 41' 51,75"	3° 19' 51,86"
2182	132° 41' 50,32"	3° 19' 49,53"
2183	132° 41' 50,48"	3° 19' 49,84"
2184	132° 41' 50,93"	3° 19' 49,81"
2185	132° 41' 50,93"	3° 19' 49,65"
2186	132° 41' 48,23"	3° 19' 49,10"

Nomor Titik Peta	Koordinat	
	Bujur Timur (BT)	Lintang Selatan (LS)
2187	132° 41' 48,66"	3° 19' 49,88"
2188	132° 41' 49,50"	3° 19' 49,93"
2189	132° 41' 49,98"	3° 19' 49,58"
2190	132° 41' 48,47"	3° 19' 48,82"
2191	132° 41' 1,28"	3° 19' 32,21"
2192	132° 41' 1,87"	3° 19' 33,43"
2193	132° 41' 3,00"	3° 19' 32,87"
2194	132° 41' 2,50"	3° 19' 31,83"
2195	132° 40' 21,40"	3° 19' 18,17"
2196	132° 40' 24,01"	3° 19' 19,61"
2197	132° 40' 24,80"	3° 19' 18,48"
2198	132° 40' 24,05"	3° 19' 17,69"
2199	132° 40' 22,41"	3° 19' 17,49"
2200	132° 40' 12,16"	3° 19' 6,35"
2201	132° 40' 12,62"	3° 19' 7,63"
2202	132° 40' 13,67"	3° 19' 7,58"
2203	132° 40' 13,21"	3° 19' 6,39"
2204	132° 40' 0,36"	3° 19' 5,39"
2205	132° 40' 1,24"	3° 19' 6,16"
2206	132° 40' 2,08"	3° 19' 5,70"
2207	132° 40' 1,34"	3° 19' 4,39"
2208	132° 40' 2,03"	3° 19' 4,57"
2209	132° 37' 44,63"	3° 25' 9,73"
2210	132° 37' 44,68"	3° 25' 11,27"
2211	132° 37' 45,54"	3° 25' 11,32"
2212	132° 37' 45,40"	3° 25' 9,16"
2213	132° 37' 46,33"	3° 25' 14,84"
2214	132° 37' 48,38"	3° 25' 18,82"
2215	132° 37' 48,64"	3° 25' 18,77"
2216	132° 37' 48,95"	3° 25' 17,77"
2217	132° 40' 21,65"	3° 28' 24,47"
2218	132° 37' 47,48"	3° 25' 14,99"
2219	132° 41' 36,54"	3° 30' 40,45"
2220	132° 40' 23,50"	3° 28' 18,88"
2221	132° 40' 23,36"	3° 28' 19,32"
2222	132° 40' 24,29"	3° 28' 19,43"
2223	132° 40' 24,84"	3° 28' 18,47"
2224	132° 40' 24,02"	3° 28' 18,54"
2225	132° 40' 21,72"	3° 28' 27,31"
2226	132° 40' 26,14"	3° 28' 24,88"
2227	132° 41' 36,95"	3° 30' 41,74"
2228	132° 40' 26,72"	3° 28' 23,33"

Nomor Titik Peta	Koordinat	
	Bujur Timur (BT)	Lintang Selatan (LS)
2229	132° 40' 24,84"	3° 28' 22,68"
2230	132° 40' 21,24"	3° 28' 26,21"
2231	132° 41' 35,71"	3° 30' 41,48"
2232	132° 41' 37,87"	3° 30' 40,96"
2233	132° 41' 37,90"	3° 30' 40,47"
2234	132° 41' 50,64"	3° 30' 47,64"
2235	132° 41' 50,59"	3° 30' 47,90"
2236	132° 41' 50,80"	3° 30' 48,70"
2237	132° 41' 51,42"	3° 30' 48,29"
2238	132° 41' 50,82"	3° 30' 47,57"
2239	132° 41' 16,22"	3° 26' 31,73"
2240	132° 41' 16,17"	3° 26' 32,24"
2241	132° 41' 17,20"	3° 26' 31,90"
2242	132° 41' 16,99"	3° 26' 31,60"
2243	132° 41' 2,88"	3° 26' 9,01"
2244	132° 41' 3,19"	3° 26' 10,18"
2245	132° 41' 4,18"	3° 26' 10,56"
2246	132° 41' 4,94"	3° 26' 9,01"
2247	132° 41' 4,49"	3° 26' 7,71"

Titik Koordinat Batas Zona Lainnya
Subzona Kerakera

Nomor Titik Peta	Koordinat	
	Bujur Timur (BT)	Lintang Selatan (LS)
1349	132° 54' 38,93"	3° 32' 39,54"
1350	132° 54' 45,89"	3° 32' 38,79"
1351	132° 54' 51,27"	3° 32' 30,59"
1352	132° 54' 38,42"	3° 32' 17,00"
1353	132° 54' 41,85"	3° 32' 15,24"
1354	132° 55' 3,91"	3° 32' 30,52"
1355	132° 55' 28,11"	3° 32' 16,25"
1356	132° 55' 30,18"	3° 31' 56,98"
1357	132° 55' 18,31"	3° 31' 30,10"
1358	132° 55' 9,37"	3° 31' 36,04"
1359	132° 55' 5,73"	3° 31' 51,79"
1360	132° 54' 53,14"	3° 31' 51,74"
1361	132° 54' 41,31"	3° 32' 0,18"
1362	132° 54' 34,47"	3° 31' 50,87"
1363	132° 54' 35,83"	3° 31' 49,32"
1364	132° 54' 34,98"	3° 31' 47,97"
1365	132° 54' 31,12"	3° 31' 51,03"
1366	132° 54' 26,21"	3° 31' 48,72"

Nomor Titik Peta	Koordinat	
	Bujur Timur (BT)	Lintang Selatan (LS)
1367	132° 54' 27,50"	3° 31' 48,28"
1368	132° 54' 27,81"	3° 31' 44,38"
1369	132° 54' 20,06"	3° 31' 41,18"
1370	132° 54' 19,56"	3° 31' 43,13"
1371	132° 54' 17,90"	3° 31' 42,28"
1372	132° 54' 15,45"	3° 31' 36,64"
1373	132° 54' 25,08"	3° 31' 14,22"
1374	132° 54' 9,79"	3° 31' 6,04"
1375	132° 54' 8,51"	3° 31' 11,04"
1376	132° 54' 16,89"	3° 31' 19,31"
1377	132° 54' 8,46"	3° 31' 40,25"
1378	132° 54' 10,07"	3° 31' 45,82"
1379	132° 54' 2,30"	3° 31' 15,99"
1380	132° 54' 5,37"	3° 31' 12,90"
1381	132° 53' 56,21"	3° 31' 2,82"
1382	132° 53' 50,72"	3° 31' 8,52"
1383	132° 53' 43,04"	3° 30' 34,92"
1384	132° 53' 39,67"	3° 30' 23,86"
1385	132° 53' 21,81"	3° 30' 9,99"
1386	132° 53' 22,18"	3° 30' 3,08"
1387	132° 53' 30,59"	3° 29' 53,70"
1388	132° 53' 31,36"	3° 29' 45,99"
1459	132° 48' 49,09"	3° 23' 49,75"
1460	132° 48' 52,61"	3° 23' 49,27"
1461	132° 48' 54,11"	3° 23' 37,89"
1462	132° 48' 46,93"	3° 23' 17,39"
1463	132° 48' 38,68"	3° 23' 9,00"
1464	132° 48' 45,41"	3° 23' 5,50"
1465	132° 48' 31,47"	3° 22' 49,39"
1466	132° 48' 25,75"	3° 22' 56,53"
1467	132° 48' 5,38"	3° 22' 20,00"
1468	132° 48' 10,60"	3° 22' 23,28"
1469	132° 48' 25,23"	3° 22' 14,83"
1470	132° 48' 7,09"	3° 22' 3,03"
1471	132° 48' 1,46"	3° 21' 41,75"
1472	132° 48' 16,11"	3° 21' 36,26"
1473	132° 48' 9,18"	3° 21' 30,24"
1474	132° 47' 59,05"	3° 21' 36,75"
1475	132° 48' 23,47"	3° 20' 50,89"
1476	132° 48' 25,51"	3° 20' 52,90"
1477	132° 48' 50,34"	3° 20' 48,69"
1478	132° 48' 59,50"	3° 20' 41,39"

Nomor Titik Peta	Koordinat	
	Bujur Timur (BT)	Lintang Selatan (LS)
1479	132° 49' 7,77"	3° 20' 15,16"
1480	132° 49' 4,81"	3° 20' 4,63"
1481	132° 49' 2,53"	3° 20' 5,21"
1482	132° 49' 26,74"	3° 19' 46,01"
1483	132° 49' 12,03"	3° 20' 1,45"
1484	132° 49' 35,59"	3° 20' 15,70"
1485	132° 49' 55,20"	3° 20' 0,93"
1486	132° 49' 39,58"	3° 19' 53,22"
1487	132° 49' 52,06"	3° 19' 36,69"
1488	132° 49' 47,79"	3° 19' 20,62"
1489	132° 50' 12,45"	3° 18' 38,16"
1490	132° 50' 32,72"	3° 18' 30,00"
1491	132° 50' 39,41"	3° 18' 17,92"
1492	132° 50' 35,32"	3° 18' 10,84"
1493	132° 50' 45,22"	3° 17' 55,38"
1494	132° 50' 58,40"	3° 18' 8,12"
1495	132° 51' 9,51"	3° 17' 53,19"
1496	132° 50' 50,22"	3° 17' 33,61"
1497	132° 50' 39,17"	3° 17' 51,81"
1498	132° 50' 32,43"	3° 17' 48,89"
1499	132° 50' 33,17"	3° 17' 52,09"
1500	132° 50' 23,30"	3° 17' 53,19"
1501	132° 50' 23,95"	3° 17' 49,08"
1502	132° 50' 20,87"	3° 17' 46,14"
1503	132° 50' 21,01"	3° 17' 51,48"
1504	132° 50' 9,24"	3° 17' 50,91"
1505	132° 49' 52,89"	3° 17' 56,52"
1506	132° 49' 52,61"	3° 17' 58,90"
1507	132° 50' 8,94"	3° 17' 58,74"
1508	132° 50' 8,49"	3° 18' 5,47"
1509	132° 49' 49,57"	3° 18' 5,72"
1510	132° 49' 48,30"	3° 18' 2,60"
1511	132° 49' 41,57"	3° 17' 58,29"
1512	132° 49' 39,25"	3° 18' 0,06"
1513	132° 49' 31,30"	3° 17' 59,44"
1514	132° 49' 29,04"	3° 17' 55,25"
1515	132° 49' 26,70"	3° 17' 57,64"
1516	132° 49' 27,37"	3° 18' 4,85"
1517	132° 49' 22,46"	3° 18' 3,83"
1518	132° 49' 27,42"	3° 17' 44,75"
1519	132° 49' 6,52"	3° 17' 26,40"
1520	132° 49' 7,19"	3° 17' 20,26"

Nomor Titik Peta	Koordinat	
	Bujur Timur (BT)	Lintang Selatan (LS)
1521	132° 48' 49,32"	3° 17' 7,84"
1522	132° 48' 46,19"	3° 17' 10,57"
1523	132° 48' 53,46"	3° 17' 25,14"
1524	132° 49' 0,29"	3° 17' 29,98"
1525	132° 48' 58,44"	3° 17' 39,72"
1526	132° 48' 51,60"	3° 17' 34,37"
1527	132° 48' 51,09"	3° 17' 27,45"
1528	132° 48' 41,08"	3° 17' 23,74"
1529	132° 48' 38,51"	3° 17' 26,69"
1530	132° 48' 48,09"	3° 17' 36,76"
1531	132° 48' 21,16"	3° 17' 20,18"
1532	132° 48' 31,84"	3° 17' 22,84"
1533	132° 48' 31,58"	3° 17' 18,61"
1534	132° 48' 21,84"	3° 17' 18,22"
1535	132° 48' 10,97"	3° 17' 0,34"
1536	132° 48' 11,75"	3° 16' 58,84"
1537	132° 48' 9,01"	3° 16' 54,52"
1538	132° 48' 6,02"	3° 16' 55,96"
1539	132° 48' 0,06"	3° 16' 53,56"
1540	132° 47' 49,65"	3° 16' 53,56"
1638	132° 45' 16,76"	3° 21' 1,94"
1639	132° 45' 43,19"	3° 19' 46,58"
1640	132° 47' 49,56"	3° 16' 47,61"
2248	132° 46' 58,92"	3° 21' 36,00"
2249	132° 48' 6,45"	3° 26' 16,86"
2250	132° 49' 12,56"	3° 26' 0,96"
2251	132° 51' 0,05"	3° 29' 45,99"
2252	132° 51' 0,05"	3° 32' 39,45"

MENTERI KELAUTAN DAN PERIKANAN
REPUBLIK INDONESIA,

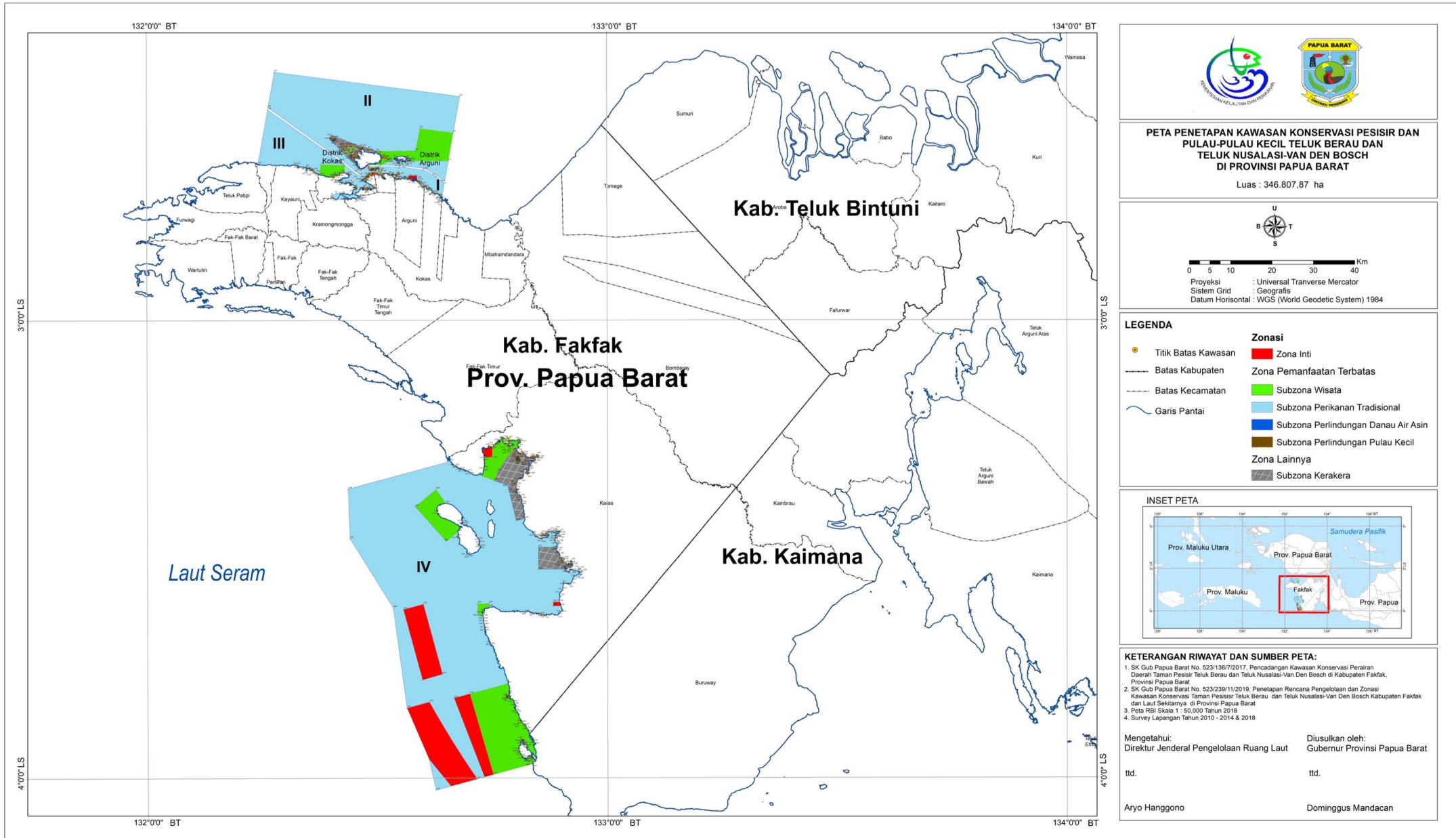
ttd.

EDHY PRABOWO

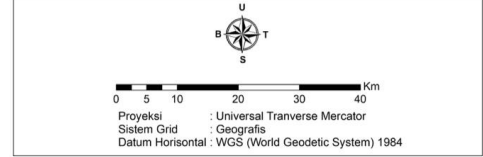
Salinan sesuai dengan aslinya
Kepala Biro Hukum dan Organisasi


Tini Marjani


PETA KAWASAN KONSERVASI PESISIR DAN PULAU-PULAU KECIL TELUK BERAU DAN TELUK NUSALASI-VAN DEN BOSCH
DI PROVINSI PAPUA BARAT



PETA PENETAPAN KAWASAN KONSERVASI PESISIR DAN PULAU-PULAU KECIL TELUK BERAU DAN TELUK NUSALASI-VAN DEN BOSCH DI PROVINSI PAPUA BARAT
Luas : 346.807,87 ha



LEGENDA

● Titik Batas Kawasan	 Zona Inti
----- Batas Kabupaten	 Zona Pemanfaatan Terbatas
----- Batas Kecamatan	 Subzona Wisata
~~~ Garis Pantai	<span style="display:inline-block; width:10px; height:10px; background-color:lightblue; border:1px solid black;"></span> Subzona Perikanan Tradisional
	<span style="display:inline-block; width:10px; height:10px; background-color:darkblue; border:1px solid black;"></span> Subzona Perlindungan Danau Air Asin
	<span style="display:inline-block; width:10px; height:10px; background-color:brown; border:1px solid black;"></span> Subzona Perlindungan Pulau Kecil
	<span style="display:inline-block; width:10px; height:10px; background-color:grey; border:1px solid black;"></span> Zona Lainnya
	<span style="display:inline-block; width:10px; height:10px; background: repeating-linear-gradient(45deg, transparent, transparent 2px, black 2px, black 4px); border:1px solid black;"></span> Subzona Kerakera

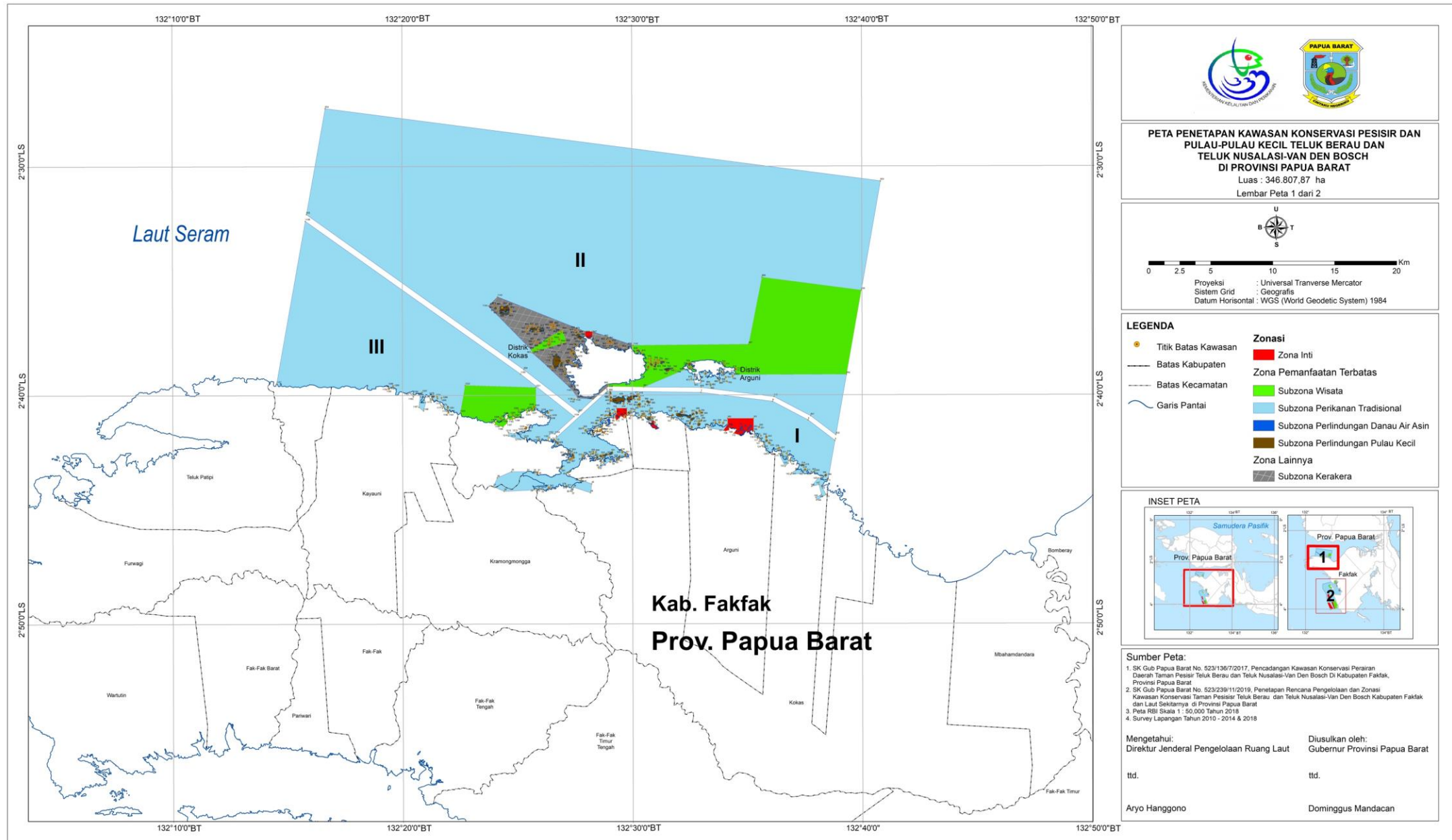


- KETERANGAN RIWAYAT DAN SUMBER PETA:**
- SK Gub Papua Barat No. 523/1367/2017, Pencadangan Kawasan Konservasi Perairan Daerah Taman Pesisir Teluk Berau dan Teluk Nusalasi-Van Den Bosch di Kabupaten Fakfak, Provinsi Papua Barat
  - SK Gub Papua Barat No. 523/239/11/2019, Penetapan Rencana Pengelolaan dan Zonasi Kawasan Konservasi Taman Pesisir Teluk Berau dan Teluk Nusalasi-Van Den Bosch Kabupaten Fakfak dan Laut Sekitarnya di Provinsi Papua Barat
  - Peta RBI Skala 1 : 50.000 Tahun 2018
  - Survey Lapangan Tahun 2010 - 2014 & 2018

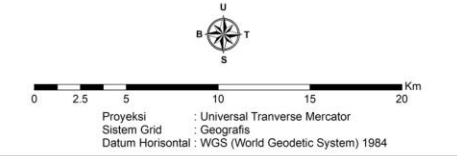
Mengetahui: Direktur Jenderal Pengelolaan Ruang Laut  
Diusulkan oleh: Gubernur Provinsi Papua Barat  
ttt. ttd.  
Aryo Hanggono Dominggus Mandacan



PETA KAWASAN KONSERVASI PESISIR DAN PULAU-PULAU KECIL TELUK BERAU DAN TELUK NUSALASI-VAN DEN BOSCH  
DI PROVINSI PAPUA BARAT

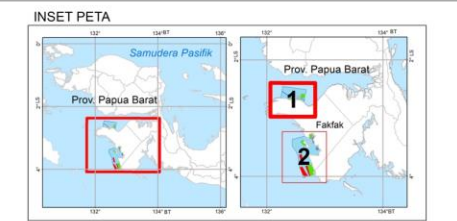


**PETA PENETAPAN KAWASAN KONSERVASI PESISIR DAN PULAU-PULAU KECIL TELUK BERAU DAN TELUK NUSALASI-VAN DEN BOSCH DI PROVINSI PAPUA BARAT**  
Luas : 346.807,87 ha  
Lembar Peta 1 dari 2



**LEGENDA**

● Titik Batas Kawasan	<b>Zonasi</b>
— Batas Kabupaten	■ Zona Inti
— Batas Kecamatan	■ Zona Pemanfaatan Terbatas
~ Garis Pantai	■ Subzona Wisata
	■ Subzona Perikanan Tradisional
	■ Subzona Perlindungan Danau Air Asin
	■ Subzona Perlindungan Pulau Kecil
	■ Zona Lainnya
	■ Subzona Kerakera

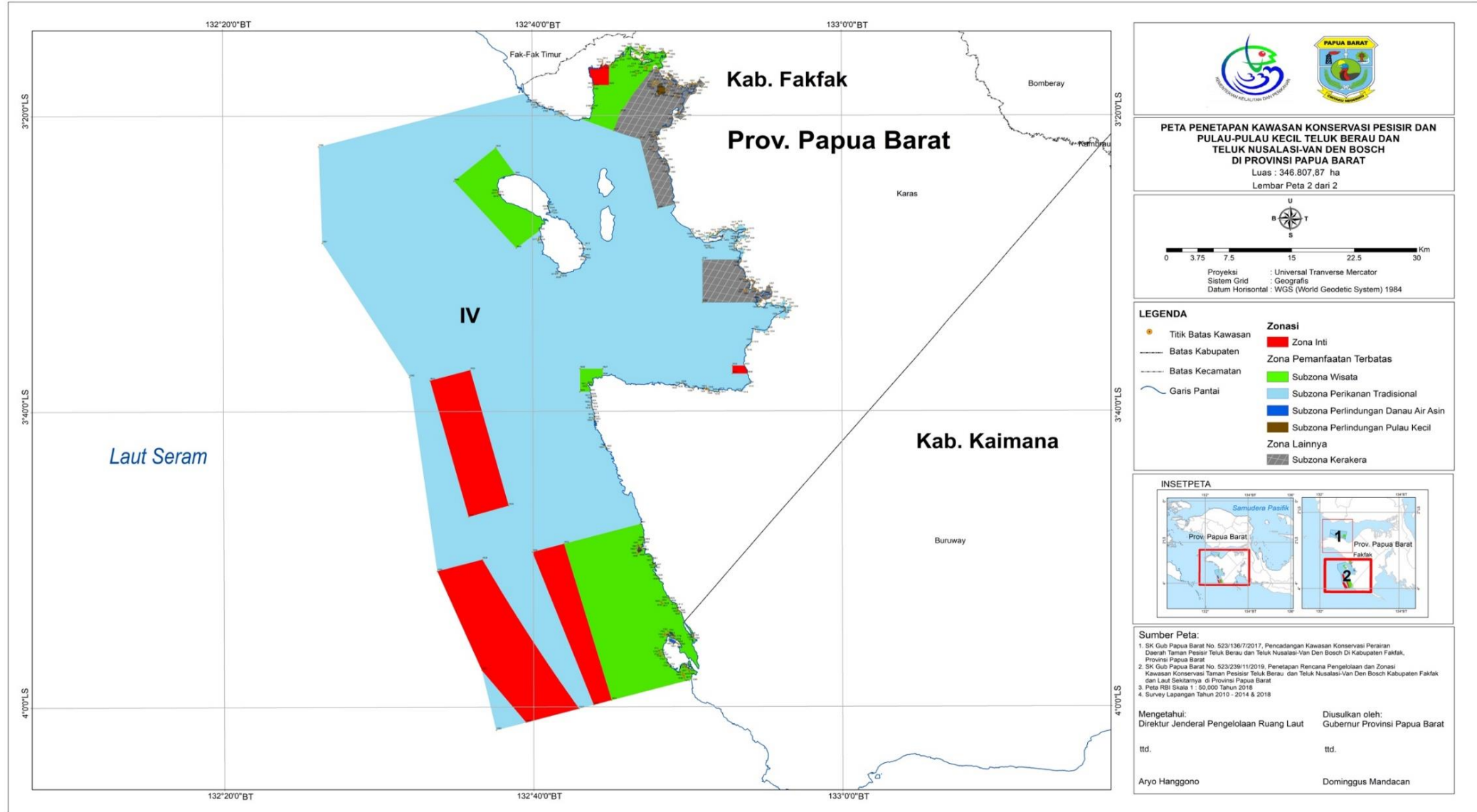


**Sumber Peta:**  
1. SK Gub Papua Barat No. 523/136/7/2017, Pencadangan Kawasan Konservasi Perairan Daerah Taman Pesisir Teluk Berau dan Teluk Nusalasi-Van Den Bosch Di Kabupaten Fakfak, Provinsi Papua Barat  
2. SK Gub Papua Barat No. 523/239/11/2019, Penetapan Rencana Pengelolaan dan Zonasi Kawasan Konservasi Taman Pesisir Teluk Berau dan Teluk Nusalasi-Van Den Bosch Kabupaten Fakfak dan Laut Sekitarnya di Provinsi Papua Barat  
3. Peta RBI Skala 1 : 50.000 Tahun 2018  
4. Survey Lapangan Tahun 2010 - 2014 & 2018

Mengetahui:  
Direktur Jenderal Pengelolaan Ruang Laut  
ttd.  
Aryo Hanggono

Diusulkan oleh:  
Gubernur Provinsi Papua Barat  
ttd.  
Dominggus Mandacan

PETA KAWASAN KONSERVASI PESISIR DAN PULAU-PULAU KECIL TELUK BERAU DAN TELUK NUSALASI-VAN DEN BOSCH DI PROVINSI PAPUA BARAT



Salinan sesuai dengan aslinya  
Kepala Biro Hukum dan Organisasi

Tini Marani

MENTERI KELAUTAN DAN PERIKANAN  
REPUBLIK INDONESIA,

ttd.

EDHY PRABOWO